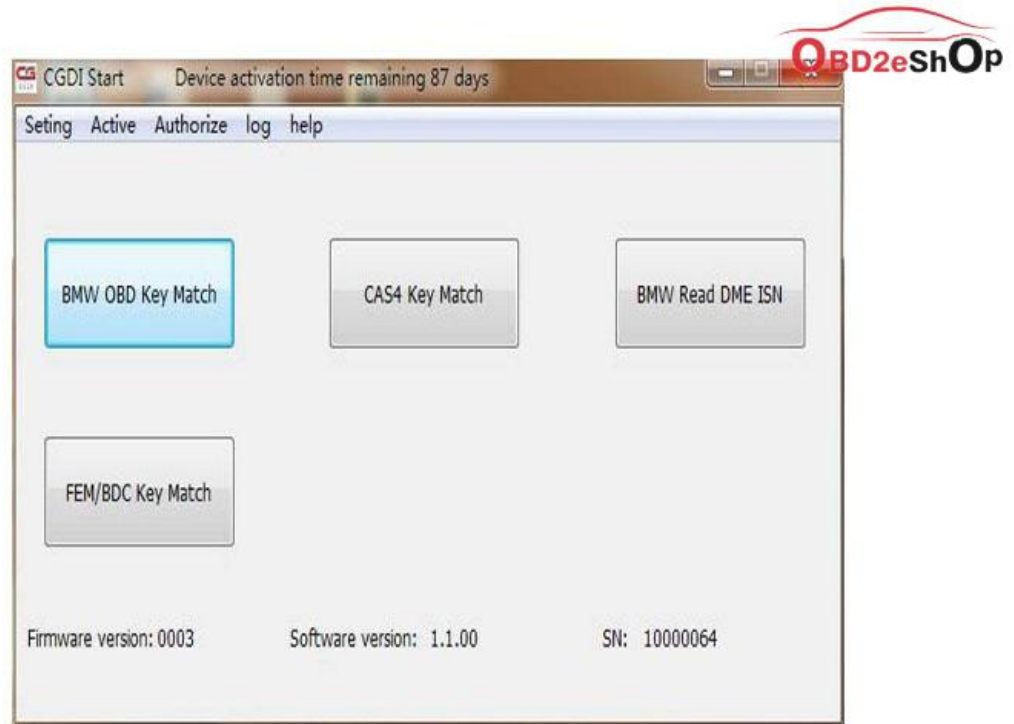


How to update CGDI Prog Firmware:

Step 1. Plug CGDI Pro device into the computer, launch the CGDI software.

Firmware

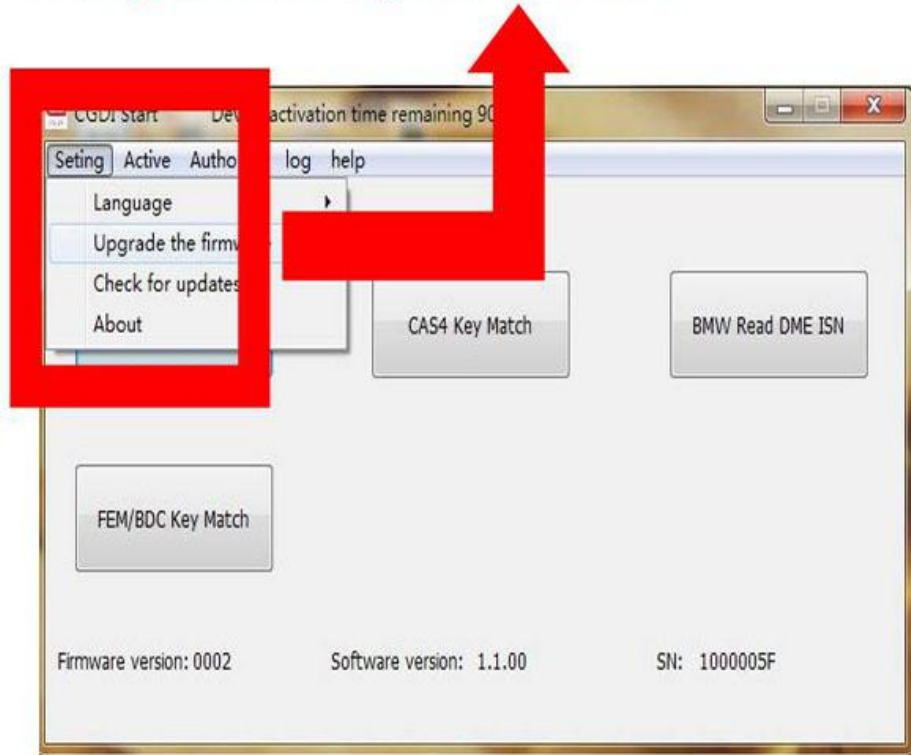


connect devices, open CGDI software

Step 2. Select "Setting" and then "Upgrade the firmware", waiting.

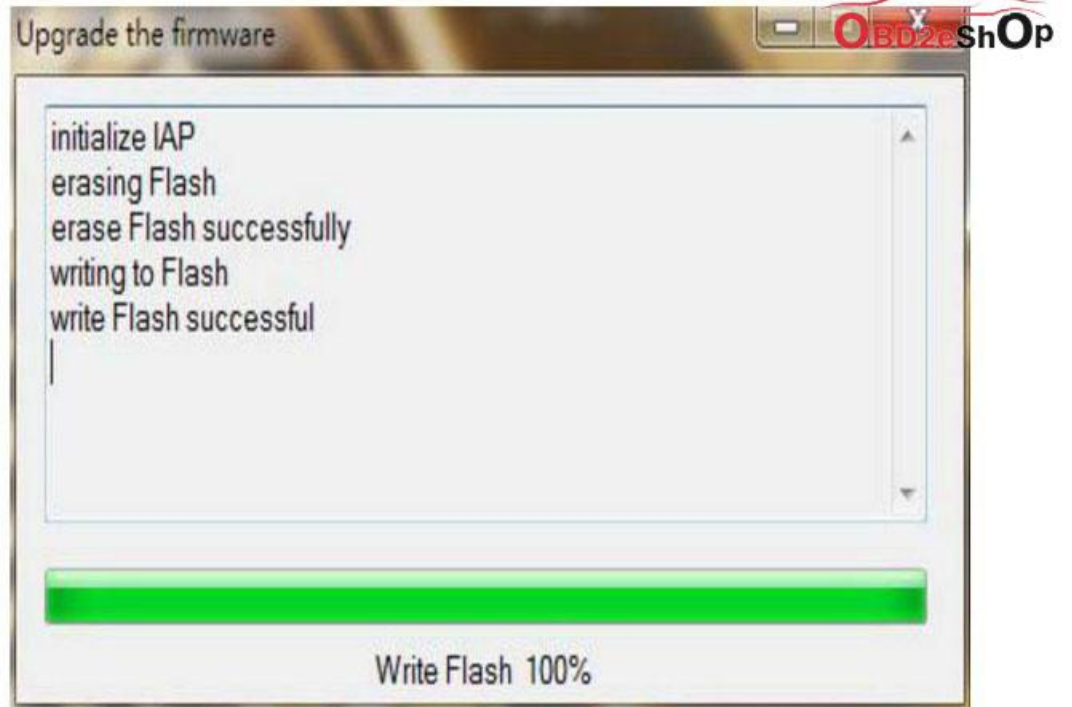
Firmware select "Seting", click "Upgrade the firmware" 

waitting for entering next interface



Step 3. Updating...

Firmware

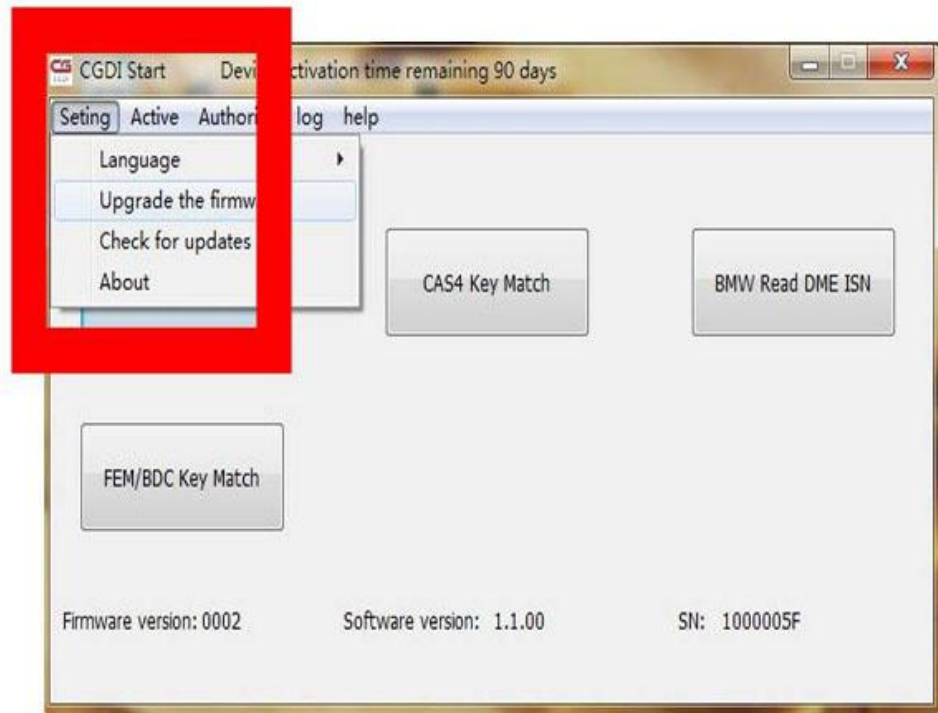


Firmware is upgrading, please do not optional operation ! ! !

Step 4. CGDI programmer firmware update succeed, select “Upgrade the firmware”.

Firmware

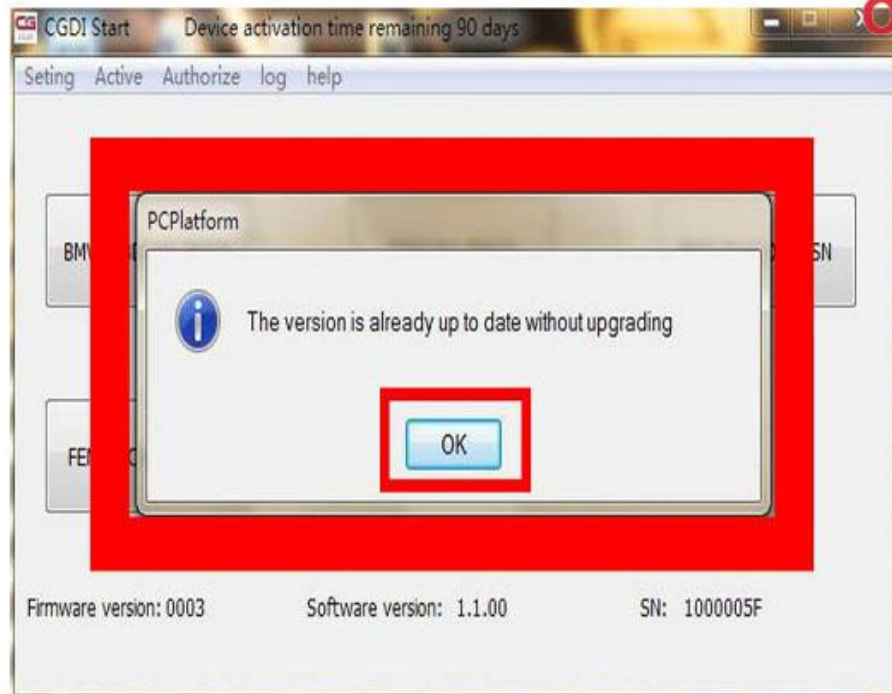
After Firmware updated successfully 
click again “Upgrade the firmware”



Step 5. It pops up " The version is already up to date without upgrading".

Select "OK".

Firmware



show "The version is already up to date without upgrading"
show: firmware updated successfully, can be working normally

Done