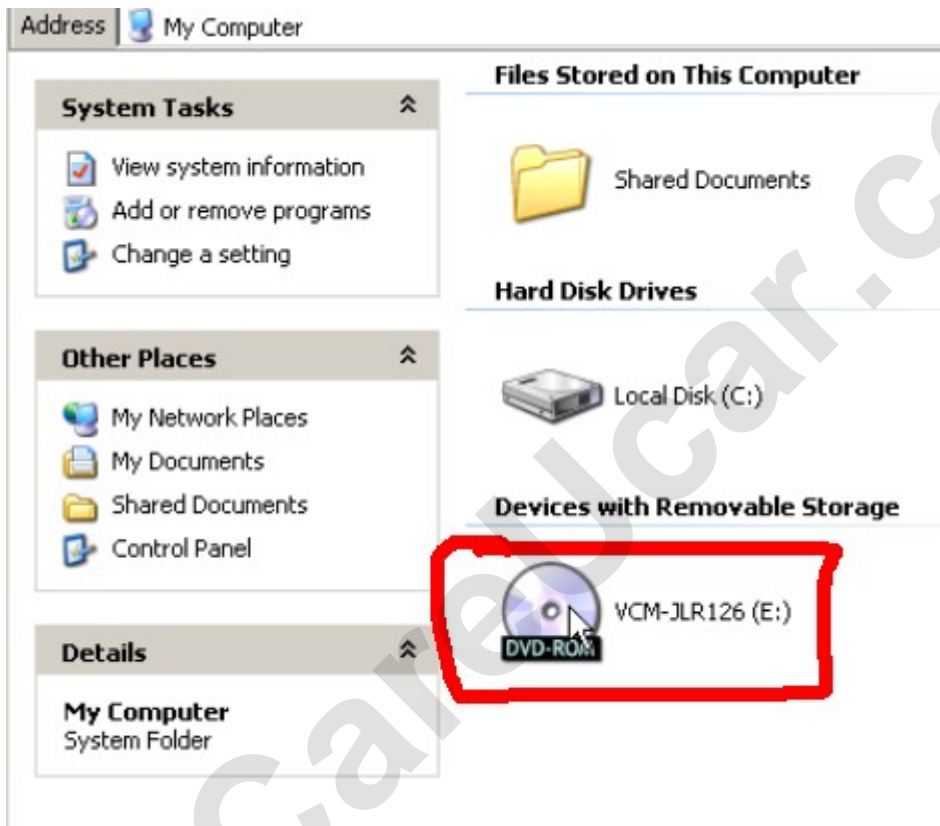
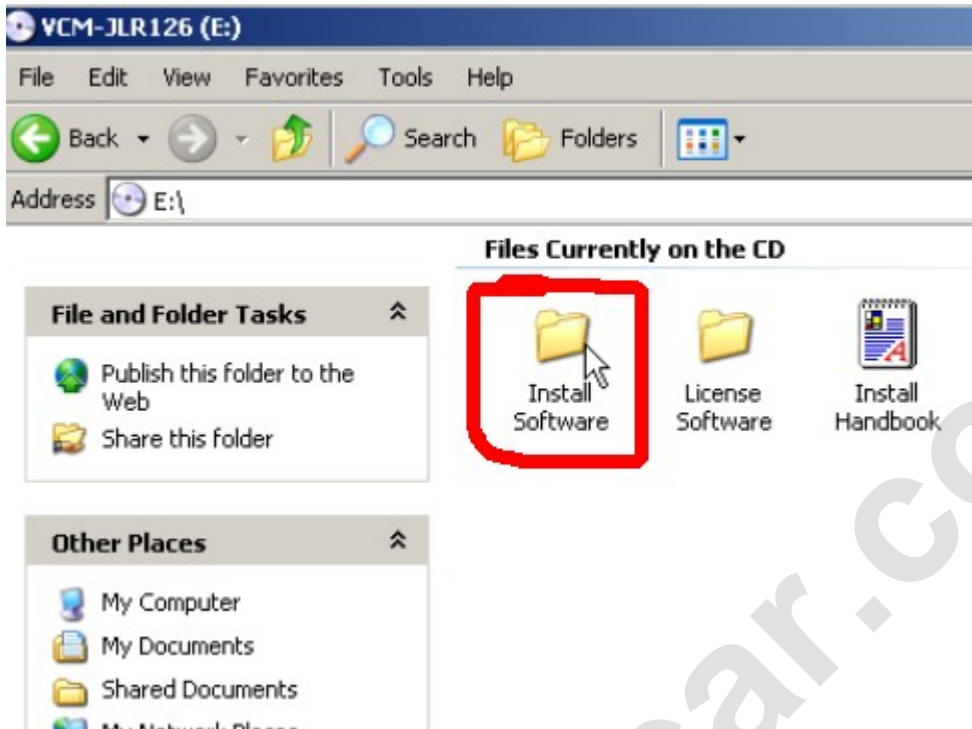


Ford VCM V126 Jaguar Land Rover software setup instruction

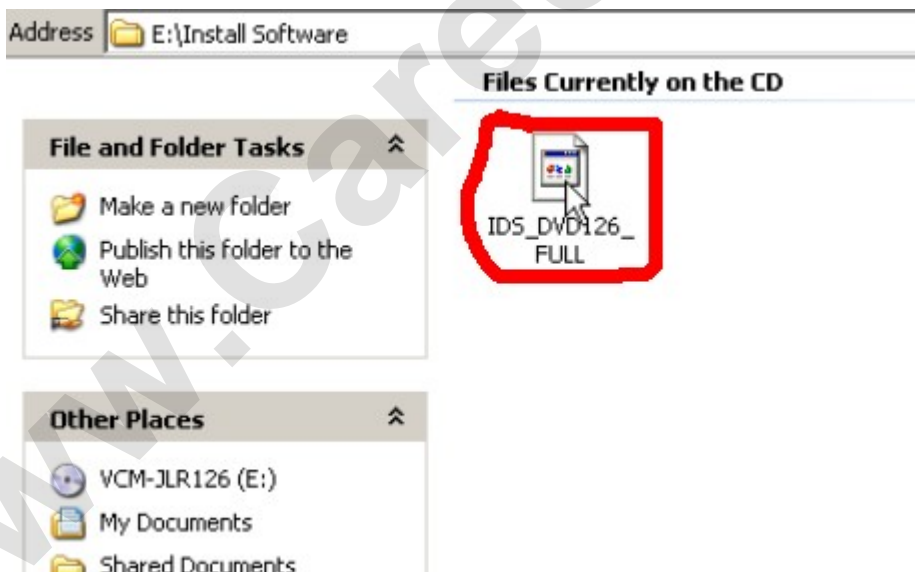
1, Open VCM-JLR126DVD



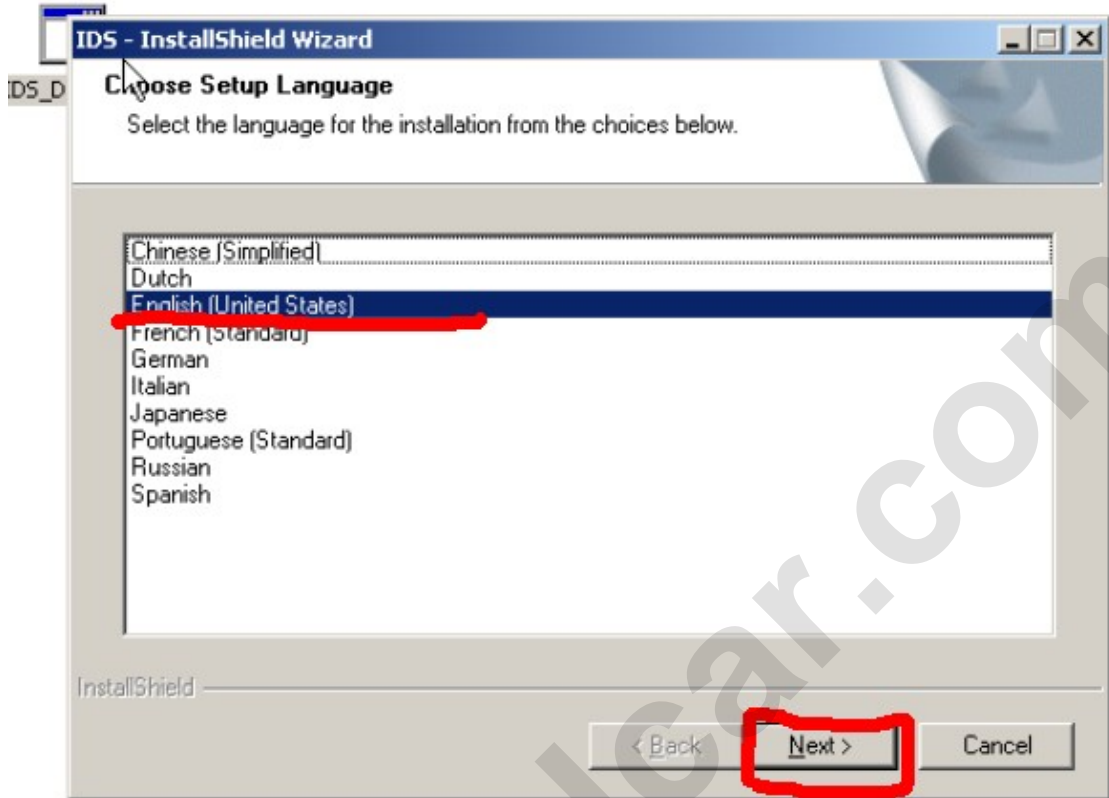
2, click "Install Software"



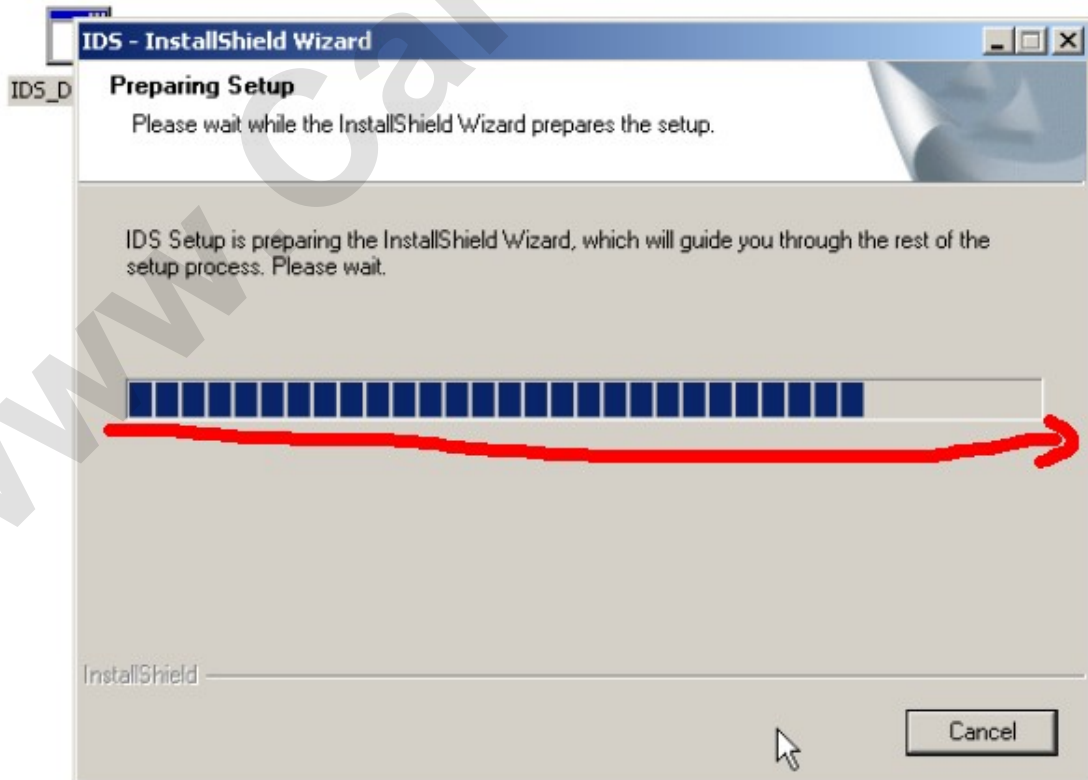
3, setup IDS-DVD126-FULL



4, choose setup language

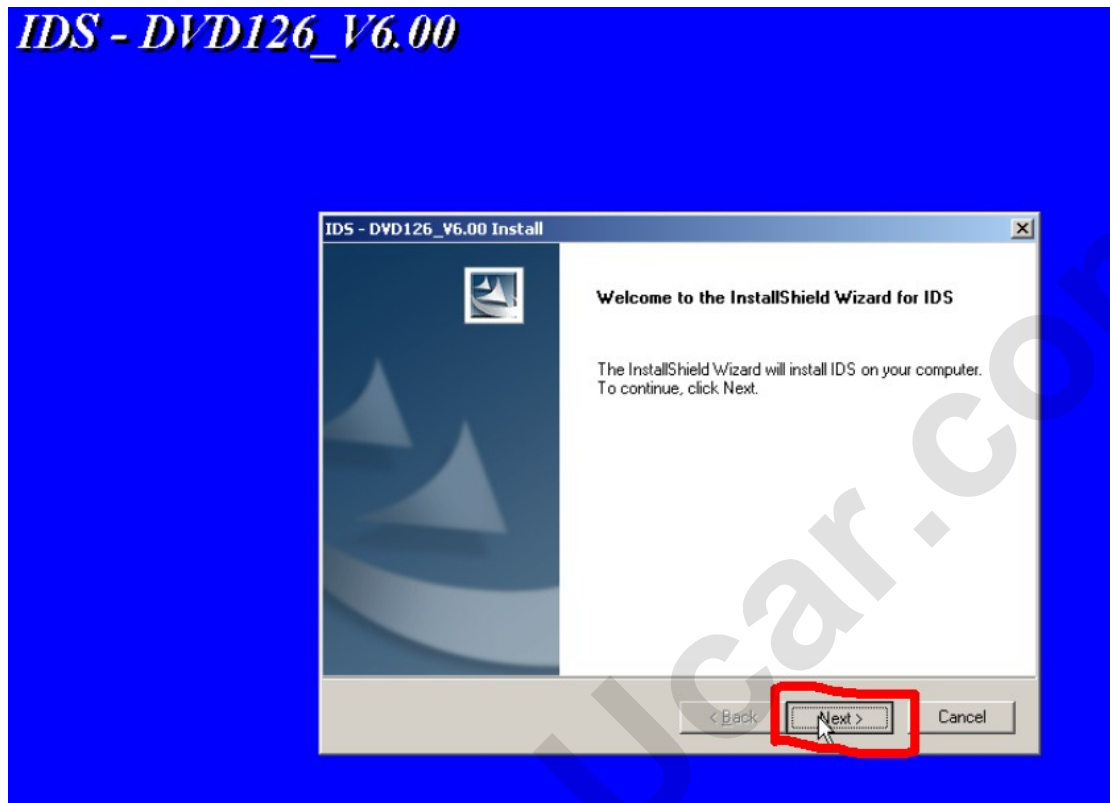


5, software begin to run

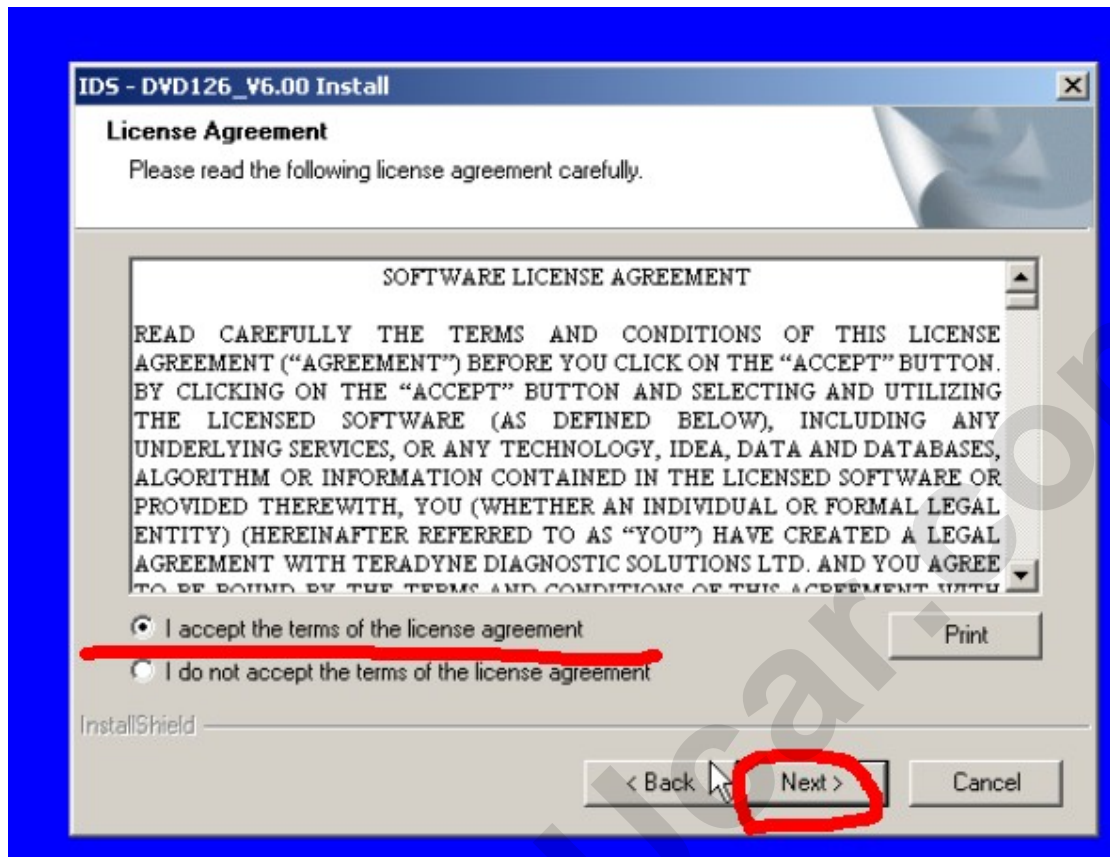


Email: sales02@careucar.com MSN: careucar@hotmail.com
Skype: [careucar](https://www.skype.com/user/careucar) Yahoo: careucar@ymail.com

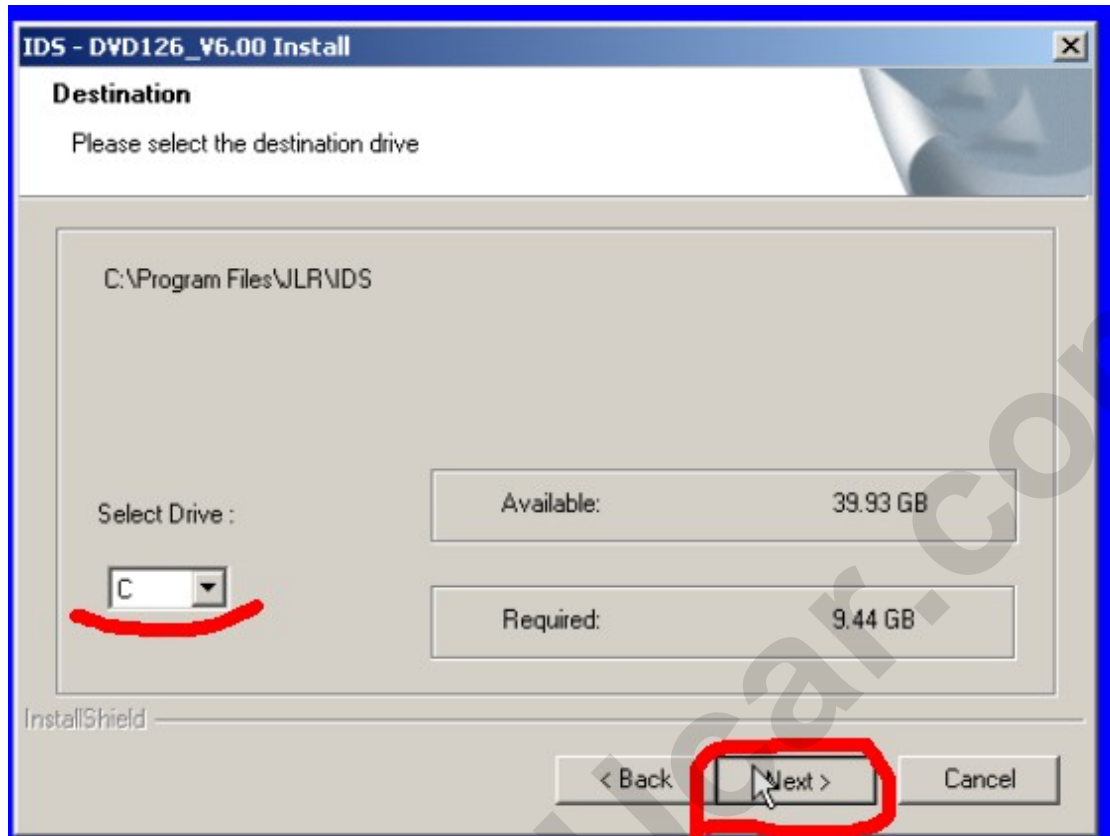
6, click “Next”



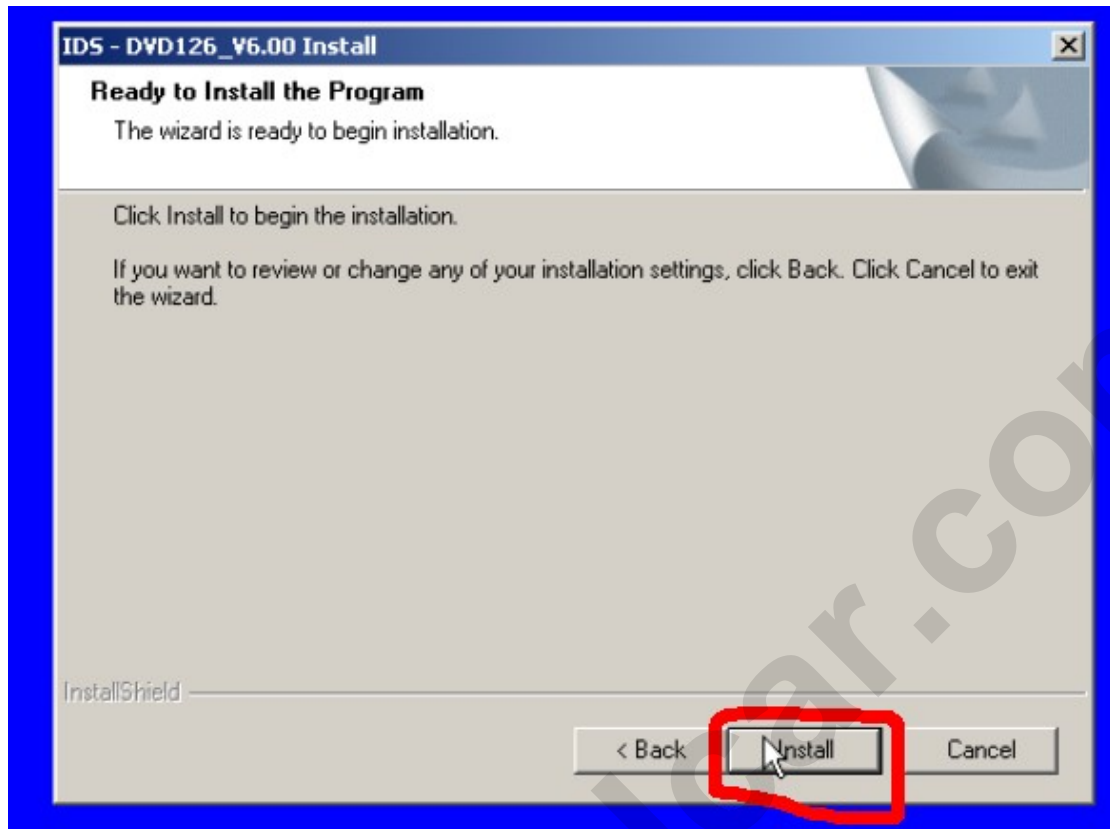
7 select “I accept the terms of license agreement” and click “Next”



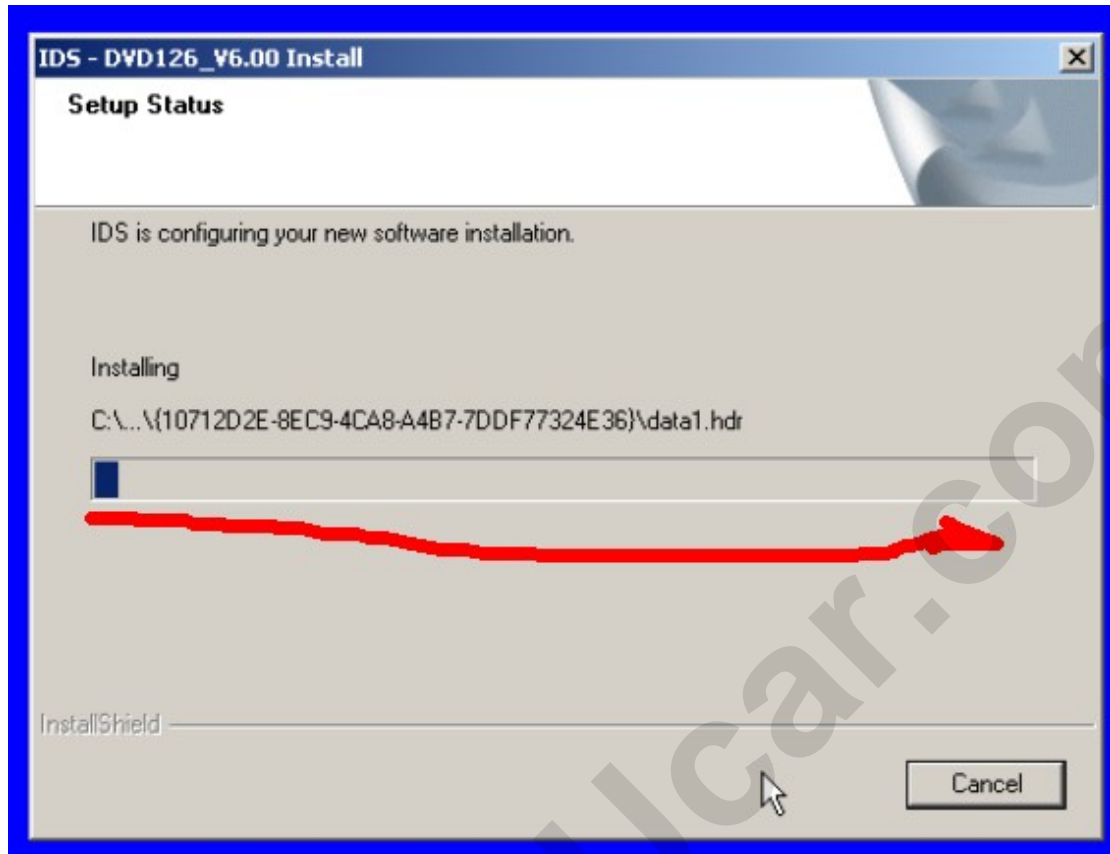
8, Select C:// as destination drive



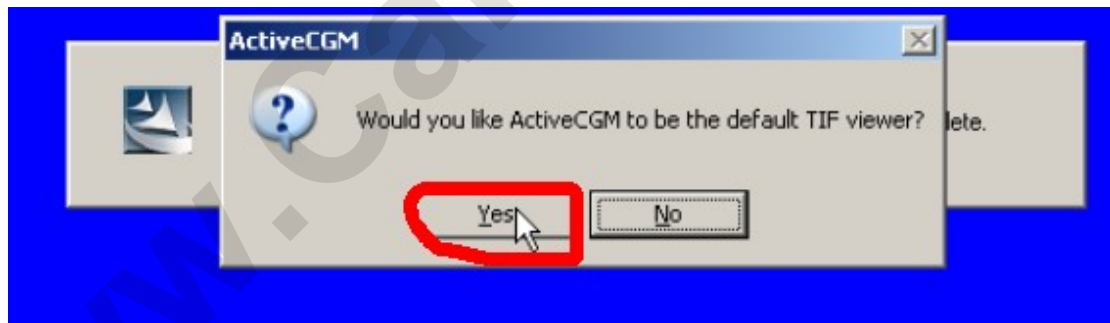
9, click “Install”



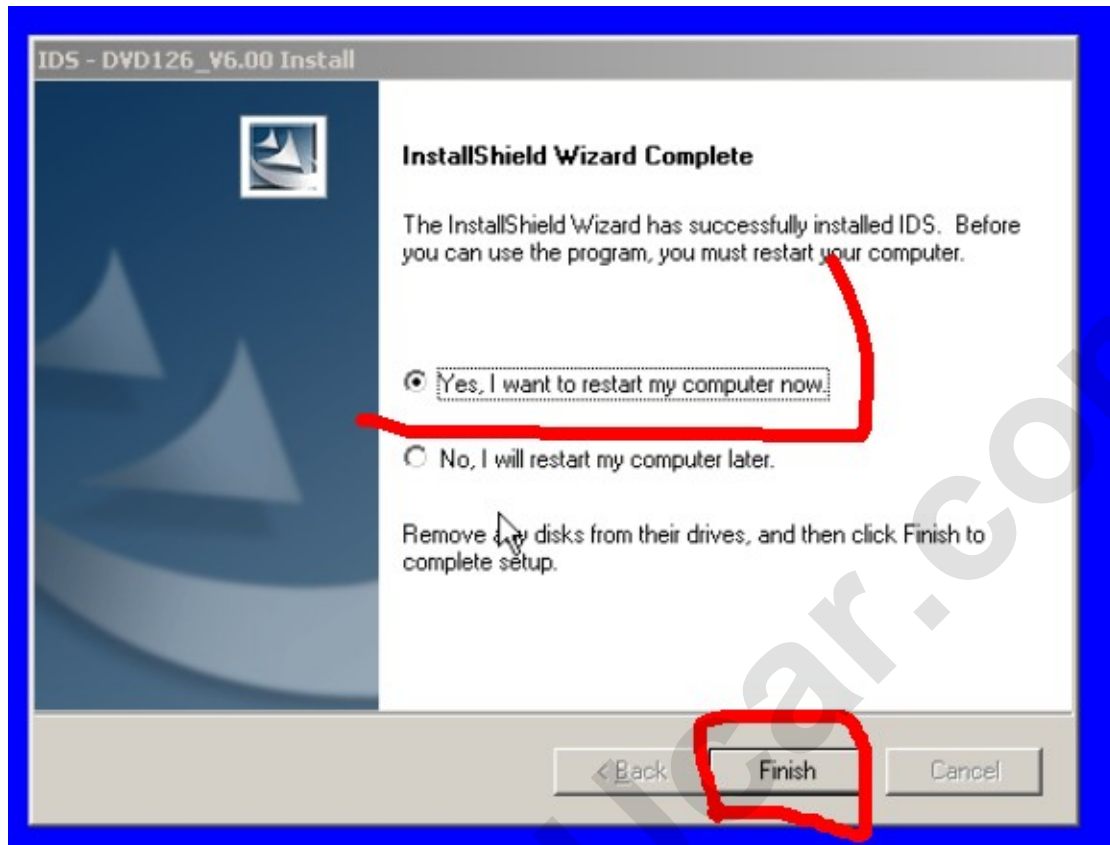
11, software installing, please wait some minutes, then setup successfully.



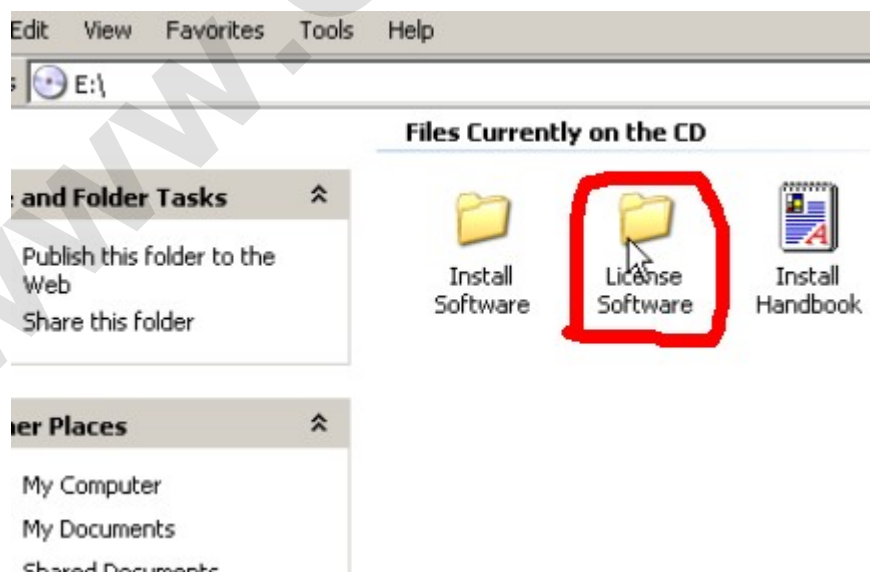
11, click "Yes"



12, Restart computer

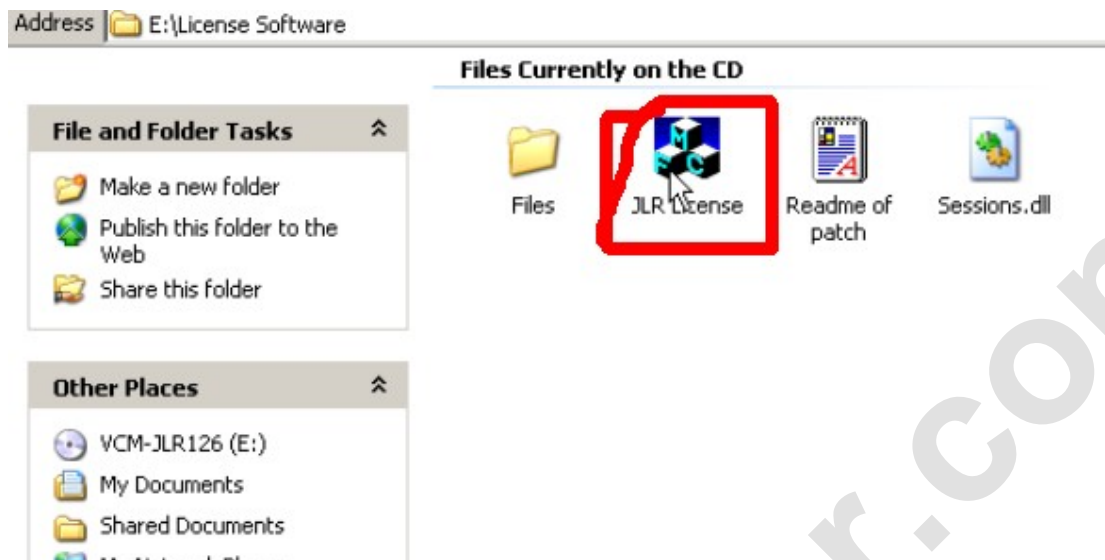


13, after computer run again, to open DVD and click “**License Software**”

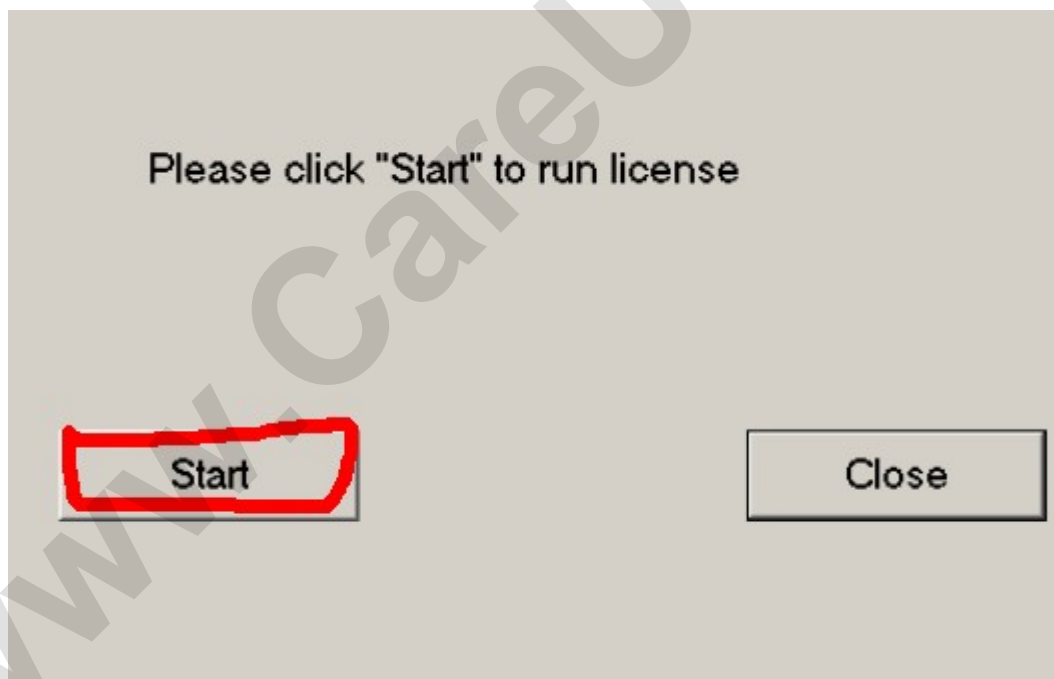


Email: sales02@careucar.com MSN: careucar@hotmail.com
Skype: [careucar](https://www.skype.com/user/careucar) Yahoo: careucar@ymail.com

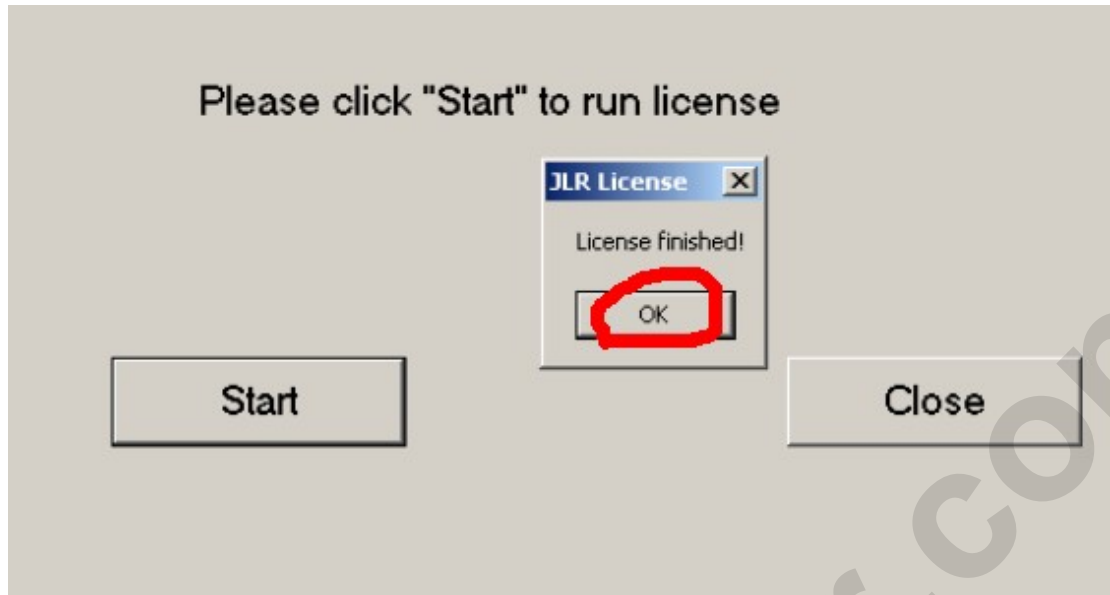
14, run JLR License



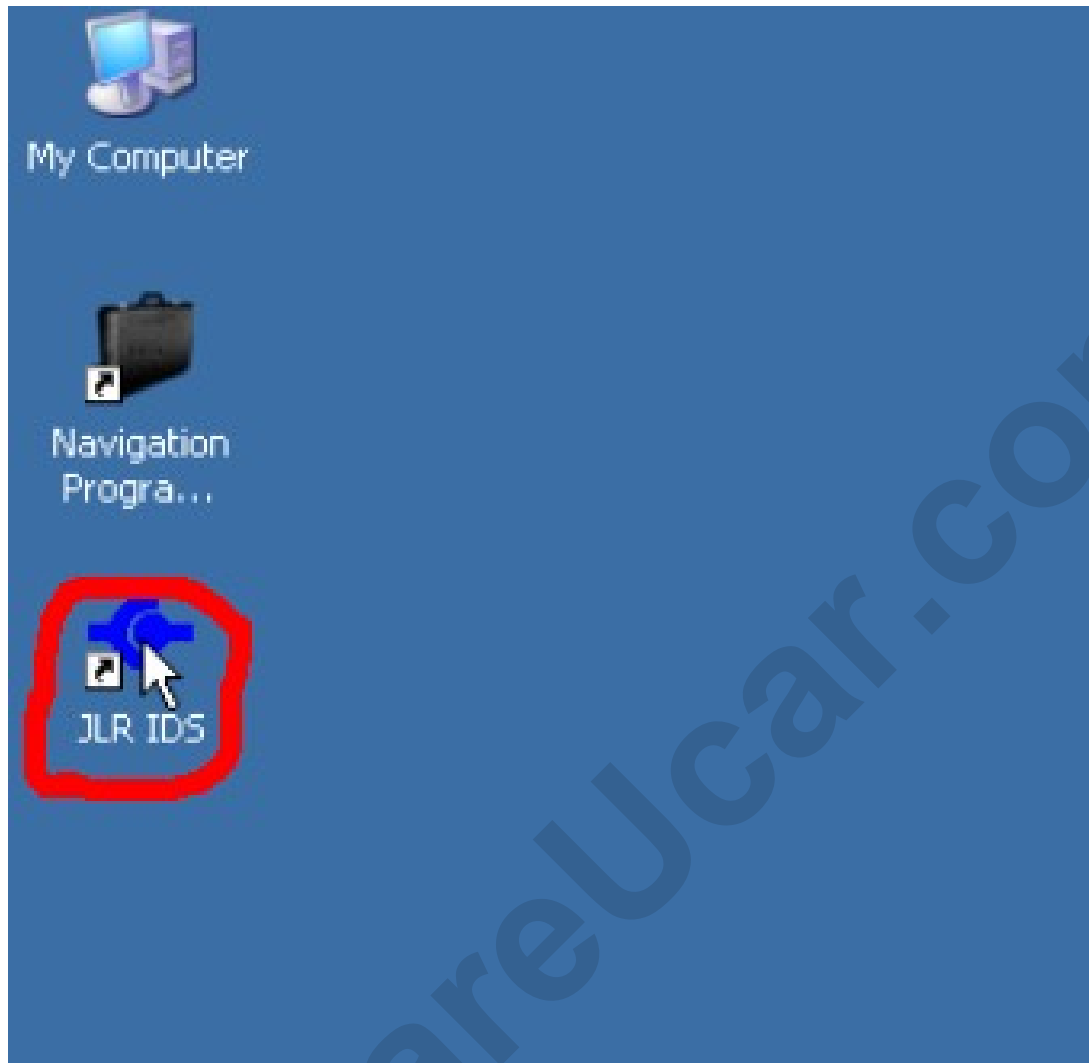
15, please click “Start” to run license



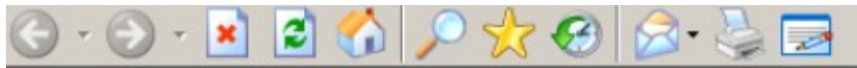
16 “JLR-license” setup successfully



17, to run “JLR IDS”



18, Loading symptom driven diagnostic, wait some minutes



Loading symptom driven diagnostics ...



19, after entering “Dealer Information”, click “Continue”

Dealer Information

Dealer details must be entered to use SDD.

Selection Options

Country: [Redacted] [v]

Town / City: [Redacted] [v]

Dealer Name: [Redacted] [v]

Dealer Details

Use selection options to select dealer, or enter / amend details. * indicates mandatory fields.

Dealer Name: * [Redacted]

Dealer Code: [Redacted]

Address: [Redacted]

Town / City: * [Redacted]

County / State: [Redacted]

Post / ZIP Code: [Redacted]

Country: * [Redacted]

Telephone: [Redacted]

Continue Clear

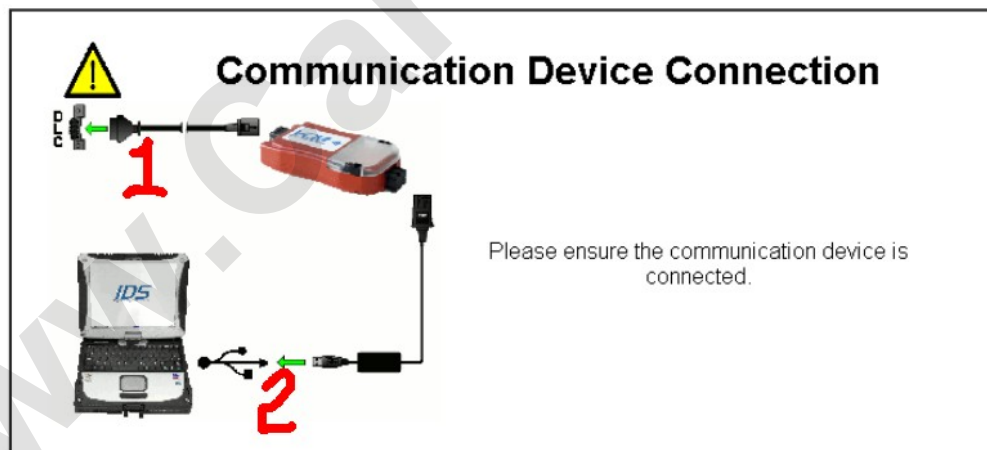
20, click “Continue”

Warning

- To avoid possible serious injury or death: ensure the diagnostic tester is placed in the vehicle so it does not interfere with the safe operation of the vehicle, e.g. do not place the diagnostic tester in the deployment path of any airbag.
- Spark Plug Wire voltage produced by modern ignition systems can be as high as 40kV. While carrying out repairs or checks on ignition systems it is important to adhere to the appropriate safety precautions preventing the possibility of electric shocks.
- When checking the fuel system remember that the fuel system may still be pressurized when the engine is switched off. Always follow the instructions related to fuel system pressure relief. All fuel handling safety precautions must be observed.
- While conducting tests on a hot engine take all safety precautions to prevent skin contact with hot engine components.
- While conducting checks with a running engine ensure adequate safety precautions are observed to prevent contact with moving engine parts. For example; ensure ties or loose clothing do not come into contact with the cooling fan or drive belts.
- As battery fluid is corrosive take adequate safety precautions to prevent eye and skin contact. Gases released during charging are explosive. Never use naked flames or sparks.

 Continue
Copyright © 2008 Ford Motor Company

21, star car, then plug Ford VCM diagnostic cable into car diagnostic socket, and another interface to connect with computer usb COM port, and then click “continue”



 Continue

22, input vehicle VIN or directly click “Read”, then click “Identify Vehicle”

i VIN Entry

Information

Please connect communication device, and switch ignition ON, to automatically read the VIN from the vehicle. If the system fails to read the VIN, or you are not near the vehicle, manually enter the full 17 characters of the VIN below.

Vehicle Identification Number (VIN): **Read**

1 8 2

Identify Vehicle

23, Vehicle Confirmation display well, click **“Yes”**

i Vehicle Confirmation

Vehicle Summary

Model: Jaguar X350 XJ
Engine: 4.2L AJ-33
Model Year: 2003



Image for illustration purposes only

Does this accurately describe the vehicle? **Yes** **No**

24, star to diagnose or programing

Session Type Selection

Vehicle Summary

Model: Jaguar X350 XJ
Engine: 4.2L AJ-33
Model Year: 2003




Image for illustration purposes only

Please select session type to continue.

 Pre Delivery Inspection	 Measurement Applications	 Service Functions	 Campaigns	 Diagnosis
--	---	--	--	--