



Replace ELV Simulator

CG-MB

CGDI-MB OAS 4 20 83

Mileage repair GateWay Read/Write Wiring Diagram Firmware upgrade Bonus points query Update Log

EIS

Read/Write Key

Compute Password

Generate EE

Auto Computer

ELV

EIS Basic Information

SSID: E0 3C 27 D3

EIS number: 2045450908 Mileage: 0 KM The last key used: 1 The penultimate used: Unused

EIS Key Basic Information

	Used	Disabled
Key 1: 05 D3 37 DA 32 FD BC 72	<input checked="" type="checkbox"/>	<input type="checkbox"/>
Key 2: 65 46 F6 8B E1 C0 BB 07	<input type="checkbox"/>	<input type="checkbox"/>
Key 3: BE 69 56 09 CB D5 AC 5C	<input type="checkbox"/>	<input type="checkbox"/>
Key 4: B0 16 3D AD C4 DB 21 B1	<input type="checkbox"/>	<input type="checkbox"/>
Key 5: 8F 54 FF 31 37 F5 1E 4C	<input type="checkbox"/>	<input type="checkbox"/>
Key 6: 44 CD 93 EC 66 43 F8 08	<input type="checkbox"/>	<input type="checkbox"/>
Key 7: F2 00 47 B2 E2 55 AA 4D	<input type="checkbox"/>	<input type="checkbox"/>
Key 8: 8C 5A 7C 8F 4F 43 23 B0	<input type="checkbox"/>	<input type="checkbox"/>

Key password:

Special key: 22 2C AD 28 0C 2A 33 49

Erase password:

Enable Password:

Initialized Personalized
 TP cleared Activated
 Dealer EIS FBS4

Read success!

OBD connects Auto, Read EIS data

CGDI-MB OAS 4 20 83

Mileage repair GateWay Read/Write Wiring Diagram Firmware upgrade Bonus points query Update Log

EIS

Read/Write Key

Compute Password

Generate EE

Auto Computer

ELV

Collect Data and Upload the File

EIS Type:

1.Insert the original car key into the EIS
2.Insert key into the CGMB device and wait for the collection
3.Insert the car key into the EIS 10s and dial out
4.Insert the key into the EIS
5.Unplug the key for 5 seconds and then insert the key into EIS
6.Insert the key into the CGMB device
7.Save the generated files

Copy key with key
 Copy key without key

Collect Data

Upload Data

Query the Server and Wait For the Results

Key password

Operation Tip:
1. Please choose the way to collect the key first, and then click the 'Collect Data' button
2. After the collection is completed, click the 'Upload Data' button to upload the collected data
3. Click the 'Query Result' button and check the 'Auto Refresh' option, the program will start the automatic query.

Auto Refresh

Query Result

Welcome to use!

Turn to“compute password”, collect data

CGDI-MB OAS 4 20 83

Mileage repair GateWay Read/Write Wiring Diagram Firmware upgrade Bonus points query Update Log

EIS

Read/Write Key

Compute Password

Generate EE

Auto Computer

ELV

Collect Data and Upload the File

EIS Type:

- 1.Insert the original car key into the EIS
- 2.Insert key into the CGMB device and wait for the collection
- 3.Insert the car key into the EIS 10s and dial out
- 4.Insert the key into the EIS
- 5.Unplug the key for 5 seconds and then insert the key into EIS
- 6.Insert the key into the CGMB device
- 7.Save the generated files

Query the Server and Wait For the Results

Key password `D2 74 07 FB D8 3C 3A BF`

```
The vehicle voltage is 12.01V
This key is BE key!
```

Copy key with key
 Copy key without key

Auto Refresh

Collection closed!

The collection process will not be described one by one, upload data, successfully query the password and copy the key password

CGDI-MB OAS 4 20 83

Mileage repair GateWay Read/Write Wiring Diagram Firmware upgrade Bonus points query Update Log

EIS

Read/Write Key

Compute Password

Generate EE

Auto Computer

ELV

EIS Basic Information

SSID: E0 3C 27 D3 Write

EIS number: 2045450908

VIN: Write

Mileage: 0 KM

The last key used: 1

The penultimate used: Unused

Allow Modify

EIS Key Basic Information

	Used	Disabled
Key 1	<input checked="" type="checkbox"/>	<input type="checkbox"/>
Key 2	<input type="checkbox"/>	<input type="checkbox"/>
Key 3	<input type="checkbox"/>	<input type="checkbox"/>
Key 4	<input type="checkbox"/>	<input type="checkbox"/>
Key 5	<input type="checkbox"/>	<input type="checkbox"/>
Key 6	<input type="checkbox"/>	<input type="checkbox"/>
Key 7	<input type="checkbox"/>	<input type="checkbox"/>
Key 8	<input type="checkbox"/>	<input type="checkbox"/>

Key 1: 05 D3 37 DA 32 FD BC 72

Key 2: 65 46 F6 8B E1 C0 BB 07

Key 3: BE 69 56 09 CB D5 AC 5C

Key 4: B0 16 3D AD C4 DB 21 B1

Key 5: 8F 54 FF 31 37 F5 1E 4C

Key 6: 44 CD 93 EC 66 43 F8 08

Key 7: F2 00 47 B2 E2 55 AA 4D

Key 8: 8C 5A 7C 8F 4F 43 23 B0

Key password: D2 74 07 FB D8 3C 3A BF Copy Paste

Special key: 22 2C AD 28 0C 2A 33 49

Erase password: Get

Enable Password: Get

Initialized Personalized

TP cleared Activated

Dealer EIS FBS4

Read EIS Data

Save EIS Data

Load EIS Data

Write EIS Data

Wipe the EIS

Clear TP Protection

Activate EIS

Disable Enable

Sync W204 ELV

Welcome to use!

Turn to the EIS interface and paste the key password

CGDI-MB OAS 4 20 83

Mileage repair GateWay Read/Write Wiring Diagram Firmware upgrade Bonus points query Update Log

EIS

Read/Write Key

Compute Password

Generate EE

Auto Computer

ELV

EIS Basic Information

SSID: EO 3C 27 D3 VIN: Allow Modify

EIS number: 2045450908 Mileage: 0 KM The last key used: 1

The penultimate used: Unused

EIS Key Basic Information

Key	Hex	Copy	Paste
Key 1	05 D3 37 DA 32 F1 BC	<input type="checkbox"/>	<input type="checkbox"/>
Key 2	65 46 F6 8B E1 C0 BB	<input type="checkbox"/>	<input type="checkbox"/>
Key 3	BE 89 56 09 CB D5 AC	<input type="checkbox"/>	<input type="checkbox"/>
Key 4	B0 16 3D AD C4 D1 21	<input type="checkbox"/>	<input type="checkbox"/>
Key 5	8F 54 FF 31 37 F5 1	<input type="checkbox"/>	<input type="checkbox"/>
Key 6	44 CD 93 EC 66 43 F8 08	<input type="checkbox"/>	<input type="checkbox"/>
Key 7	F2 00 47 B2 E2 55 AA 4D	<input type="checkbox"/>	<input type="checkbox"/>
Key 8	8C 5A 7C 8F 4F 43 23 B0	<input type="checkbox"/>	<input type="checkbox"/>

Initialized Personalized
 TP cleared Activated
 Dealer EIS FBS4

Benz Monster

Save file successfully!

确定

Save file successfully!

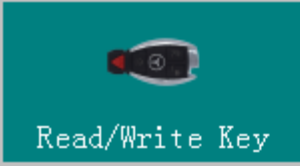
Save data, Default file name



Put on the simulator and clip the K-line



EIS



Read/Write Key



Compute Password



Generate EE



Auto Computer



ELV

ELV Basic Information

ELV Number	VIN	<input type="button" value="Allow Modify"/>
<input type="text"/>	<input type="text"/>	
ELV SerialNumber	Hardware Version	Software Version
<input type="text"/>	<input type="text"/>	<input type="text"/>

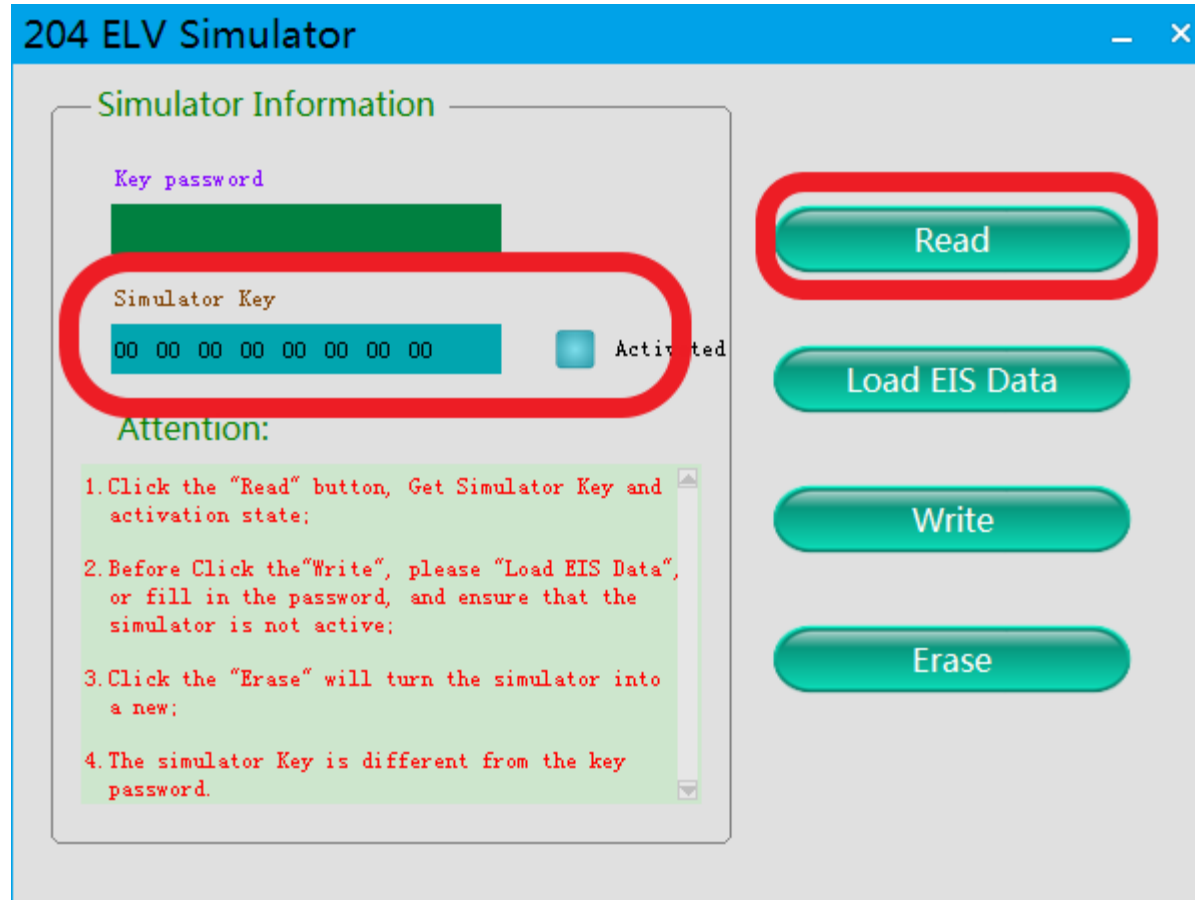
ELV KEY Information

	Disabled		SSID
Key 1	<input type="text"/>	<input type="checkbox"/>	<input type="text"/>
Key 2	<input type="text"/>	<input type="checkbox"/>	Key password <input type="button" value="Paste"/>
Key 3	<input type="text"/>	<input type="checkbox"/>	<input type="text"/>
Key 4	<input type="text"/>	<input type="checkbox"/>	Special key
Key 5	<input type="text"/>	<input type="checkbox"/>	<input type="text"/>
Key 6	<input type="text"/>	<input type="checkbox"/>	Erase password <input type="button" value="Get"/>
Key 7	<input type="text"/>	<input type="checkbox"/>	<input type="text"/>
Key 8	<input type="text"/>	<input type="checkbox"/>	<input type="checkbox"/> Initialized <input type="checkbox"/> Personalized
			<input type="checkbox"/> TP cleared <input type="checkbox"/> Activated

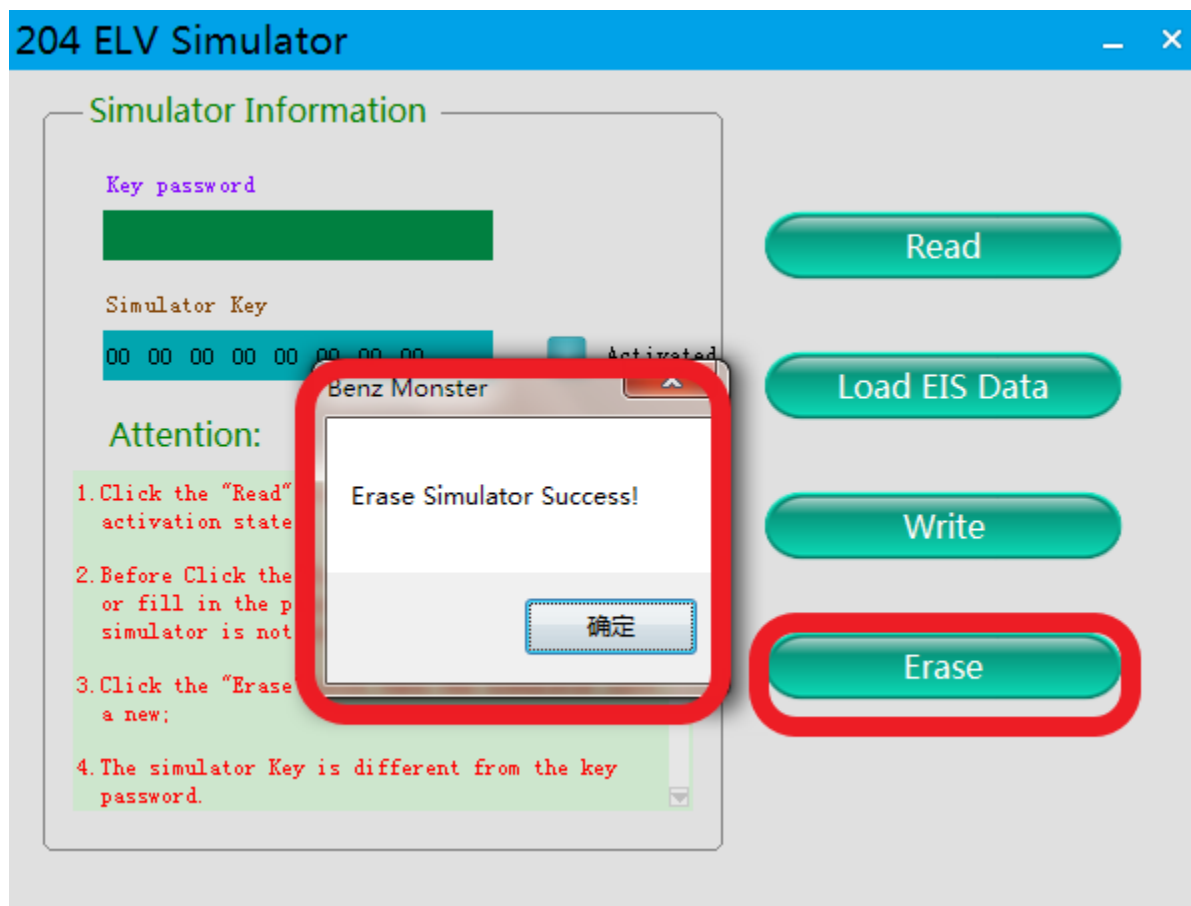
W204, W207, W212

-
-
-
-
-
-
-
-
-

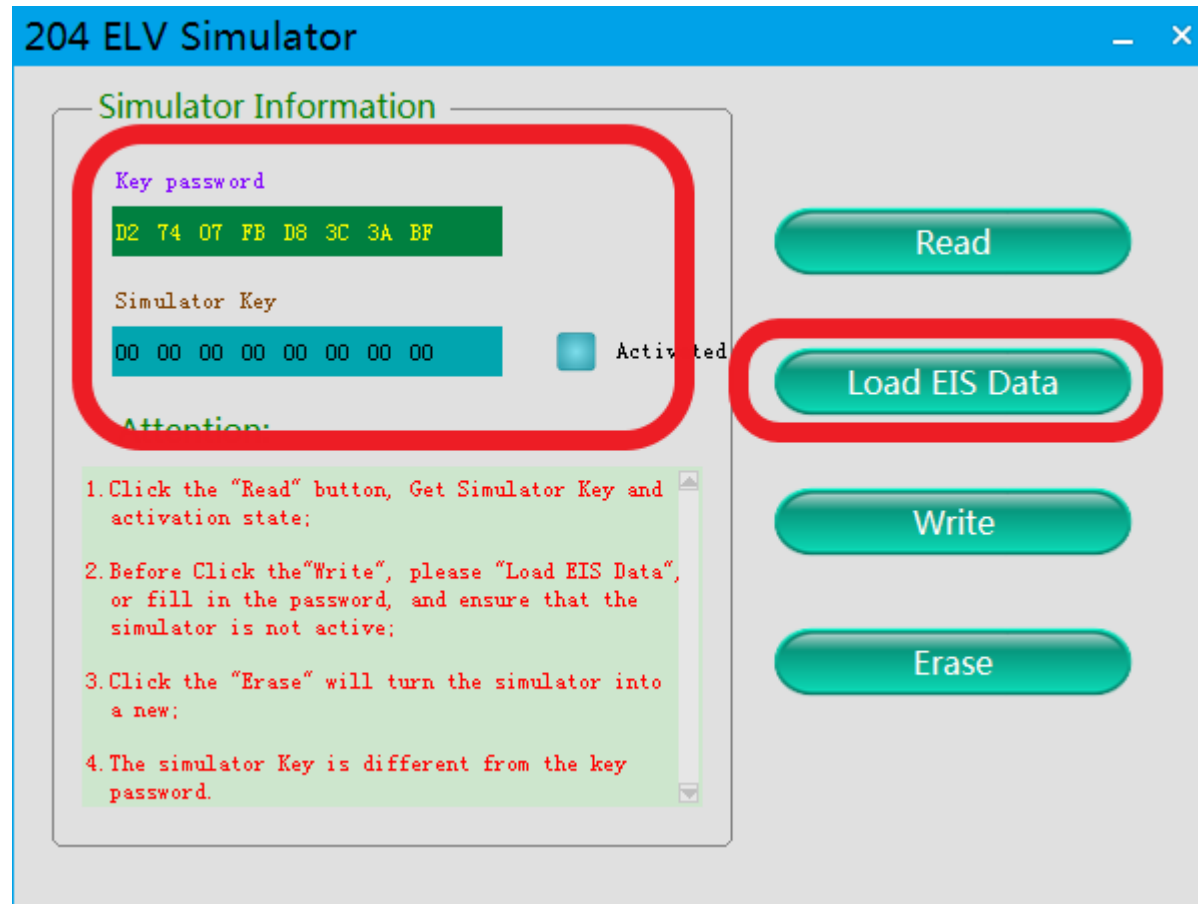
Click“ELV”, enter“ simulator”



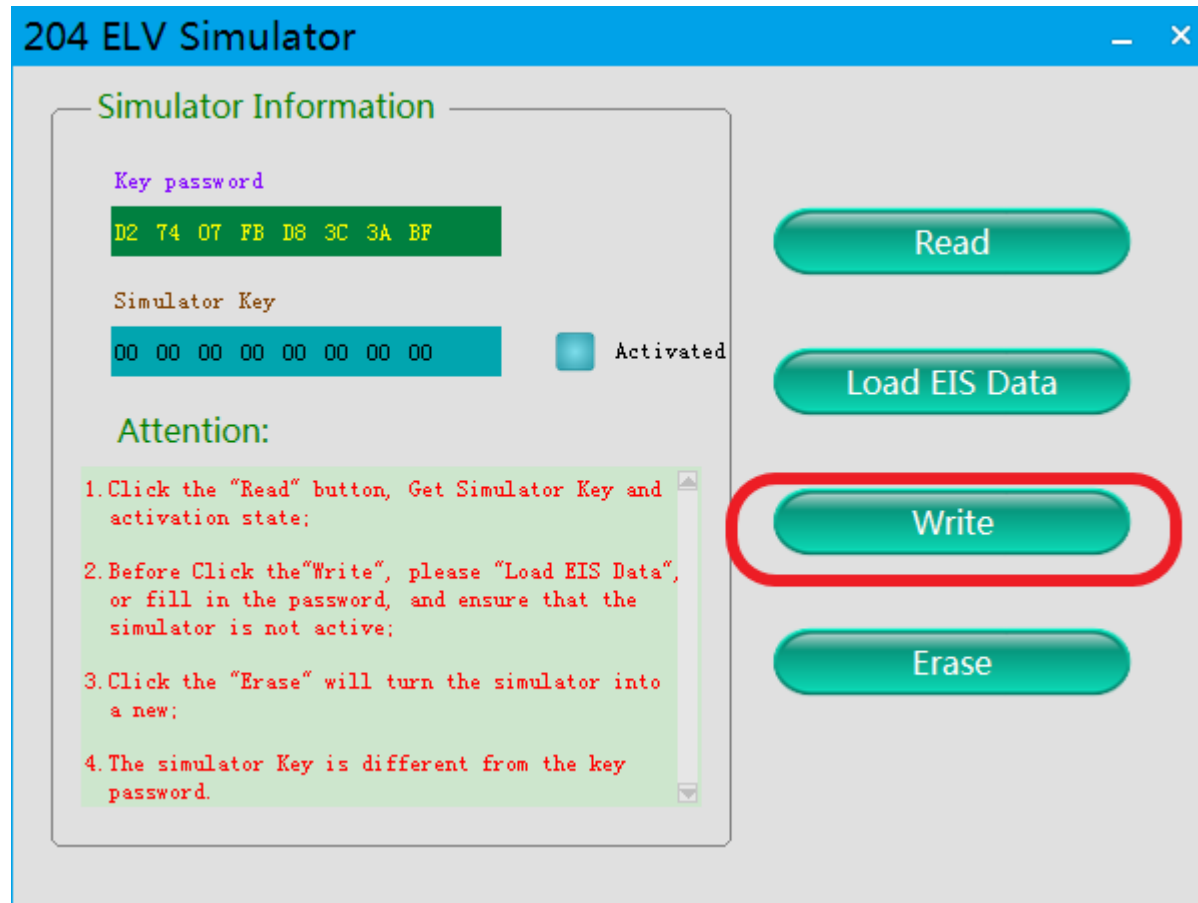
Read Simulator, display related information



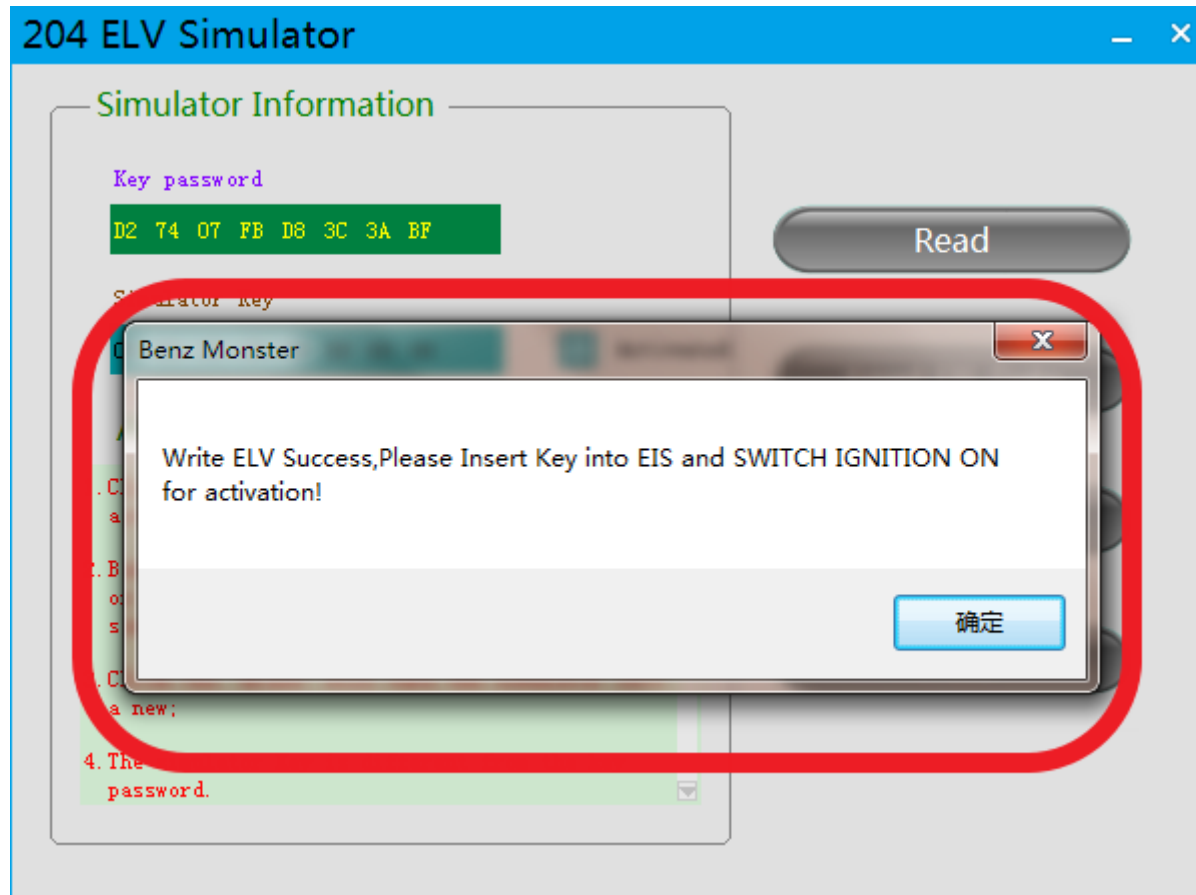
erase simulator



Load the EIS data just saved and check whether the key password is correct



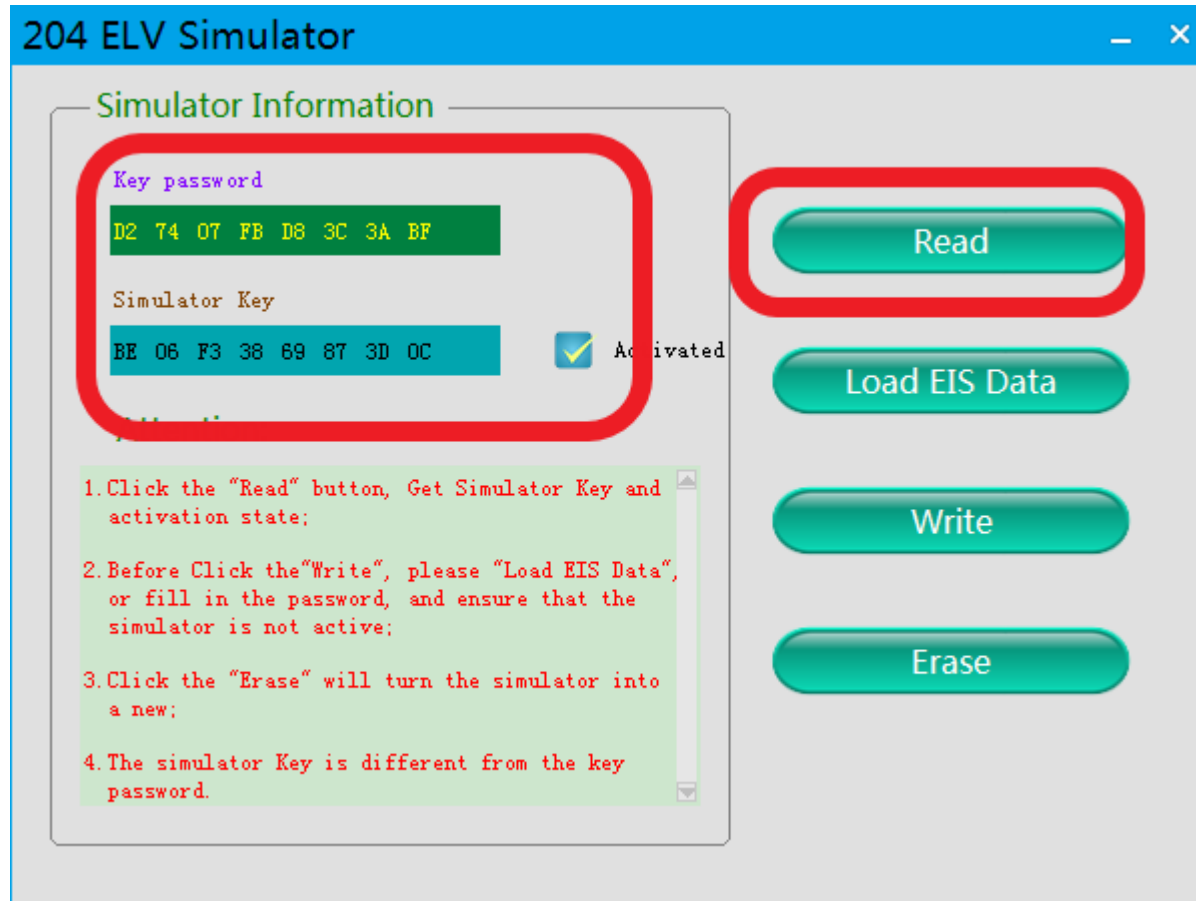
Click 'write' button



Write ELV success, please insert key into EIS and switch ignition on for activation



Actual operation



Read simulator again, show activated, match successfully !