

KWP2000+ chip tuning

KWP2000 PLUS

KWP2000 Plus Interface for ECU flash reading/writing over OBD2 diagnostic socket for a wide range of ECU units.

- Connects to USB
- Supports high speed ECU flashing
- Led Indications for USB-power/CAR-power/rx/tx
- Can read and write a lot more ECU's than the normal KWP2000 Software

Restrictions:

- Backup of the ECU memory is not supported for some of the listed ECU`s here
- Some ECU`s can not be flashed over the OBD2 connector in the car, in this case you have to remove the ECU from the car and flash it "on desk"

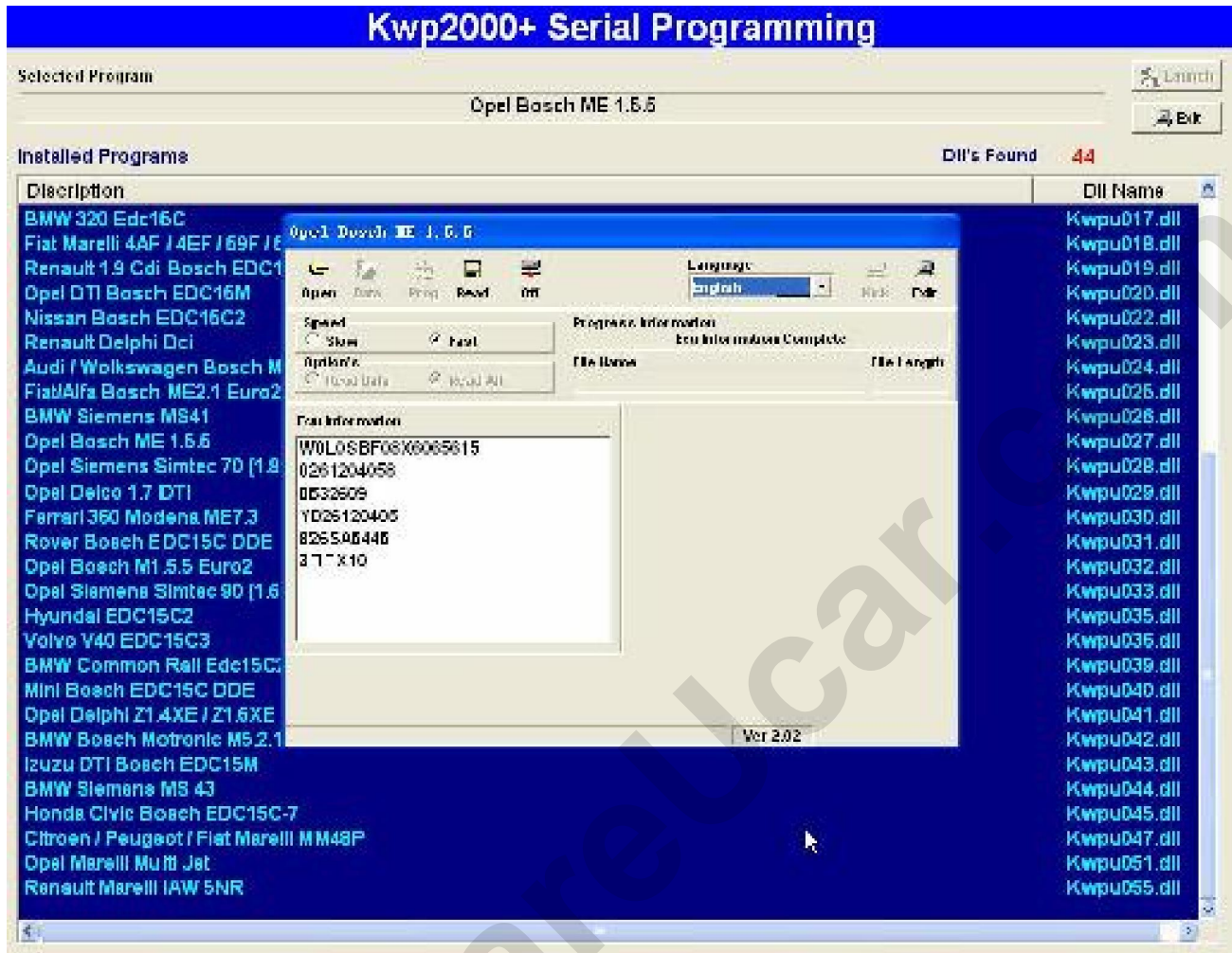
Package includes:

- KWP2000 Plus Flasher Interface
- Shielded USB A to USB B connection cable
- OBD2 connection cable
- 20 pin BMW connection cable



KWP2000+ chip tuning

Software Screenshot:



Supported Car`s and their ECU`s :

ECU FAMILY	READ ORIGINAL FILE	PROGRAM TUNED FILE
FIAT/ALFA BOSCH M 1.5.5 Euro 2	NO	YES
FIAT/ALFA BOSCH ME3x - ME7x	YES	YES
FIAT/ALFA BOSCH ME2.1 EURO 2	NO	YES
FIAT/ALFA BOSCH EDC15C Euro2	YES	YES
FIAT/ALFA BOSCH EDC15C-7 Euro 3 Fase 1/2	YES	YES
FIAT PUNTO BOSCH EDC15C-6 Euro 2/3	YES	YES
MCC SMART Euro 2/3/4	NO	YES
MCC SMART EDC15C5	YES	YES
CITROEN/PEUGEOT BOSCH EDC15C2	YES	YES
MERCEDES CDI BOSCH EDC15C5 (29F400)	NO	YES
MERCEDES CDI BOSCH EDC15C6	YES	YES

Email: sales02@careucar.com MSN: careucar@hotmail.com
 Skype: [careucar](https://www.skype.com/name/careucar) Yahoo: careucar@ymail.com

KWP2000+ chip tuning

AUDI/VOLKSWAGEN BOSCH EDC15x DIESEL	YES	YES
AUDI/VOLKSWAGEN BOSCH ME7X (Boot Mode)	YES	YES
CHRYSLER BOSCH EDC15C2	YES	YES
OPEL DTI BOSCH EDC15M	NO	YES
RENAULT 1.9 CDI BOSCH EDC15C2	YES	YES
NISSAN BOSCH EDC15C2	YES	YES
HYUNDAI EDC15C2	YES	YES
OPEL BOSCH ME 1.5.5	YES	YES
OPEL SIMTEC 70 (1.8 - 2.0)	YES	YES
OPEL SIMTEC 90 (1.6-2.0)	YES	YES
OPEL DELCO 1.7 DTI	YES	YES
FERRARI 360 MODENA ME 7.3.1	YES	YES
ROVER BOSCH EDC15C DDE	YES	YES
OPEL BOSCH M 1.5.5 EURO 2	YES	YES
BMW SIEMENS MS 41	YES	YES
VOLVO V40 1.9 EDC15C3	YES	YES
BMW 2.0 D EDC15C	YES	YES
BMW 3.0 D EDC15	YES	YES
MINI BOSCH EDC15 DDE	YES	YES
OPEL DELPHI Z14XE/Z16X6	YES	YES
BMW BOSCH MOTRONIC M5.2.1B	YES	YES
ISUZU DTI BOSCH EDC15M	YES	YES
BMW SIEMENS MS43	YES	YES
HONDA CIVIC BOSCH EDC15C-7	YES	YES
CITROEN/PEUGEOT BOSCH ME 7.4.4	YES	YES
BMW SIEMENS MS42	YES	YES
ALFA ROMEO JTS MED 7.1.1 EURO 3 (Boot Mode)	YES	YES
FIAT IAW MARELLI 4EF/59F/5NF/MULTIJET	YES	YES
CITROEN/PEUGEOT/FIAT MARELLI MM48P	YES	YES
CITROEN/PEUGEOT BOSCH AS41	YES	YES
OPEL IAW MARELLI MULTIJET	YES	YES
RENAULT DELPHI DCI	YES	YES
RENAULT MARELLI IAW 5NR	YES	YES