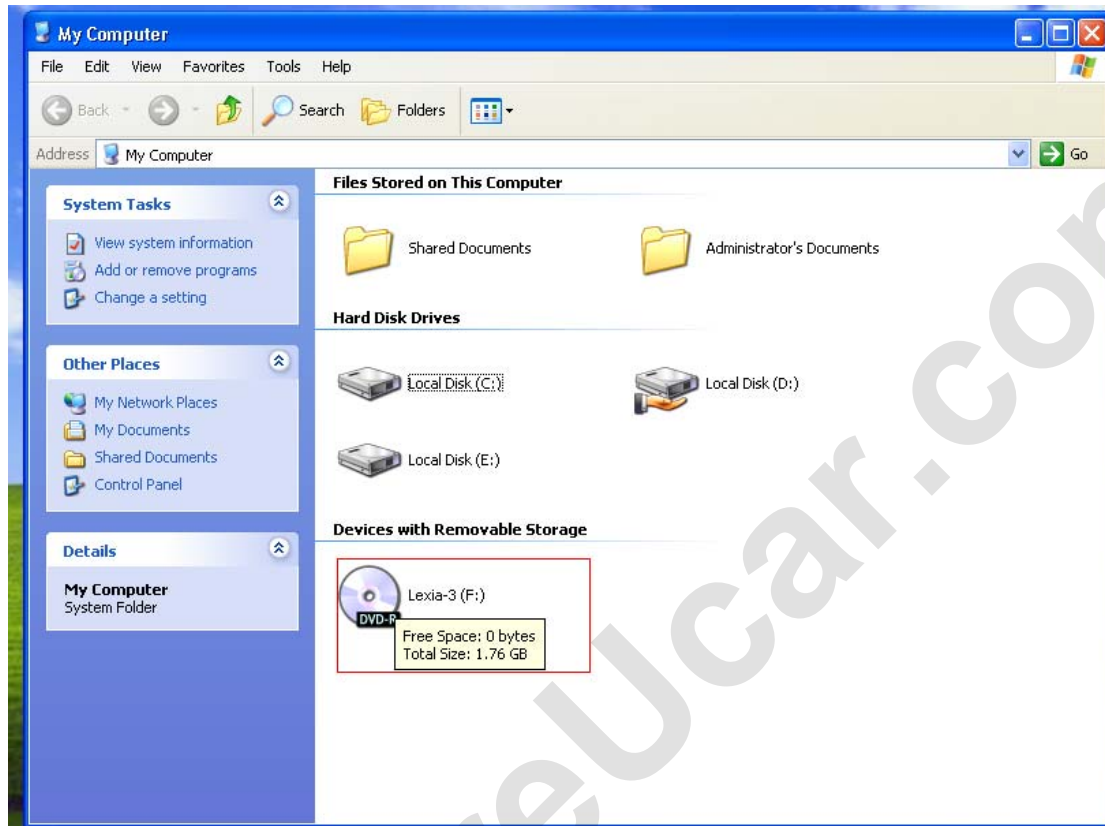
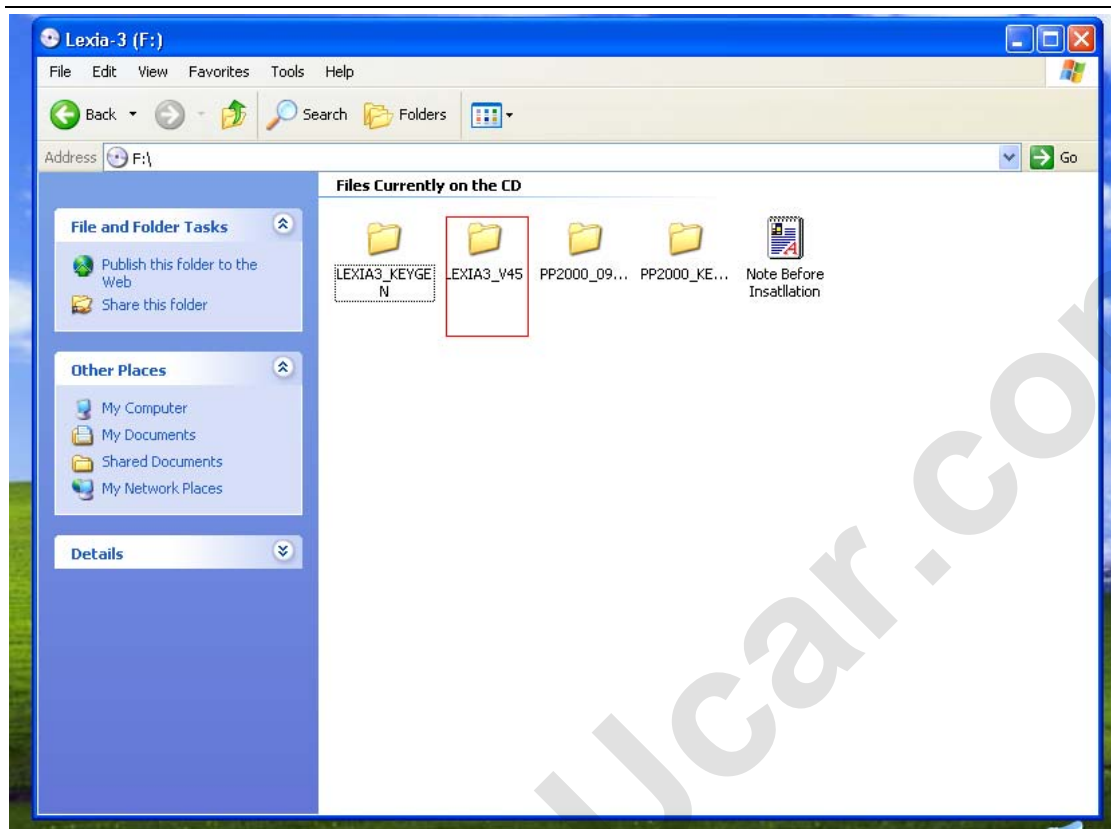


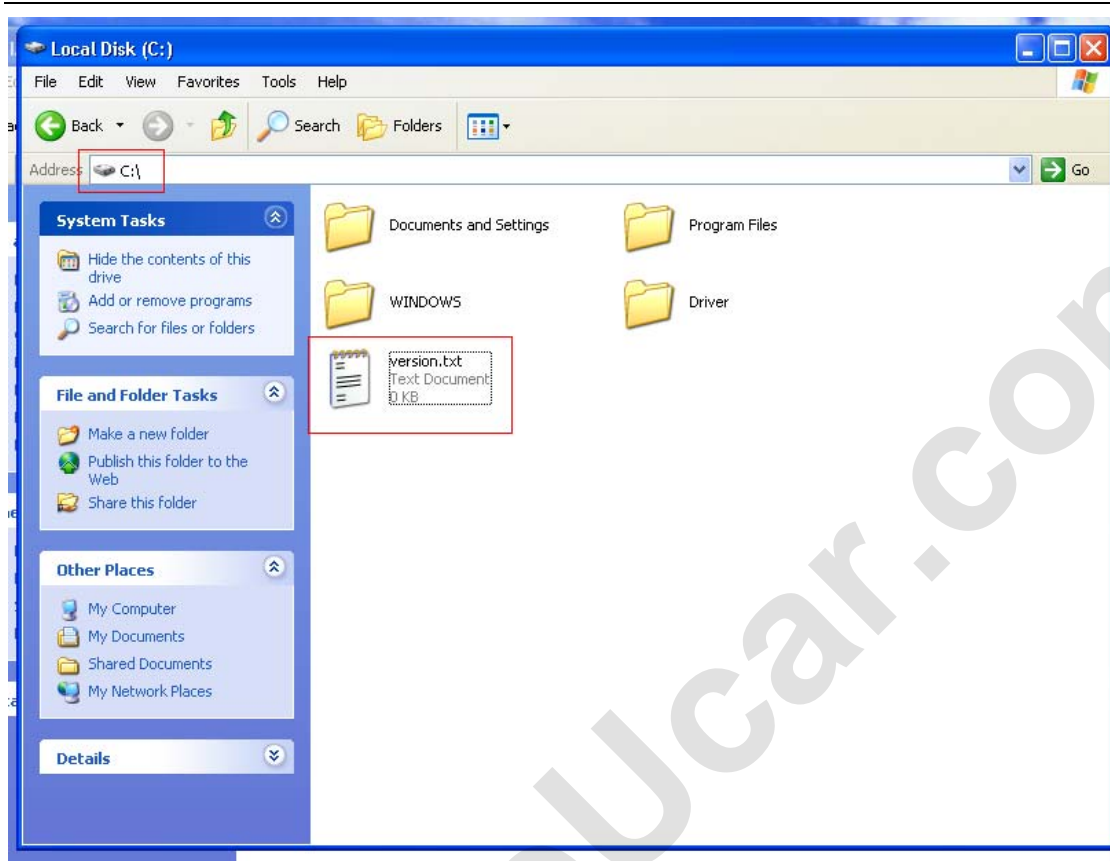
1 打开 cd 光盘 open the CD disk



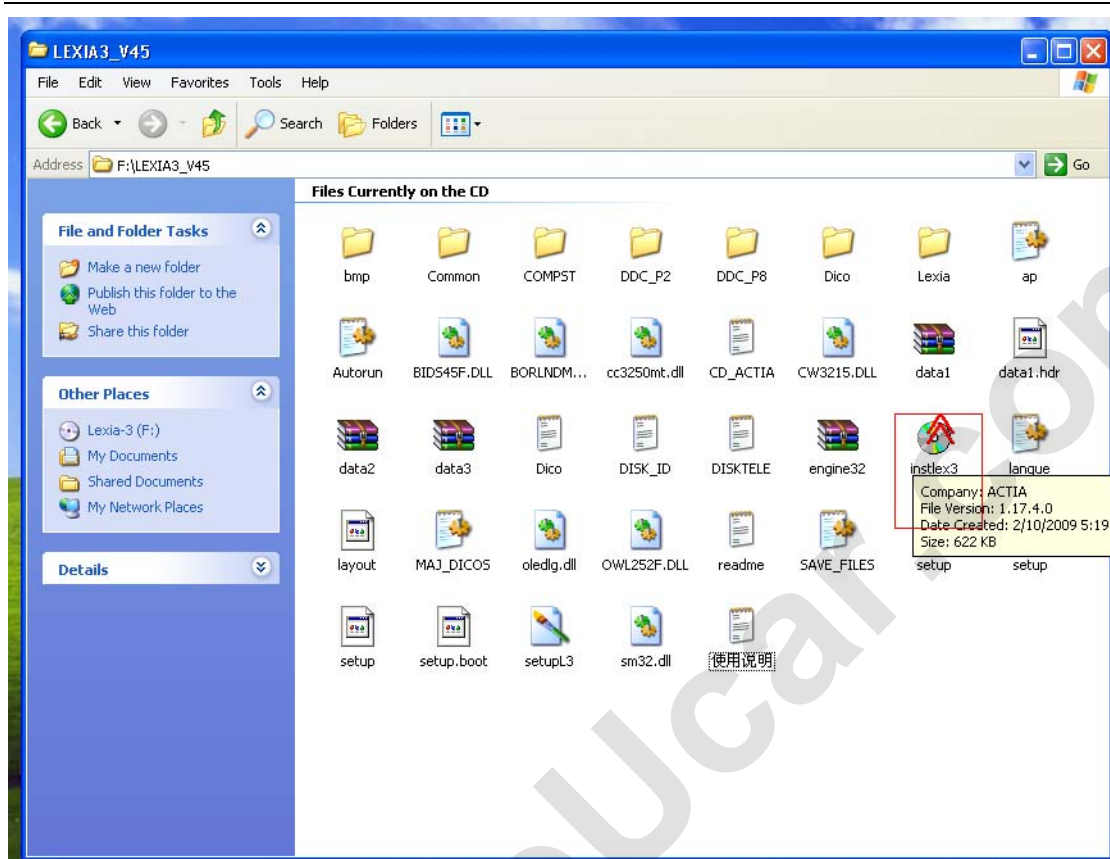
2 找到【LAXIA3-V45】软件 find the [lexia-3 v45]software.



3 安装 lexia3 软件前 请在 C 盘建立一个空的文本文档命名为【version.txt】 before you install the lexia-3 software, please install a blank file which name is [version.txt]



4 点击【instlex3】click[instlex 3]



5 安装 【enter】 install[enter]



6 选择安装的国家【语言】 choose the installation country[language]



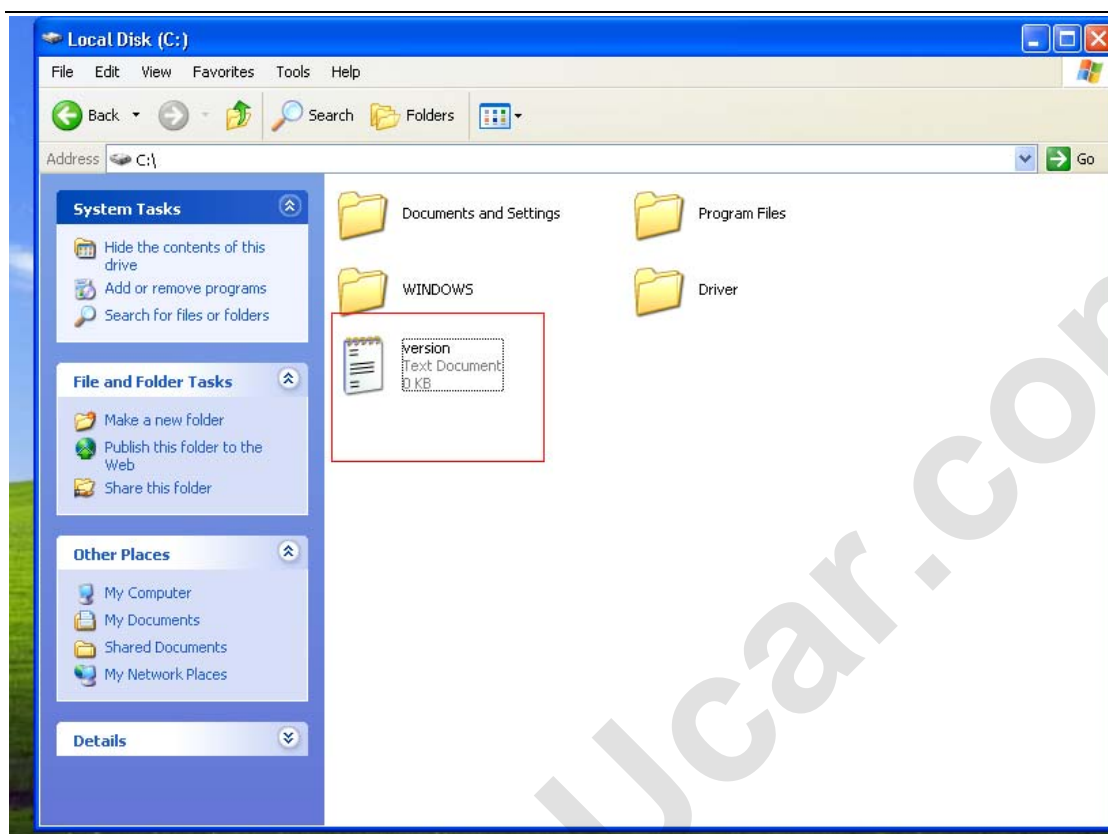
6 选择语言【ok】choose language[ok]



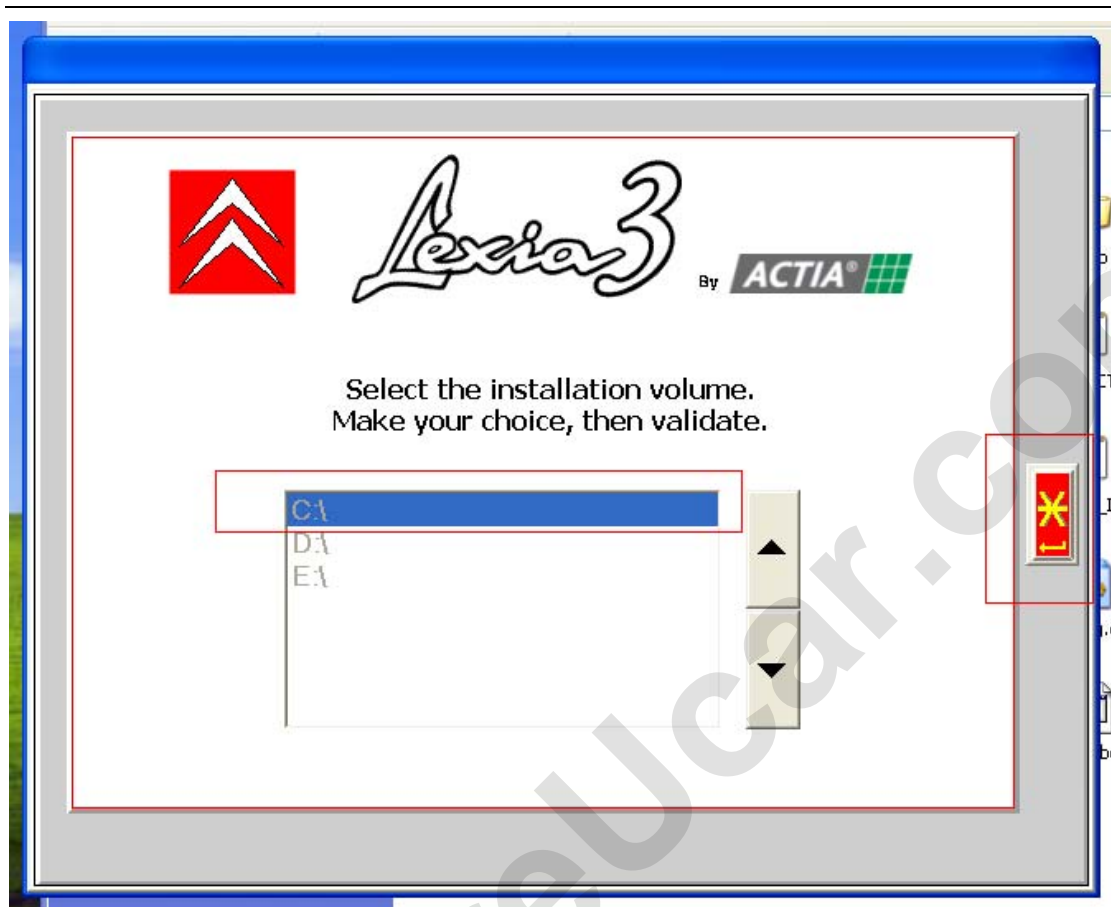
7 电脑提示【please install the PROXIA recoveryCD before installing this version】the computer will remind you[please install the proxia recovery CD before installing this version]

（若有这个提示 表示有的电脑系统有缺陷 请在电脑的 c 盘建立空的文本文档命名【version】）If have such remediation, it means your computer system have disadvantage, please install a blank txt file named[version] in C partition.





7 选择按在 C 盘 please choose install in C Disk.



8 开始安装 start installing.



Lexia3

By **ACTIA** 

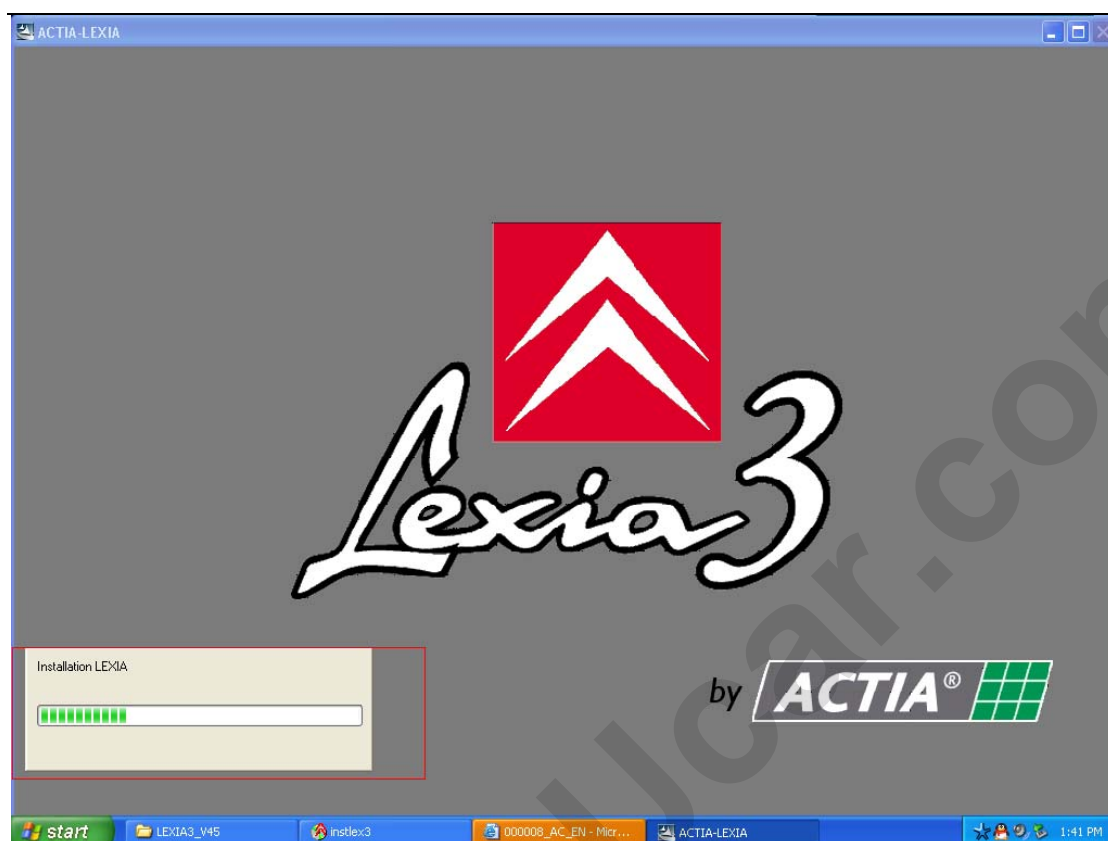
Operation in progress, please wait.

www.CareUcar.com

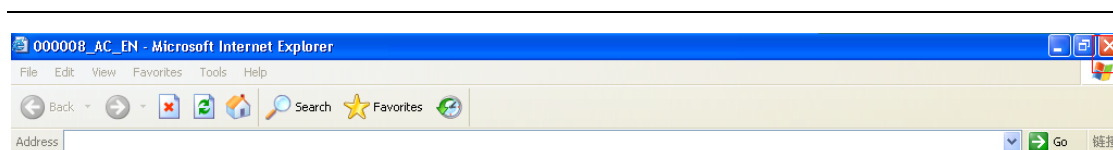
Email: sales02@careucar.com MSN: careucar@hotmail.com

Skype: [careucar](https://www.skype.com/people/careucar)

Yahoo: careucar@ymail.com



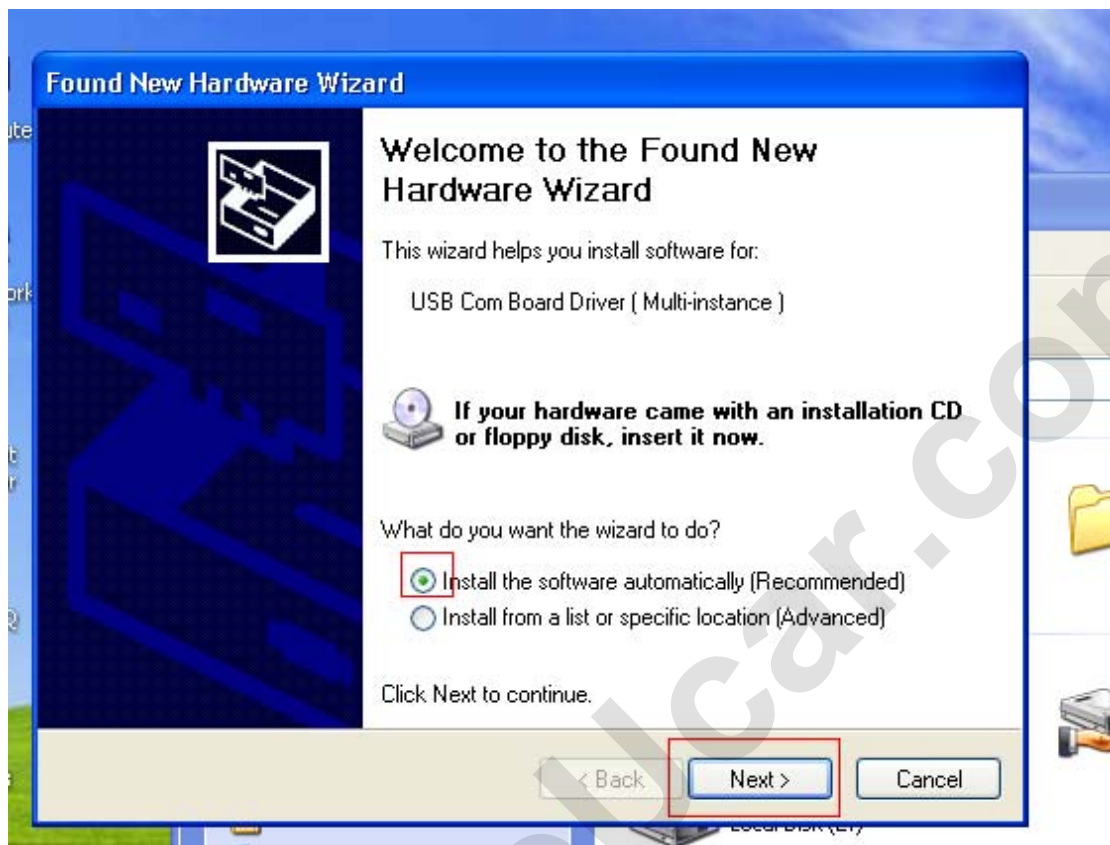
9 关掉 Internet 提示 close the internet tip.



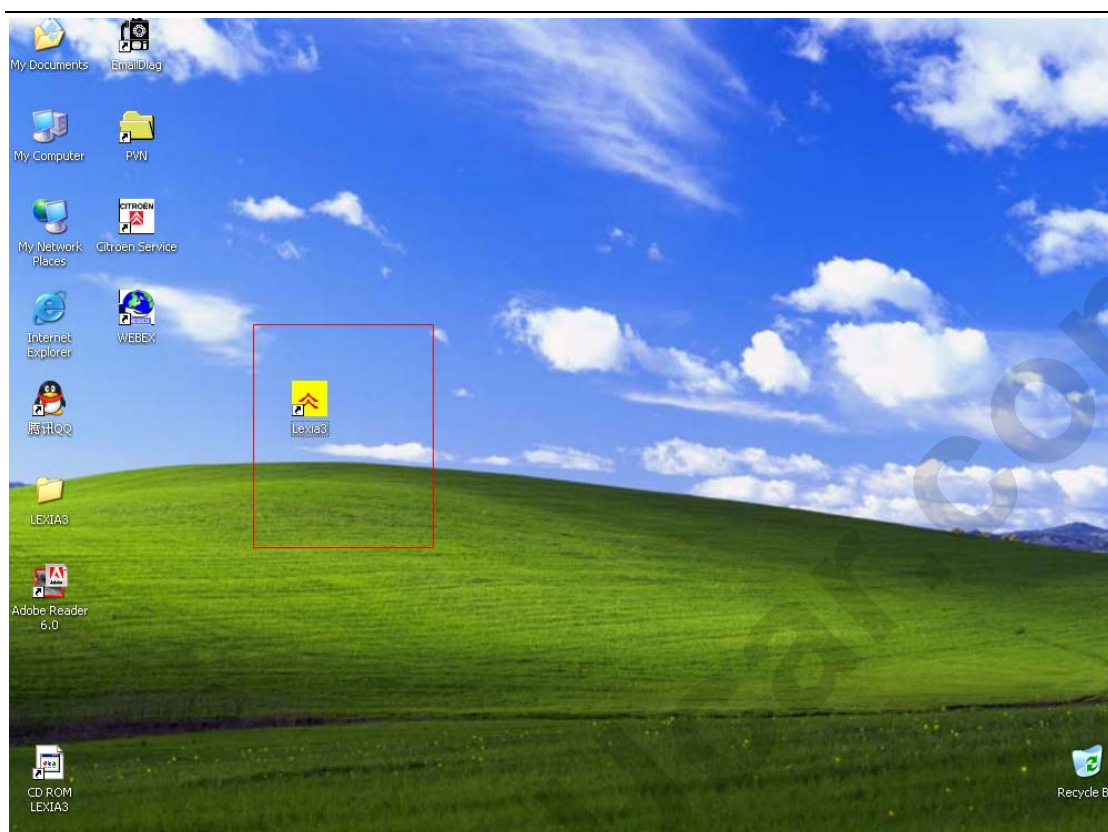
10 安装完成 install finish.



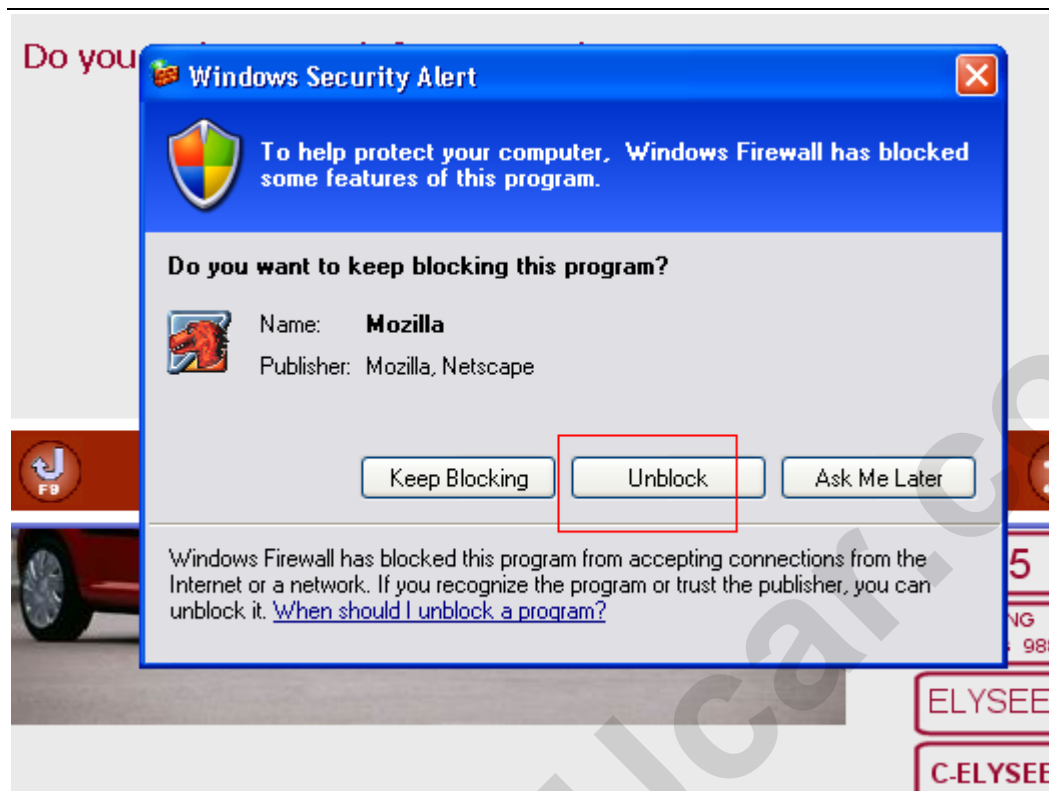
11 把 lexia3 诊断设备连接—车 用短的 usb 线连接电脑【电脑提示安装 usb 驱动】 connect lexia-3 with a car, use the short usb cable connect it to computer[the computer remind you to find usb drive]



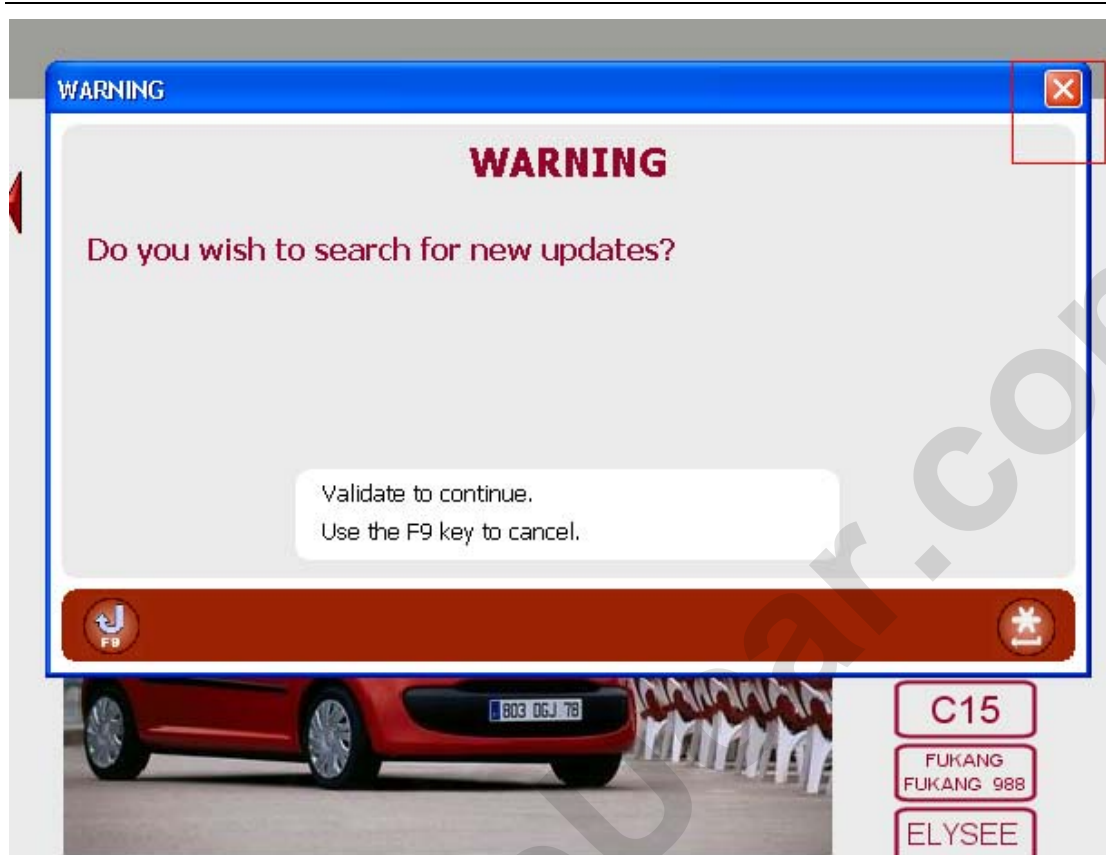
12 打开这段软件开始诊断 open the diagnose software begin diagnose



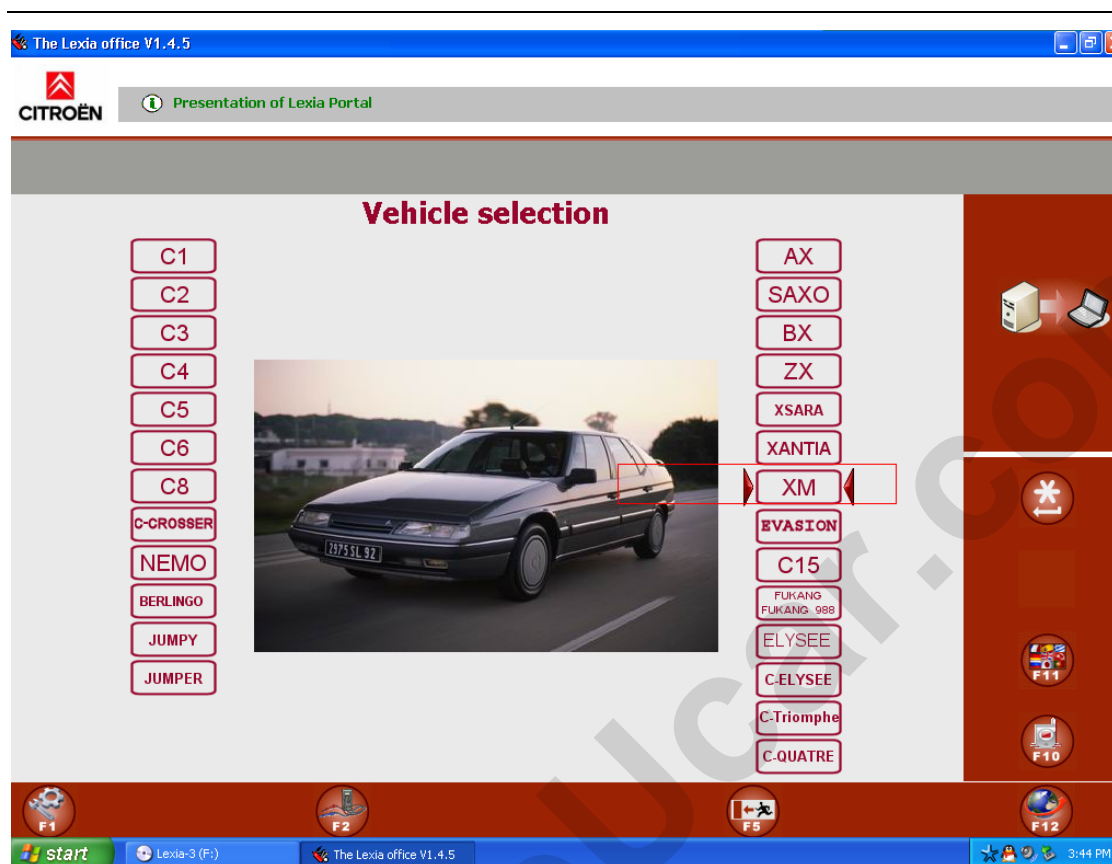
13 选择【unblock】 please choose [unblock]



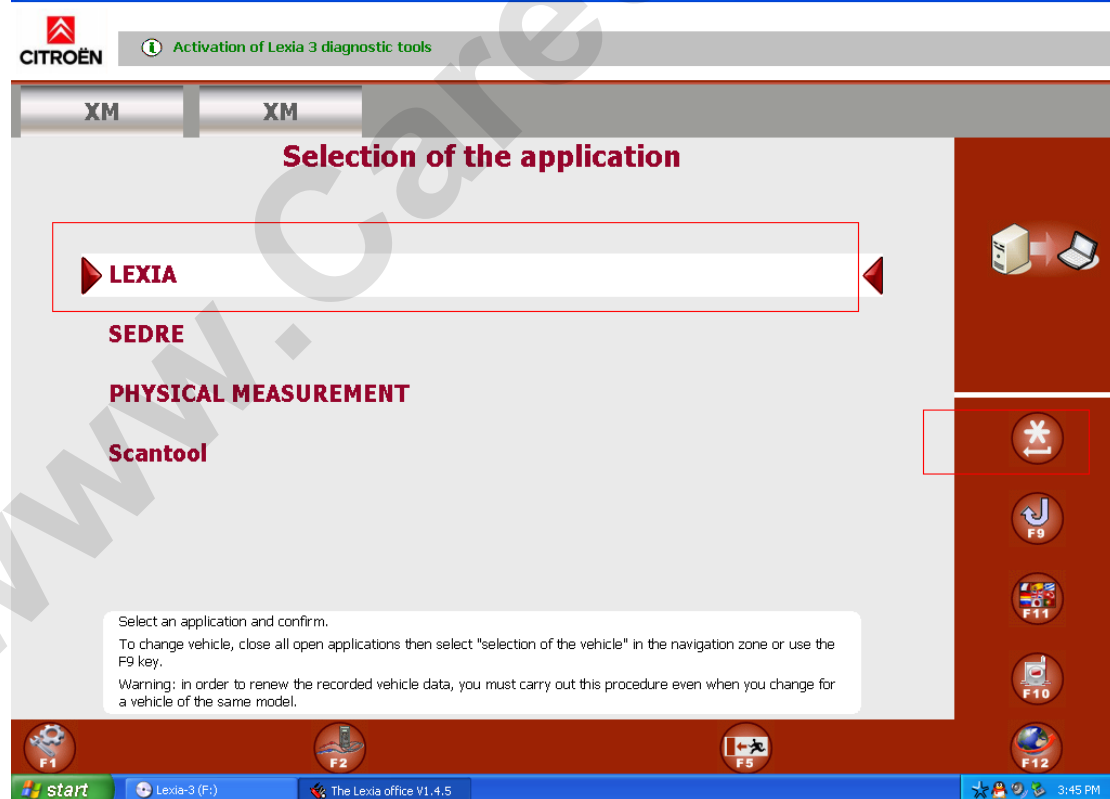
13 关掉升级提示 if it ask you to update, please close it. do not update through internet.



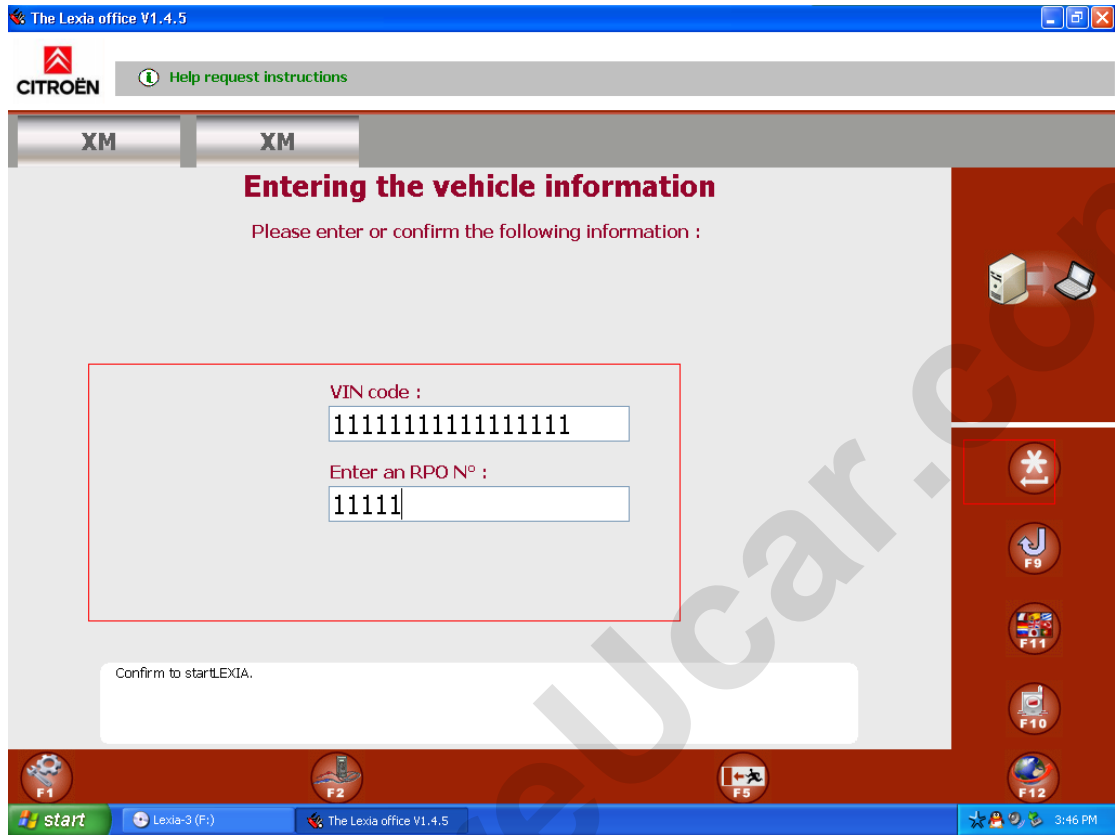
14 选择要诊断的车【演示的车是 XM】Choose the car you are going to diagnose[the car we used to display is XM]



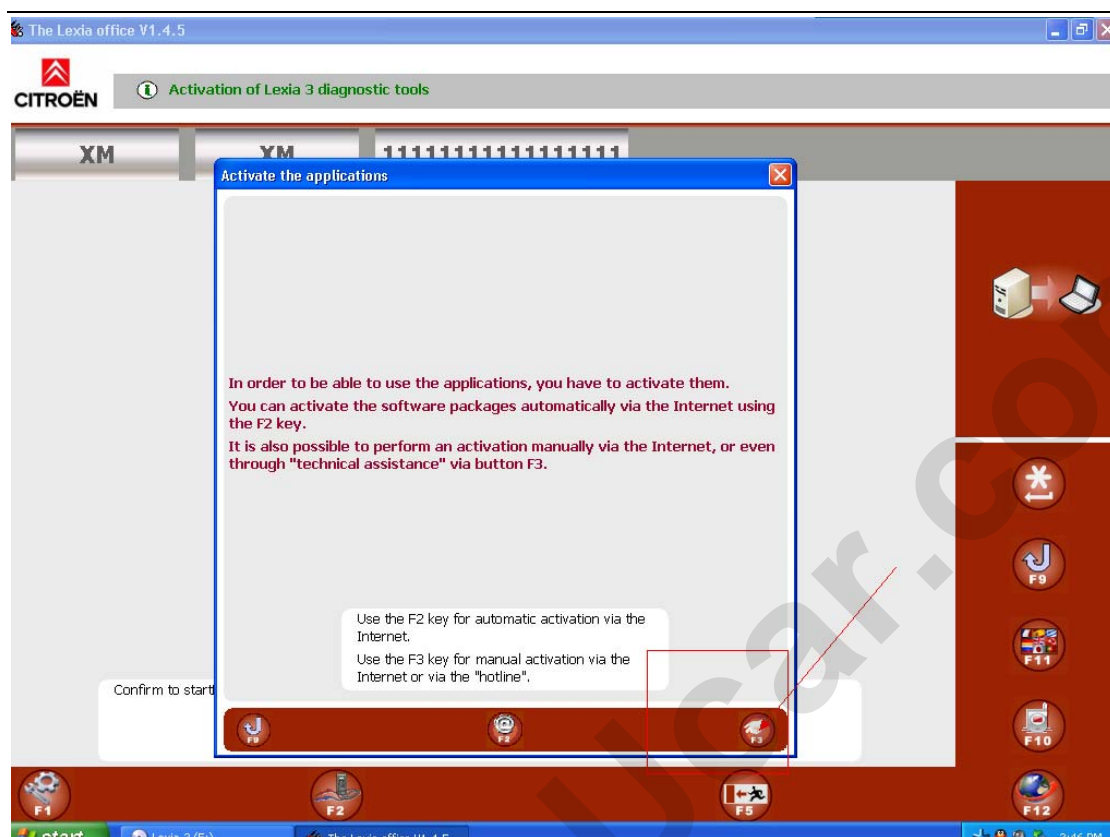
15 选择【xm】 choose [XM]

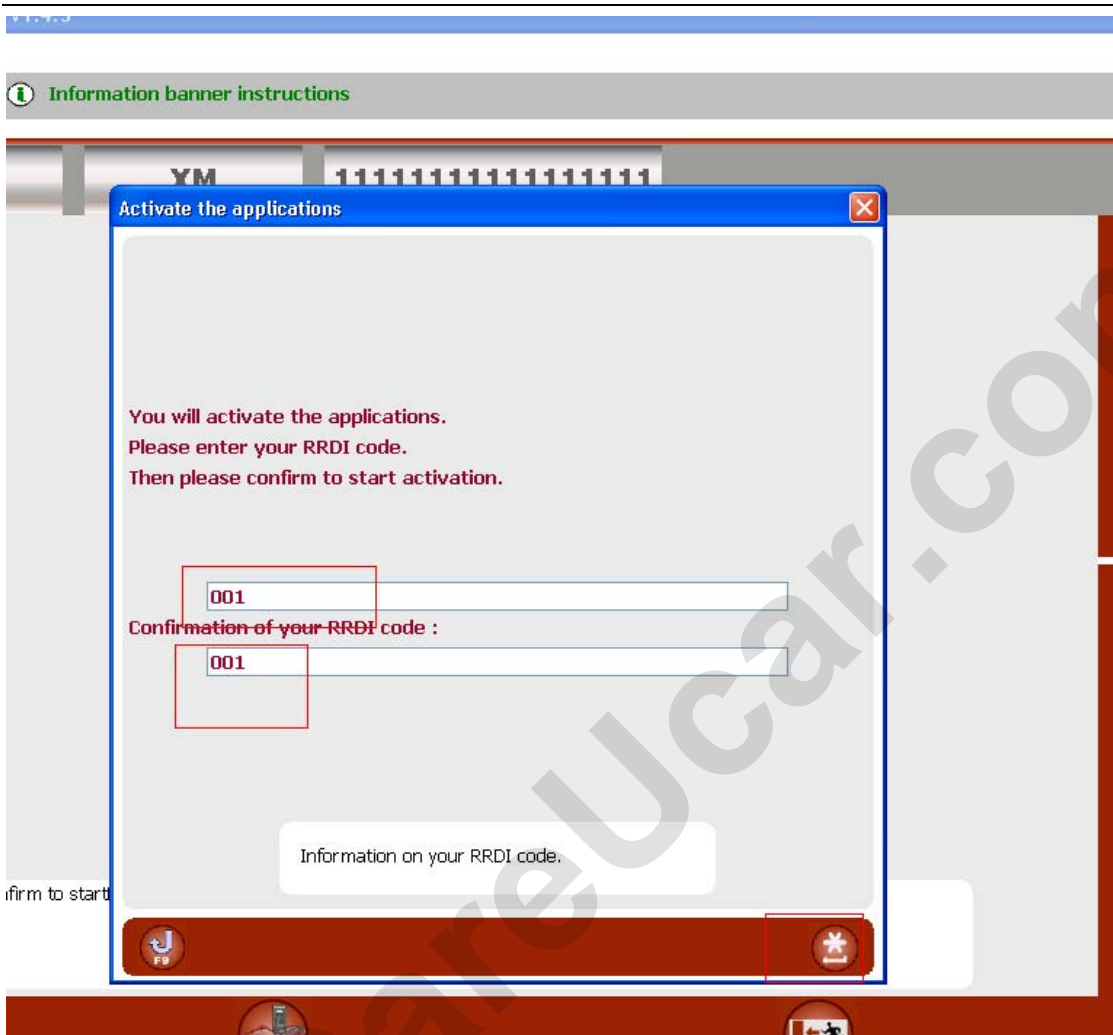


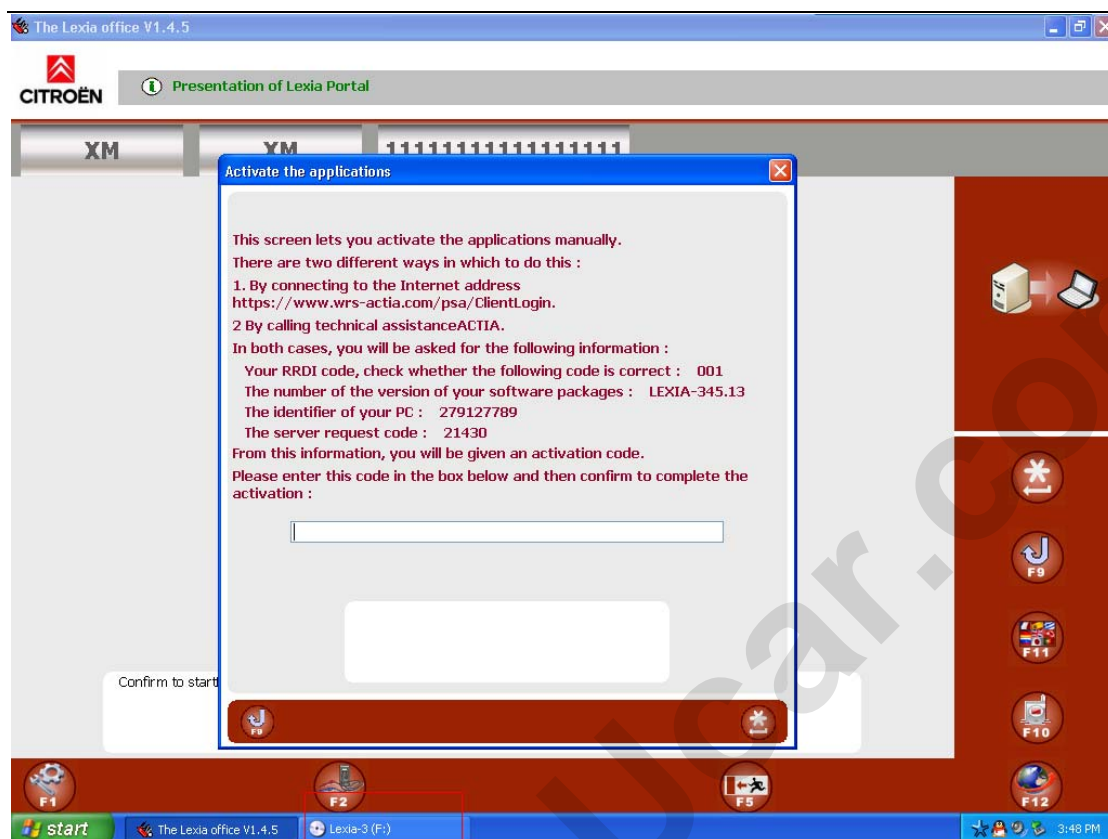
16 填写 vin 码 input vin code(you can input as our pic show)



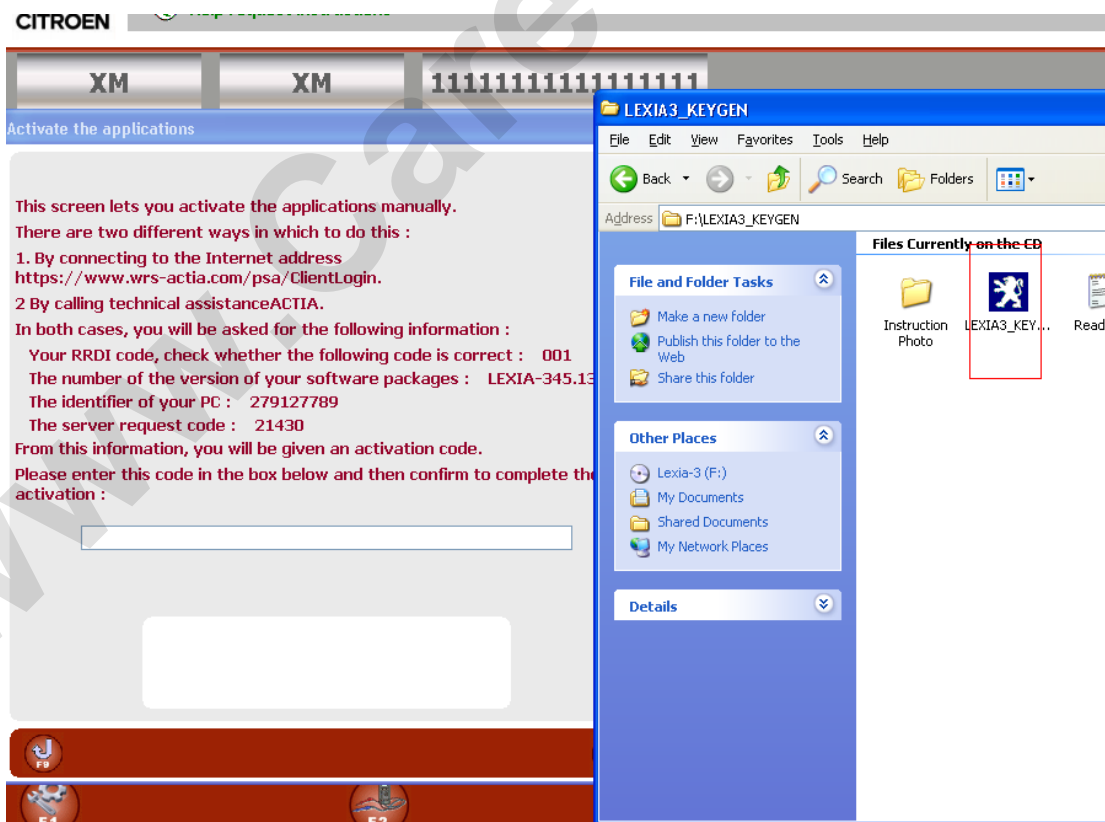
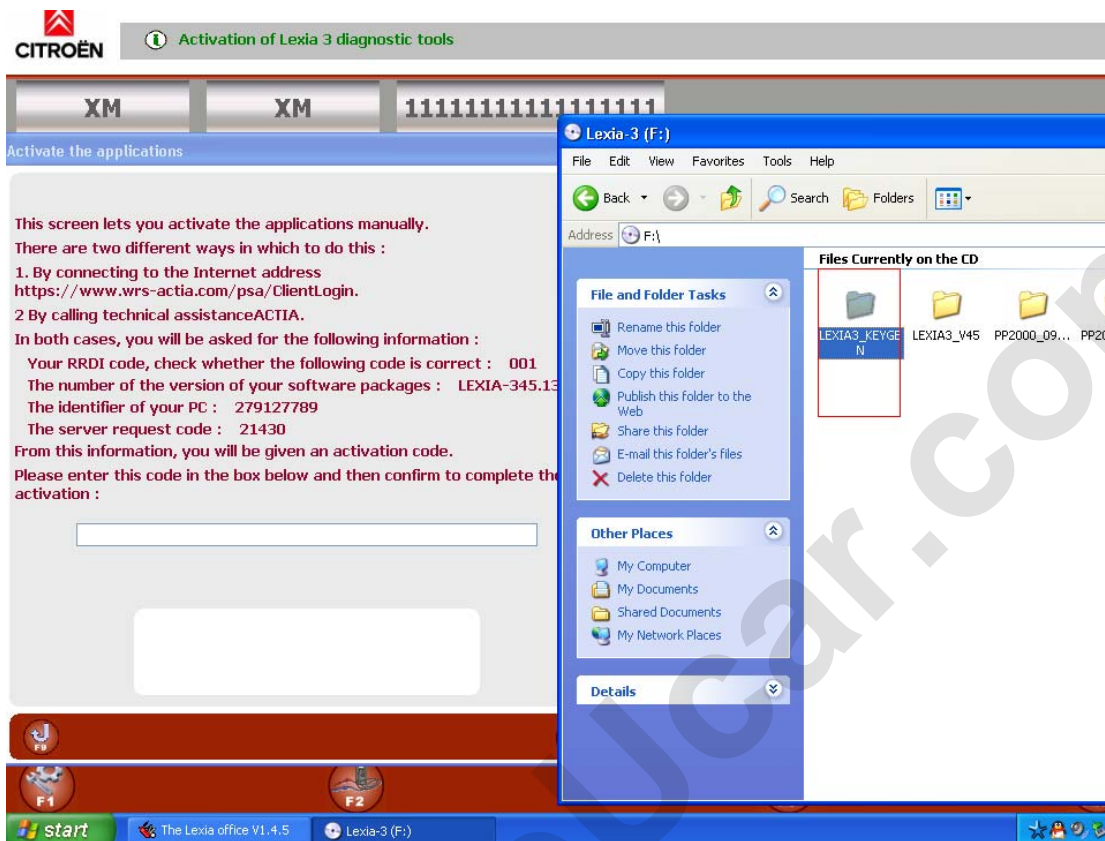
17 选择手动激活 F3 choose manually active F3.



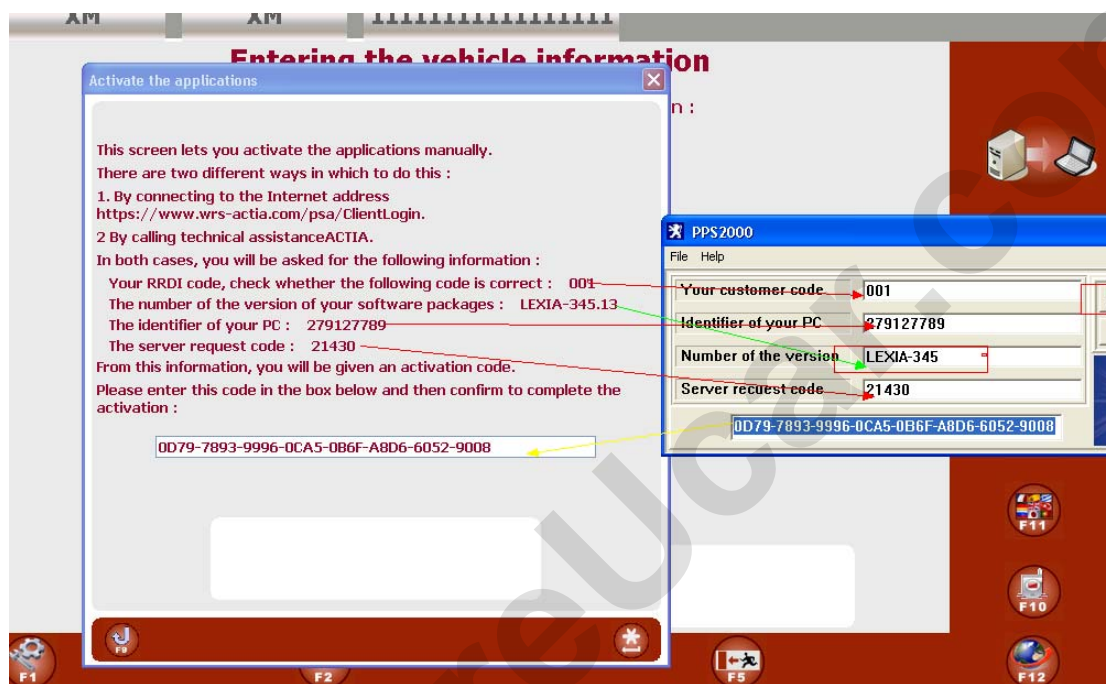


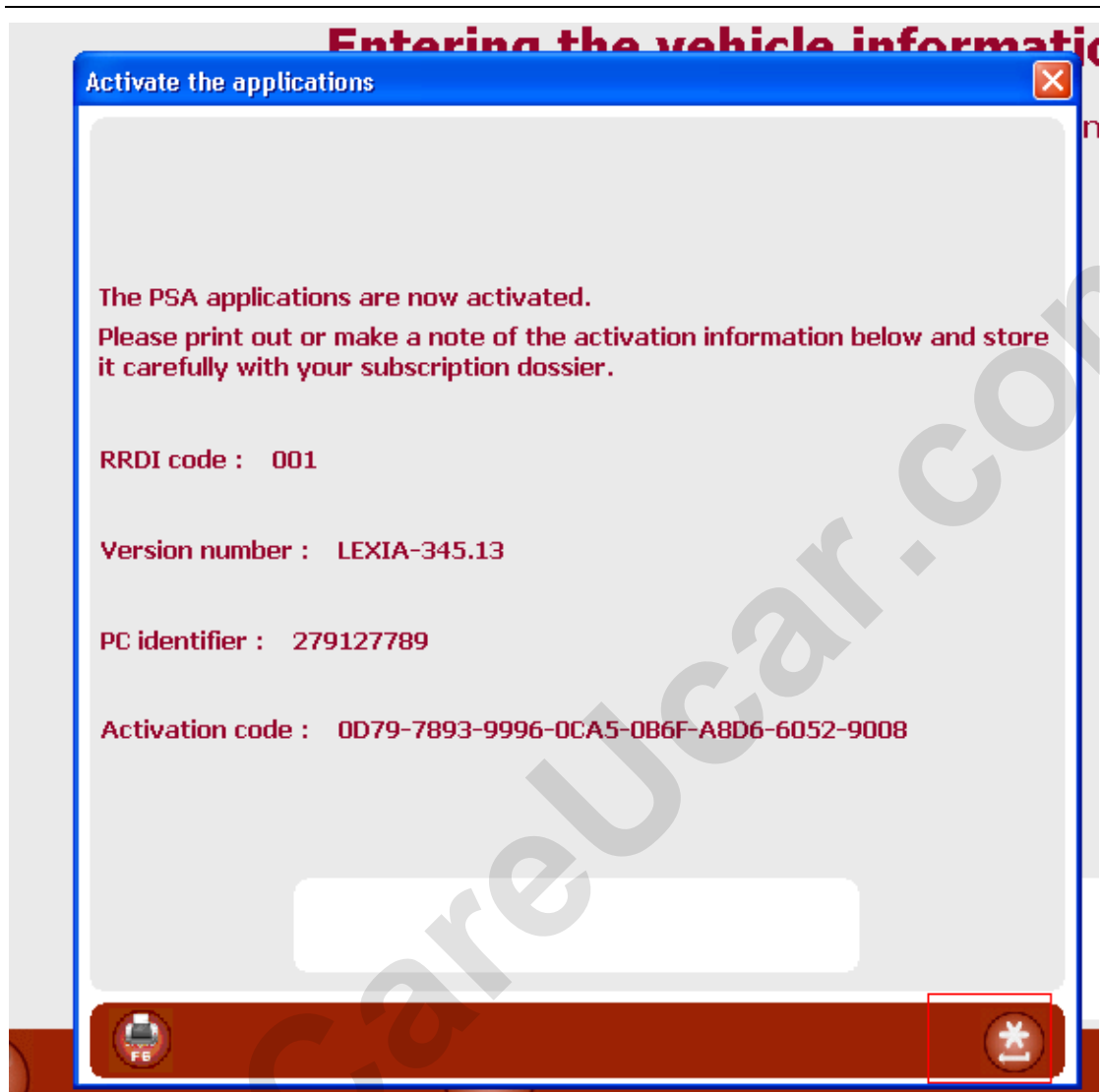


18 打开 CD 激活码计算软件【lexia3keyexe】open CD active code calculate software.

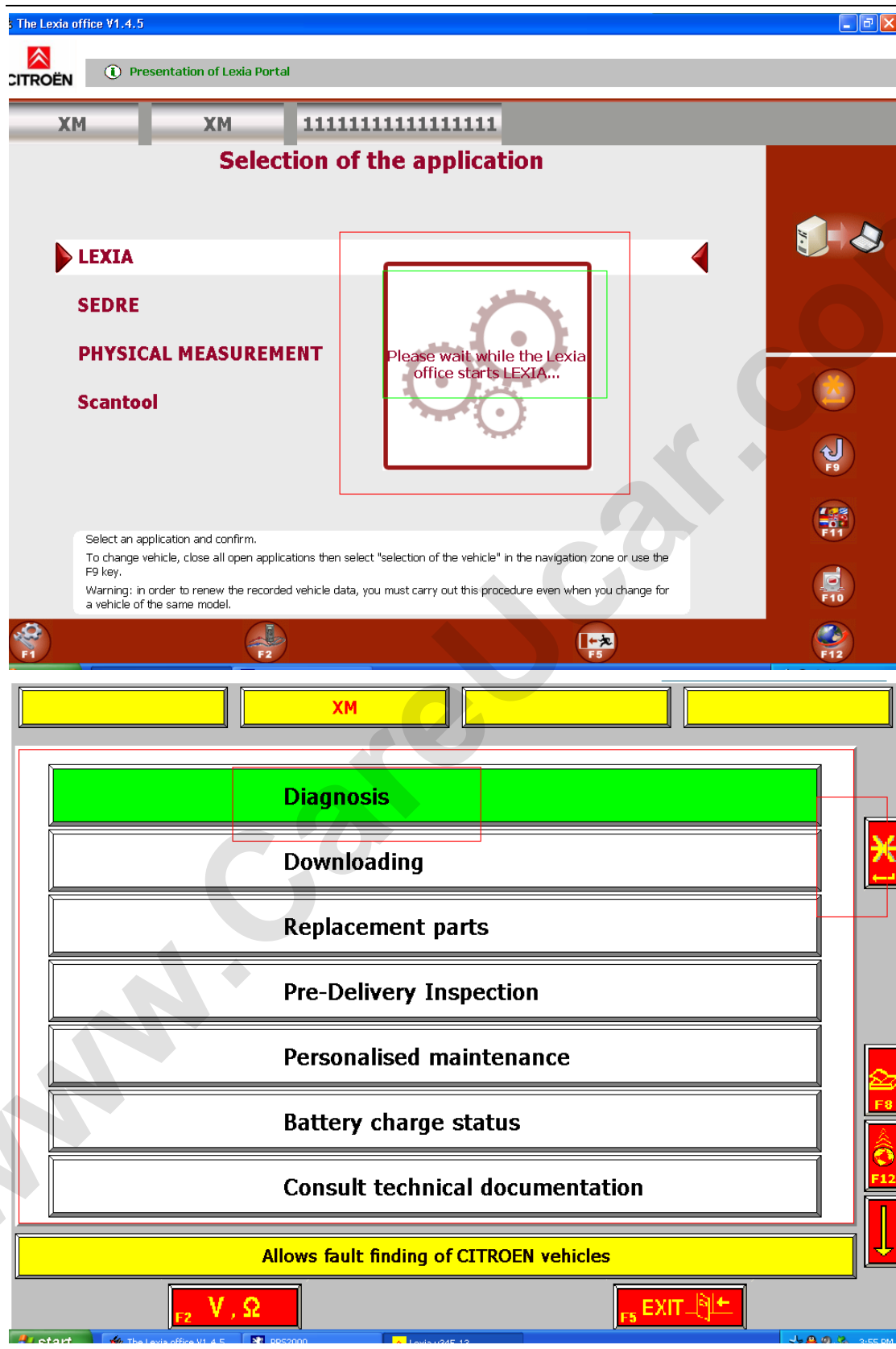


19 把 id 填入计算器中【在填写 lexia-345 的时候不要填写为 lexia-345.13】 input ID into the calculate machine[when write lexia-345 please pay attention, do not write it as lexia-345.13]

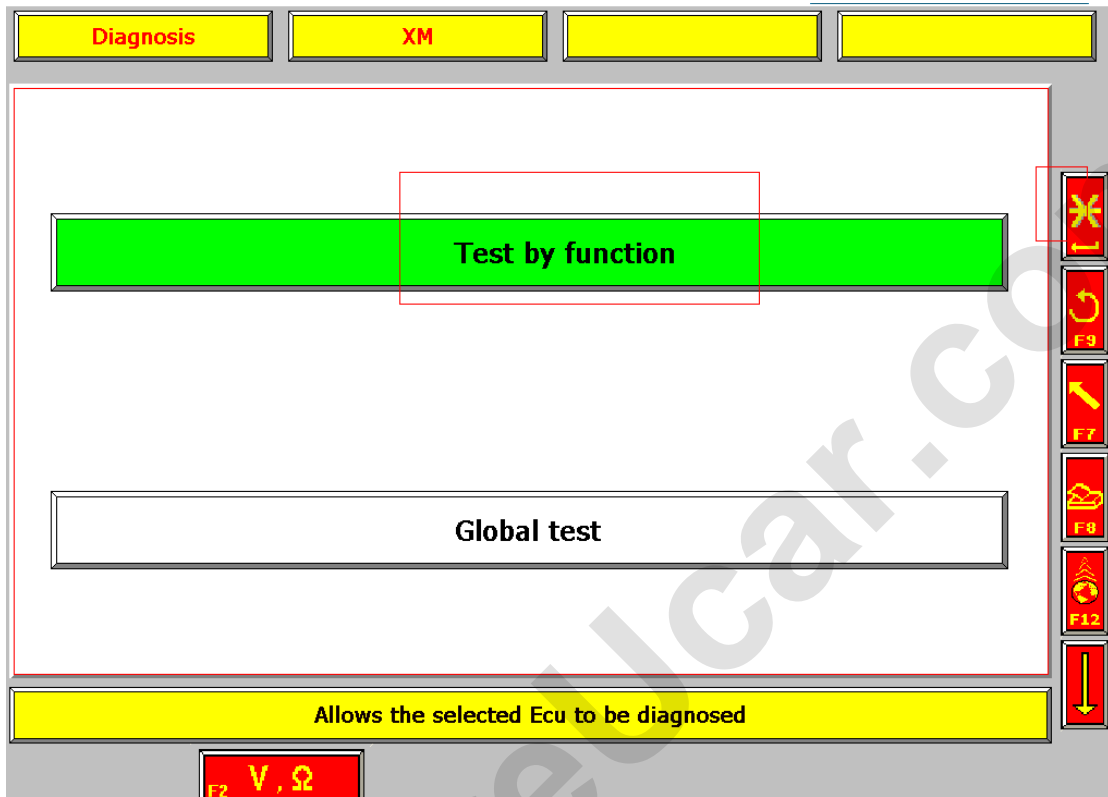


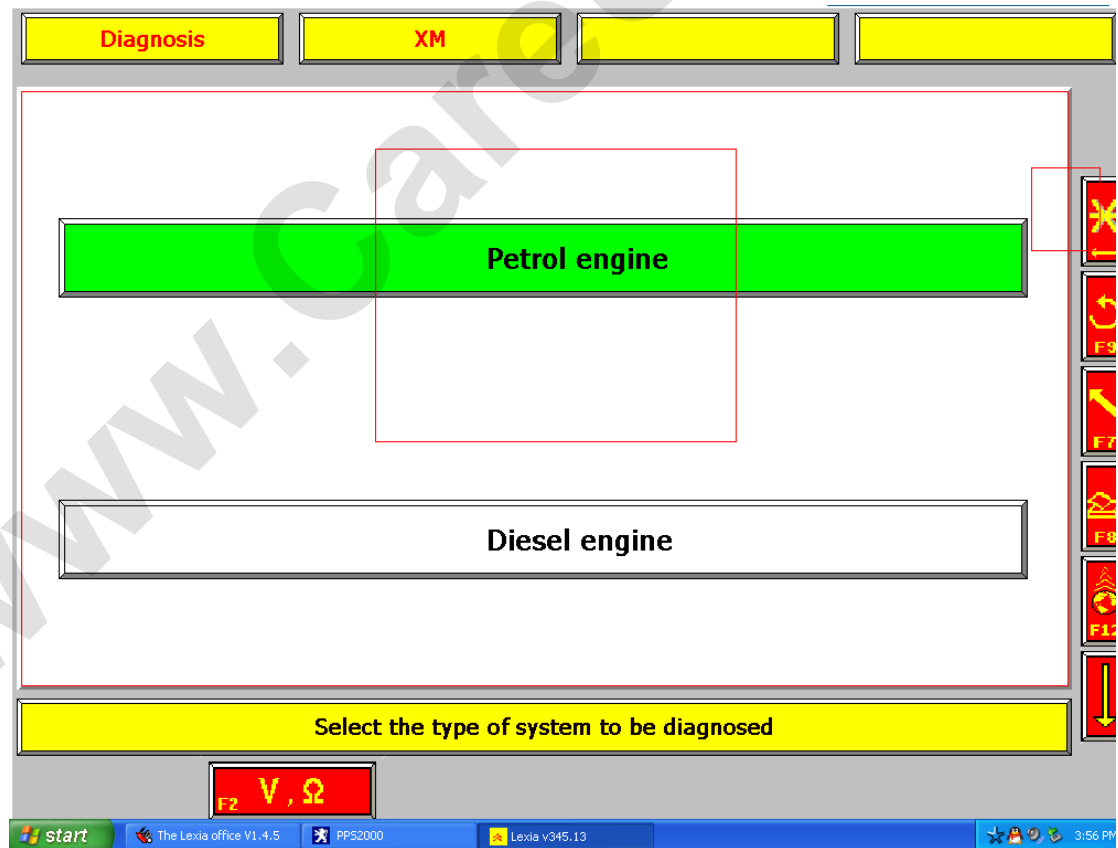
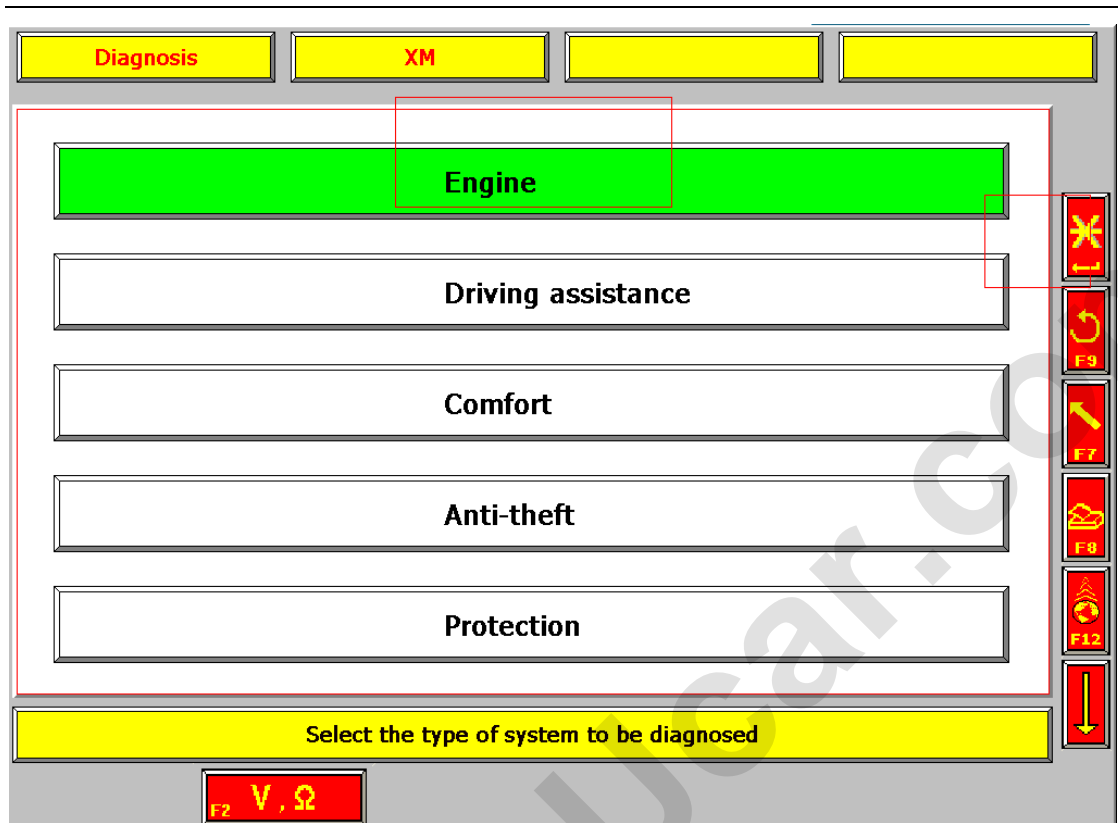


20 激活成功进入诊断 active succeed and then enter diagnose.

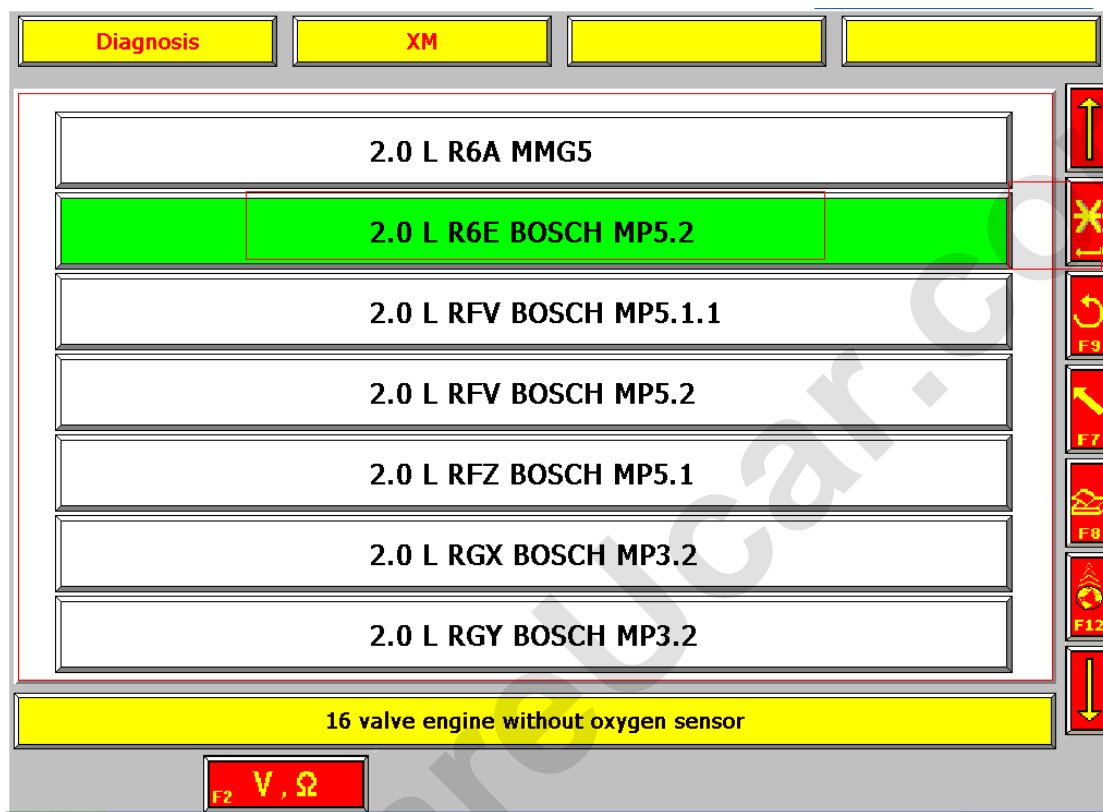


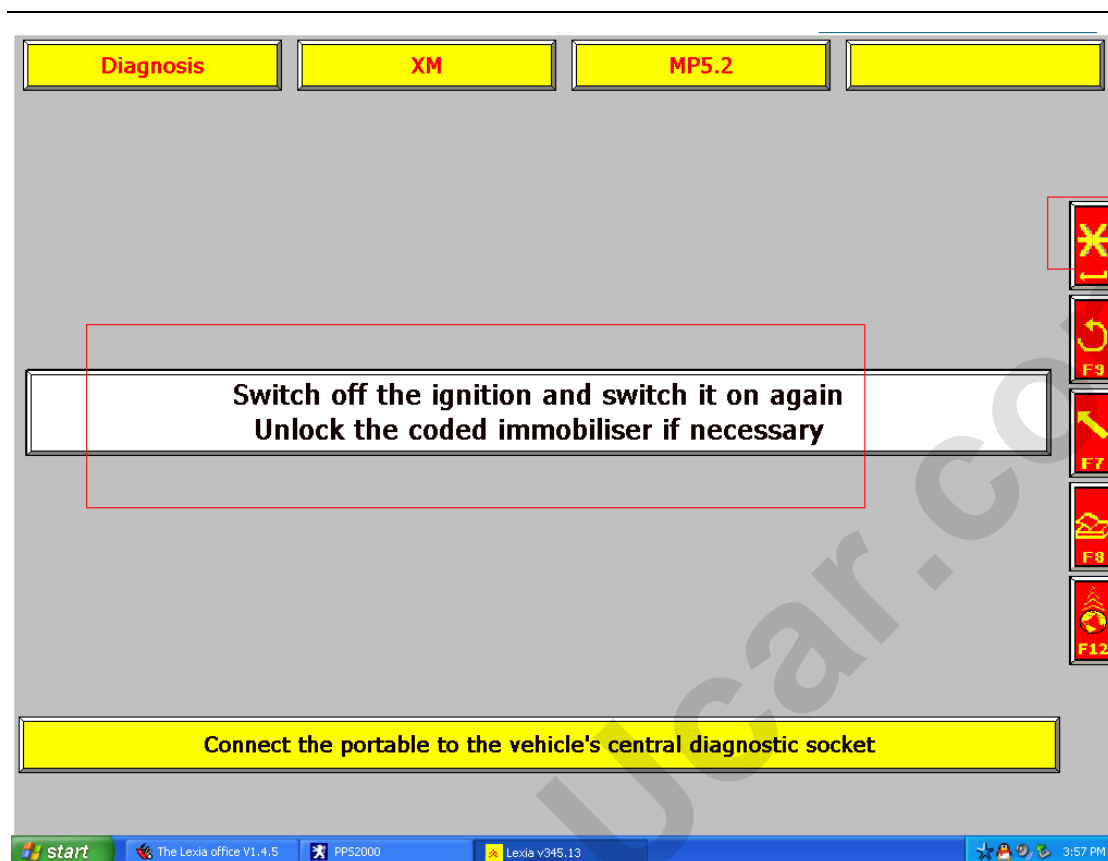
21 选择【test by function】choose [test by function]





22 选择 ecu 的型号【演示的是 2.0r6e bosch】choose ecu type[the one we choose to display is 2.0r6e bosch]





23 ecu 通讯 ok ecu communication ok



