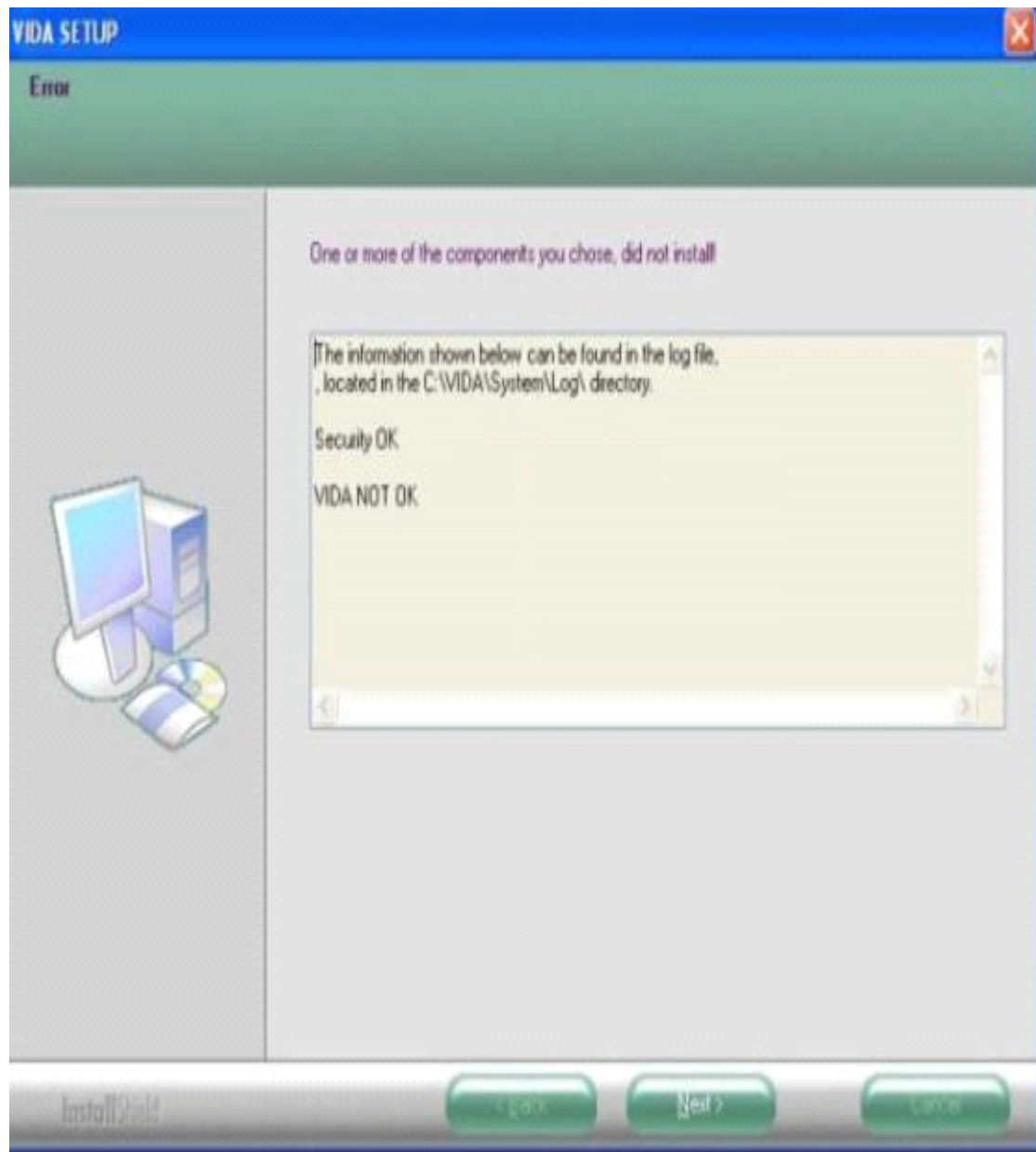


# Volvo Vida Dice FAQ

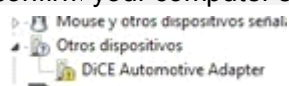
Q: VIDA NOT OK, how to fix?

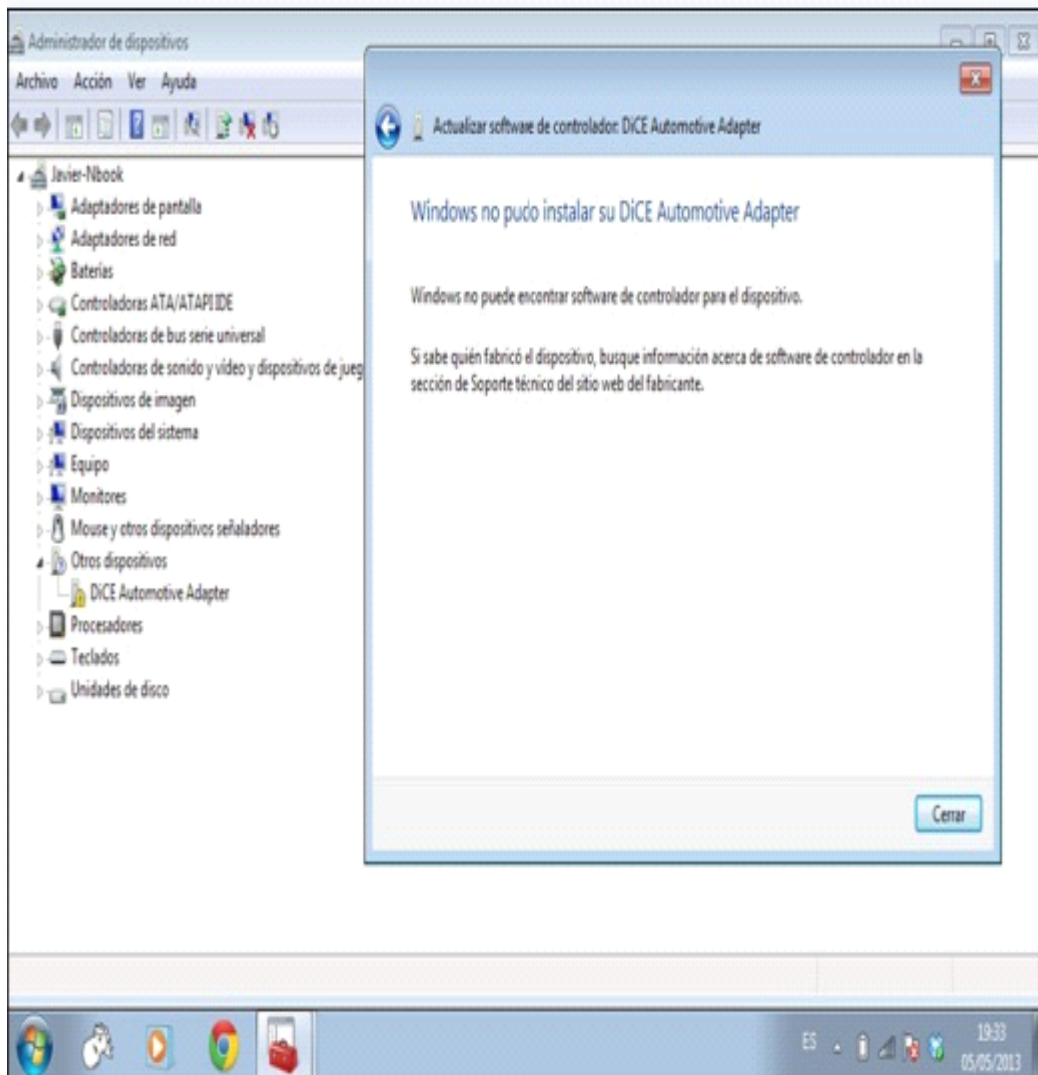


A: Volvo dice 2012D version or later version requires to install on **Win7 64bit** and please carefully read the .txt file **"Read me"** about the computer configuration requirements.

Q: "Windows cannot find driver software for your device"

A: This yellow warning icon says the Dice Driver is not installed successfully. Please confirm your computer system meet the following requirement.





- 1 **Windows 7 professional** operating system
- 2 It need to be **Internet Explorer 8**
- 3 Computer memory need over 3GRAM
- 4 C:// must have 40GB space
- 5 Software must install on C://
- 6 It must be **NTFS format**

Q: when I go VIDA All-in-one after I input the password ADMIN, it does not accept anything.

A: Please install "Vida\_patch", after complete installation, restart the computer, then it will accept.

Q: Does Volvo Dice work with my Volvo 850se 1996 year car?

A: Yes, it does. Generally Speaking, Volvo Dice works with Volvo from 1996 to 2013 year, it depends on the specific car model and Volvo Dice version.

Q: Can I use Volvo Vida 2013A software to run on Mongoose for Volvo Vida Dice Diagnostic Cable?

A: No, you can't.

Q: Does VOLVO DICE support diagnosing Japanese import Volvo S80 2.9 2002?

A: Volvo Vida Dice supports diagnosing for almost all Volvo car models from different regions and countries including Japan, North America, Europe and the rest of the world, but it is uncertain whether Volvo can work with the modified cars.