

ABRITES Commander for Volvo

ABRITES Commander for VOLVO is software for diagnostic of VOLVO vehicles over CAN bus.

Standard diagnostic functions:

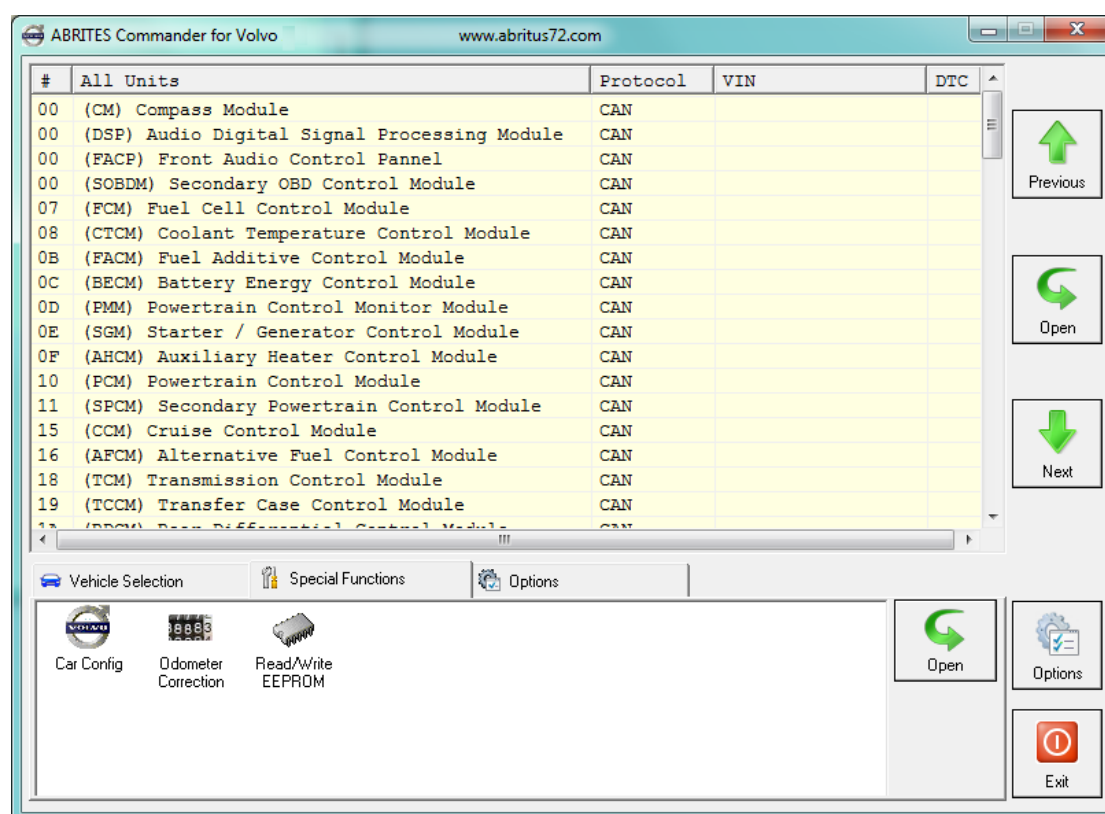
- For all electronic control units reading identification data
- For all electronic control units read error (DTCs)
- For all electronic control units clear error (DTCs)
- Device scan
- Data Display / Measured values

Special functions:

Mileage recalibration by OBDII in instrument cluster and CEM module - S40, V40, V50, S60, S80, V70, S80, XC60, XC70, XC90

Read/program internal EEPROM of the instrument cluster by OBDII - S40, V40, V50, S60, S80, V70, S80, XC60, XC70, XC90

MAIN SCREEN



(IPC) Instrument Panel Cluster Control Module

U1900 "CAN Communication Bus Fault - Receive Error"	Status: 60
No Additional Fault Symptom Available for this DTC	
DTC Present at Time of Request	
MIL Off for this DTC	
Test Complete	
C1750 "Accelerator Position Sensor Out of Range"	Status: 60
No Additional Fault Symptom Available for this DTC	
DTC Present at Time of Request	
MIL Off for this DTC	
Test Complete	
B1202 "Fuel Sender Circuit Open"	Status: 60
No Additional Fault Symptom Available for this DTC	
DTC Present at Time of Request	
MIL Off for this DTC	
Test Complete	
B1681 "PATS Transceiver Module Signal Is Not Received"	Status: 60
No Additional Fault Symptom Available for this DTC	
DTC Present at Time of Request	

Identification Data Display Clear log

Read DTCs Custom Request Write log

Clear DTCs Custom Query Close