

ABRITES Commander for Chrysler, Dodge and Jeep

ABRITES Commander for Chrysler, Dodge and Jeep is a software intended for learning of keys and Mileage Recalibration of these vehicles. Basic diagnostics of all control units, including, but not limited to Engine, Instrument Panel Cluster, Skim, Electronic Transmission Control. Pin code extraction from SKIM dump for older vehicles.

Standard diagnostic functions:

- Connect to the devices using KWP2000 and UDS over ISO transport protocol (CAN)
- For all electronic control units reading identification and extended identification information
- For all electronic control units read errors (DTCs)
- For all electronic control units clear errors (DTCs)
- Output tests
- Control unit adaptations - Seatbelt Warning Enable/Disable, Change mileage display between miles and kilometers and so on
- Actual values display
- Scan all units
- Clear all DTCs

The key learning function works by CAN and J1850. Please, see below the list of supported vehicles. In the next versions we will add more vehicles to this list FREE for all customers who own the key learning function. Since version 2.3 we have added support for J1850 vehicles. Owners of the Chrysler Key Learning special function can read and write the FULL EEPROM of the Immobilizer control unit.

Supported Vehicles for key learning and remote control programming by OBDII ([From here you can download the user manual](#)):

- Chrysler 300 (2006)
- Chrysler 300 (2007)
- Chrysler 300 (2010)
- **Chrysler 300 (2011+) proximity keys**
- Chrysler 300C (2005-2008)
- **Chrysler 300C (2011+) proximity keys**
- Chrysler 300M (-2007)- *Requires J1850 Adaptor*
- Chrysler 300M (2007)
- Chrysler 200 (2012)
- Chrysler Aspen (2007-2009)
- Chrysler PT Cruiser (-2006)- *Requires J1850 Adaptor*
- Chrysler PT Cruiser (2006-2010)
- Chrysler Sebring Convertible (2008)
- Chrysler Sebring (2003-2006)- *Requires J1850 Adaptor*
- Chrysler Sebring (2007-2008)
- Chrysler Sebring Hardtop(2011+)
- Chrysler Sebring Coupe (2011+)
- Chrysler Neon- *Requires J1850 Adaptor*
- Dodge Avenger (2007-2011)
- Dodge Caliber (2007-2011)
- Dodge Caliber (2011+)
- Dodge Caravan (-2007)- *Requires J1850 Adaptor*
- Dodge Caravan (2007-2010)
- Dodge Challenger (2008-2010)
- **Dodge Challenger (2011+) proximity keys**
- Dodge Charger (2006-2010)
- **Dodge Charger (2011+) proximity keys**
- Dodge Dakota (2005-2011)
- Dodge Durango Adv./SLT (2005)
- Dodge Durango (2001-2003)- *Requires J1850 Adaptor*
- Dodge Durango (2004-2009)
- **Dodge Durango (2011+) proximity keys**
- Dodge Grand Caravan Sport- *Requires J1850 Adaptor*
- Dodge Grand Caravan (2008-2009)
- Dodge Intrepid- *Requires J1850 Adaptor*
- Dodge Journey (2009-2011)
- **Dodge Journey (2011+) proximity keys**
- Dodge Magnum (2005)
- Dodge Magnum (2007)
- Dodge Neon (2005)

- Dodge Nitro (2007-2011)
- Dodge Pickup- *Requires J1850 Adaptor*
- Dodge RAM (-2006)- *Requires J1850 Adaptor*
- Dodge RAM 1500 (2006-2011)
- Dodge RAM 2500 (2006-2011)
- Dodge RAM 3500 (2006-2011)
- Dodge RAM (2007-2011)
- **Dodge Ram (2011+) proximity keys**
- Dodge Stratus- *Requires J1850 Adaptor*
- Jeep Commander (2006-2010)
- Jeep Grand Cherokee (2001-2005)- *Requires J1850 Adaptor*
- Jeep Grand Cherokee (2005-2011)
- **Jeep Grand Cherokee (2011+) proximity keys**
- Jeep Liberty (-2007)- *Requires J1850 Adaptor*
- Jeep Liberty (2008-2011)
- Jeep Liberty (2011+)
- Jeep Compass (2007-2010)
- Jeep Compass (2011+)
- Jeep Patriot (2007-2011)
- Jeep Patriot (2011+)
- Jeep Laredo (2007-2011)
- Jeep Wrangler Rubicon (-2007)- *Requires J1850 Adaptor*
- Jeep Wrangler (2007-2011)
- Jeep Wrangler (2011+)
- Plymouth Neon Highline (2001-2005)- *Requires J1850 Adaptor*
- Volkswagen Routan (2009-2012)

Owners of the Chrysler Mileage Recalibration special function can read and write the FULL EEPROM of the Instrument Cluster control unit. Supported Vehicles for Mileage Recalibration by OBDII:

- Dodge Avenger 2007+
- **Dodge Avenger (2011+)**
- Dodge Caravan 2007+
- Dodge Caliber 2007+
- Dodge Charger 2007+
- Dodge Dakota (2004-2006)
- Dodge Durango (2004-2006)
- Dodge Durango 2007+
- **Dodge Durango (2011+)**
- **Dodge Grand Caravan (2011+)**
- Dodge Magnum

- Dodge RAM (2001 - 2006)- *Requires J1850 Adaptor*
- Dodge RAM (2006 - 2012)
- Dodge Nitro
- Dodge Journey
- **Dodge Journey (2011+)**
- Chrysler 300C 2004+
- **Chrysler 300C (2011+)**
- Chrysler 300M - *Requires J1850 Adaptor*
- Chrysler Aspen (2007)
- Chrysler Pacifica (2007)
- Chrysler PT Cruiser (2002-2006) - *Requires J1850 Adaptor*
- Chrysler PT Cruiser (2006 +)
- Chrysler Voyager (-2007) - *Requires J1850 Adaptor*
- Chrysler Voyager 2007+
- Chrysler Town and Country (2007-2010)
- Jeep Commander 2005+
- Jeep Grand Cherokee (2002-2004) - *Requires J1850 Adaptor*
- Jeep Grand Cherokee 2005+
- Jeep Cherokee (2002-2006) - *Requires J1850 Adaptor*
- Jeep Cherokee (2007-2011)
- **Jeep Cherokee (2011+)**
- Jeep Liberty (2007-2010)
- Jeep Patriot (2007-2012)
- Jeep Compass (2007-2009)
- Jeep Wrangler (2007-2012)
- Jeep Laredo (2007-2011)
- Neon (1998-2005) - *Requires J1850 Adaptor*
- Volkswagen Routan (2009-2012)
- Mileage recalibration in Engine Control Unit SRI-3
- Mileage recalibration in Engine Control Unit SRI-4
- Mileage recalibration in Engine Control Unit SRI-5 (2006-2011)
- **Mileage recalibration in Engine Control Units (SRI) all versions (2011+)**
- PCM - EDC15C2 (2000-2005)
- Chrysler Crossfire (1999 with VDO dash)

The special function Engine Control Unit Flasher can be used to read and write the Flash of Engine Control Units (also called Power Control Modules). For EDC15C2 Diesel Engine Control Units the software also supports reading the writing the complete EEPROM. [Supported Engine Control Units](#)

MAIN SCREEN

ABRITES Commander for CHRYSLER, DODGE and JEEP 2.5 www.abritus72.com

#	Unit name	Protocol	DTC
01	Motor Electronics	CAN	
02	Immobilizer	CAN	
03	Instrument Cluster/Cabin Compartment Node	CAN	
04	Electronic Transmission Control	CAN	
05	Electronic Shift Solenoid Program	CAN	
06	PSD - Right		
07	Sunroof Modu		
08	TPM		
09	Steering Col		
10	Airbag		
11	Electronic O		
12	Amplifier		
13	Electronic S		
14	Hands free m		
15	Central Gate		
16	Radio		
17	Drivers Door		
18	Passengers D		
19	Heat Ventila		

About ABRITES Commander for CHRYSLER, DODGE and JEEP

ABRITES Commander for CHRYSLER, DODGE and JEEP
Version: 2.5 ID:170002
by Abritus72 Ltd.



www.abritus72.com

ABRITES
automotive solutions

OK



Vehicle Selection | Special Functions | Options

Chassis: **Dodge** | Model: **Challenger (2008-2010)** | Engine: **Gasoline**

 Scan All
  Clear All DTCs

Vehicle Selection

#	Vehicle	Year	Part Number
01	AUTODETECT	----	-----
03	Chrysler 300	2006	56038665AW
05	Chrysler 300	2006	56038665AU
16	Chrysler 300	2007	05026180AE
77	Chrysler 300	2006	56040542AP
90	Chrysler 300	2010	05026366AL
08	Chrysler 300C	2006	56040542AM
23	Chrysler 300C	2007	05026182AE
63	Chrysler 300C	2008	05026296AE
64	Chrysler 300C	2008	05026296AD
72	Chrysler 300C	2006	56040542AO
73	Chrysler 300C	2005	56040542AN
80	Chrysler 300C	2005	56038665AS
81	Chrysler 300C	2005	56038665AR
19	Chrysler 300M	2007	05026182AE
11	Chrysler Aspen	2007	05026176AE
21	Chrysler Aspen	2007	05026173AF
27	Chrysler PT Cruiser	2008	05026218AK
31	Chrysler PT Cruiser	2008	05026218AN
38	Chrysler PT Cruiser	2006	56040680AJ
26	Chrysler Sebring	2008	05026157AN
28	Chrysler Sebring	2007	05026157AI
29	Chrysler Sebring	2008	05026157AM

 Select
  Cancel

Engine Control Unit - Special Functions

ECU Type: **EDC 16+ CP31** ECU type help

```

001DB220 00 00 00 32 00 64 00 64 00 64 00 4B 00 32 00 19 ...2.d.d.d.K.2..
001DB230 00 00 00 00 00 00 00 00 00 00 00 00 00 00 00 ...L.....
001DB240 00 10 03 20 03 E8 04 4C 04 E2 05 DC 06 D6 07 D0 .....L.....
001DB250 08 CA 09 C4 0A BE 0B B8 0C B2 0D AC 0E A6 0F A0 .....
001DB260 10 68 00 10 00 00 00 C8 01 F4 02 EE 03 E8 04 E2 .h.....
001DB270 05 DC 06 D6 07 D0 09 C4 0B B8 0D AC 0F A0 11 94 .....
001DB280 13 88 15 7C 00 00 00 32 00 64 00 71 00 7D 00 8A ...|...2.d.q)...
001DB290 00 96 00 96 00 96 00 96 00 96 00 8A 00 7D 00 7D .....})
001DB2A0 00 7D 00 64 00 00 00 26 00 4B 00 58 00 64 00 64 .).d...&.K.X.d.d
001DB2B0 00 64 00 64 00 64 00 64 00 64 00 58 00 4B 00 4B .d.d.d.d.d.X.K.K
001DB2C0 00 4B 00 64 00 00 00 26 00 4B 00 58 00 64 00 64 .K.d...&.K.X.d.d
001DB2D0 00 64 00 64 00 64 00 64 00 64 00 58 00 4B 00 4B .d.d.d.d.d.X.K.K
001DB2E0 00 4B 00 64 00 00 00 26 00 4B 00 58 00 64 00 64 .K.d...&.K.X.d.d
001DB2F0 00 64 00 64 00 64 00 64 00 64 00 4B 00 32 00 32 .d.d.d.d.d.K.2.2
001DB300 00 32 00 5A 00 00 00 26 00 4B 00 58 00 64 00 64 .2.Z...&.K.X.d.d
001DB310 00 64 00 64 00 64 00 64 00 64 00 3F 00 19 00 19 .d.d.d.d.d.?....
001DB320 00 00 00 19 00 00 00 19 00 32 00 3F 00 4B 00 58 .....2.?.K.X
001DB330 00 64 00 64 00 64 00 58 00 4B 00 26 00 00 00 00 .d.d.d.X.K.&....
001DB340 00 00 00 00 00 00 0D 00 19 00 26 00 32 00 32 .....&.2.2
001DB350 00 32 00 32 00 32 00 32 00 32 00 19 00 00 00 .2.2.2.2.....
001DB360 00 00 00 00 00 00 0D 00 19 00 26 00 32 00 32 .....&.2.2
001DB370 00 32 00 32 00 32 00 32 00 32 00 19 00 00 00 .2.2.2.2.....
001DB380 00 00 00 00 00 00 0D 00 19 00 26 00 32 00 32 .....&.2.2
001DB390 00 32 00 32 00 32 00 32 00 32 00 19 00 00 00 .2.2.2.2.....
001DB3A0 00 00 00 00 00 00 00 00 0D 00 19 00 26 .....&
001DB3B0 00 32 00 32 00 32 00 32 00 32 00 19 00 00 00 .2.2.2.2.....

```

Read EEPROM
Write to EEPROM
Read Flash
Write Flash
Save to File...
Load from File...
Exit

Custom Memory Download / Upload

Type: Instrument Cluster Dodge RAM (2006 - 2010)

```

Instrument Cluster Dodge RAM (2006 - 2010)
Instrument Cluster Dodge RAM (2010 - )
Instrument Cluster Dodge Avenger, Dodge Caliber (2007 - ), Dodge Charger
Instrument Cluster Dodge Journey, Jeep Laredo
Instrument Cluster Dodge Nitro
Instrument Cluster Chrysler PT Cruiser (2006 - ) Ver. 1
Instrument Cluster Chrysler PT Cruiser (2006 - ) Ver. 2
Instrument Cluster Jeep Cherokee (2007 - ), Jeep Liberty (2007 - ), Version-1
Instrument Cluster Jeep Cherokee (2008 - ), Jeep Liberty (2008 - ), Version-2
Instrument Cluster Jeep Commander (2005 - )
Instrument Cluster Jeep Grand Cherokee (2005 - )
Instrument Cluster Jeep Patriot
Instrument Cluster Jeep Compass
Instrument Cluster Jeep Wrangler (2007)
Instrument Cluster Jeep Wrangler (2008-2010)
Instrument Cluster VDO 1998-2002 (Chrysler Crossfire)
Instrument Cluster Jeep Cherokee (2002-2006)
Instrument Cluster Neon (1999-2002)
Instrument Cluster Neon (2003-2005)
Instrument Cluster Jeep Grand Cherokee (2002-2004)
Instrument Cluster Chrysler PT Cruiser ( -2000 )
Instrument Cluster Chrysler PT Cruiser ( 2001- )
Instrument Cluster Voyager (2001-2007)

```

Read EEPROM
Write EEPROM
Save to file
Load from file

Connection: St. 0
Len. of Req. 2
Total Size 1000
Step 20
Encryption

Download / Upload
 Read / Write Memory

Diag Session Session 85

Exit

Vehicle Selection

Main odometer in dashboard	Main odometer in dashboard	Main odometer in dashboard
<input type="radio"/> Dodge Avenger (2007 -)	<input type="radio"/> Chrysler PT Cruiser Ver.1 (2006 -)	<input type="radio"/> 300M (1999-2004)
<input type="radio"/> Dodge Caliber (2007 -)	<input type="radio"/> Jeep Commander (2005 -)	<input type="radio"/> PT Cruiser (-2000)
<input type="radio"/> Dodge Charger (2007 -)	<input type="radio"/> Jeep Grand Cherokee (2005 -)	<input type="radio"/> PT Cruiser (2001-)
<input type="radio"/> Dodge Caravan (2007 -)	<input type="radio"/> Jeep Cherokee, Jeep Liberty Ver.1 (2007 -)	<input checked="" type="radio"/> Voyager (2000-2007)
<input type="radio"/> Dodge Dakota (2004-2006)	<input type="radio"/> Jeep Cherokee, Jeep Liberty Ver.2 (2008 -)	
<input type="radio"/> Dodge Durango (2004-2006)	<input type="radio"/> Jeep Compass	
<input type="radio"/> Dodge Durango (2007 -)	<input type="radio"/> Jeep Patriot	
<input type="radio"/> Dodge Magnum	<input type="radio"/> Jeep Wrangler (2007 -)	
<input type="radio"/> Dodge RAM (2006 - 2010)	<input type="radio"/> Volkswagen Routan	
<input type="radio"/> Dodge RAM (2010 -)	<input type="radio"/> Chrysler Crossfire (1999) VDO dashboard	
<input type="radio"/> Dodge Nitro	<input type="radio"/> SRI-3, SRI-4 (Engine Control Unit)	
<input type="radio"/> Dodge Journey / JEEP Laredo	<input type="radio"/> SRI-5 (Engine Control Unit)	
<input type="radio"/> Chrysler 300C (2004 -)	<input type="radio"/> EDC15C2 (Engine Control Unit)	
<input type="radio"/> Chrysler Aspen (2007)	<input type="radio"/> Jeep Cherokee / Jeep Liberty (2002-2006)	
<input type="radio"/> Chrysler Pacifica (2007)	<input type="radio"/> Jeep Grand Cherokee (2002-2004)	
<input type="radio"/> Chrysler Voyager (2007 -)	<input type="radio"/> Neon (- 2002)	
<input type="radio"/> Chrysler Town and Country (2007 -)	<input type="radio"/> Neon (2003 -)	
<input type="radio"/> Chrysler PT Cruiser Ver.2 (2006 -)	<input type="radio"/> Dodge RAM (2001-2006)	

SKIM

Establishing a diagnostic session with the selected unit
Diagnostic channel is open.

--- electronic control unit identification ---

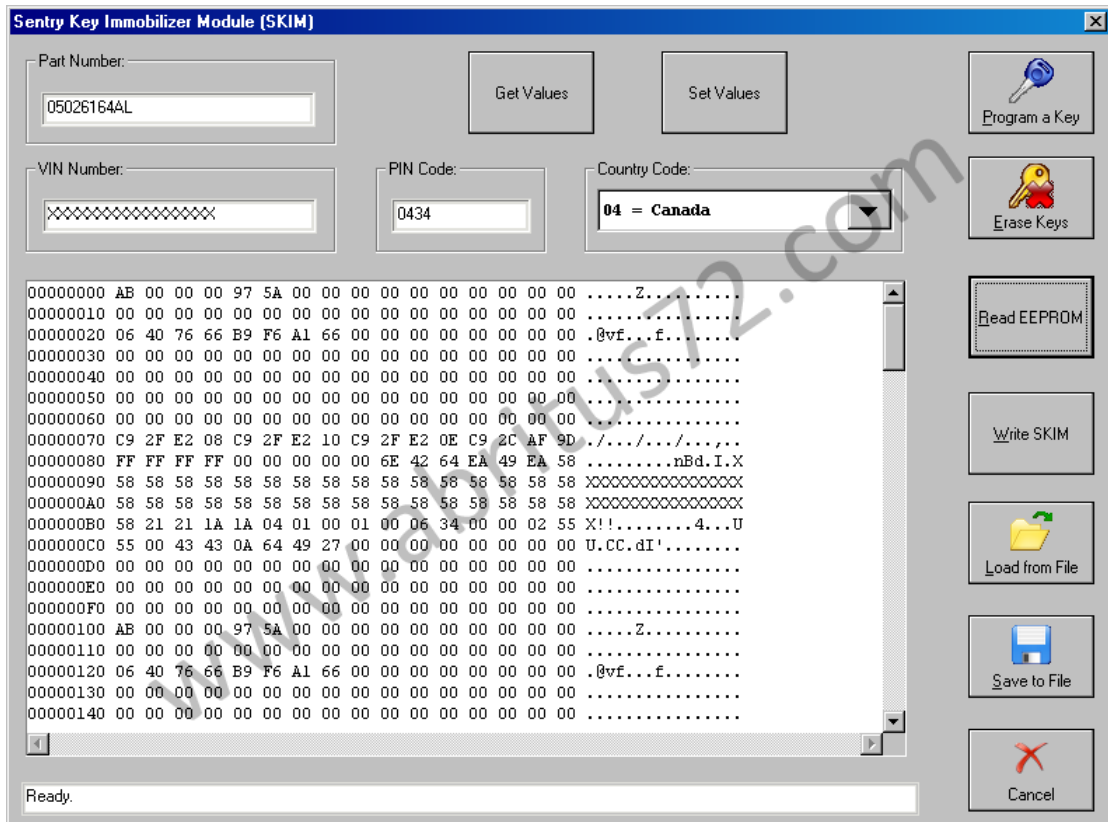
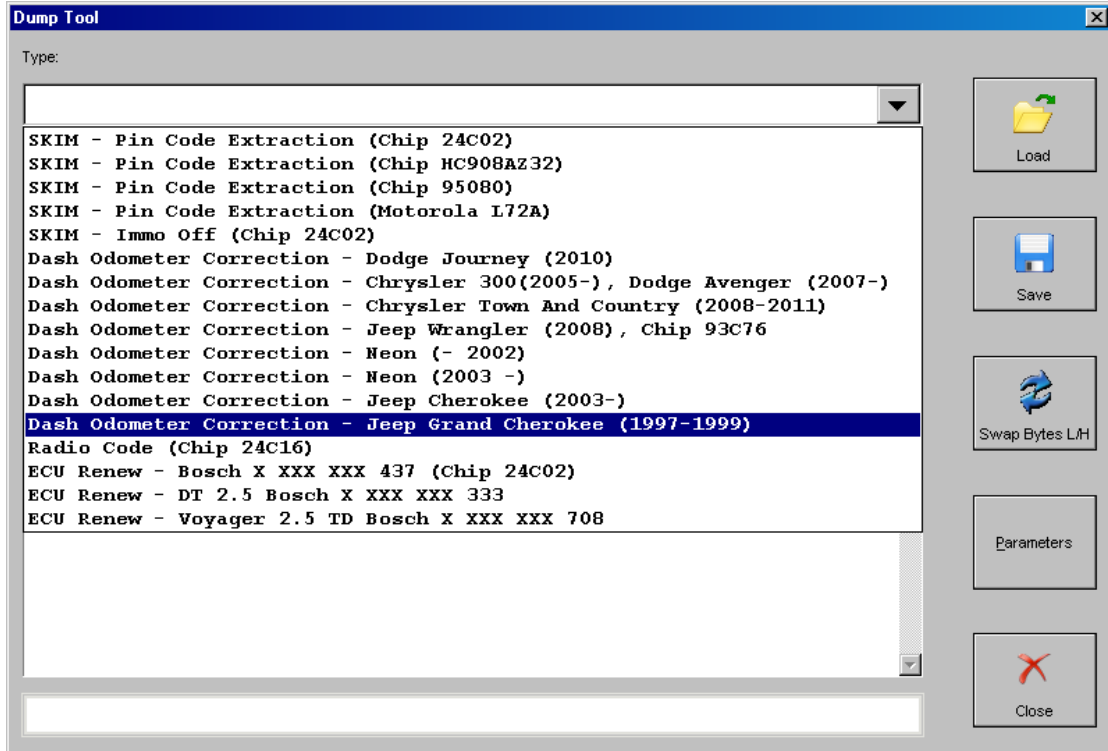
Chrysler No. : 05026164AL
ECU Origin : DCX
Supplier : OMRON
Hardware Version : 36 / 0c
Software Version : 28 / 05

Fault Codes
=====

B2204 Ecu Configuration Mismatch
B2205 Original VIN missing/mismatch
B2206 Current VIN missing/mismatch

All DTCs successfully cleared


ABRITES automotive solutions




ABRITES Commander for CHRYSLER, DODGE and JEEP 2.5 www.abritus72.com

#	Unit name	Protocol	DTC
01	Motor Electronics	CAN	
02	Immobilizer	CAN	
03	Instrument Cluster/Cabin Compartment Node	CAN	
04	Electronic Transmission Control	CAN	
05	Electronic Stability Program	CAN	
06	PSD - Right	CAN	
07	Sunroof Module	CAN	
08	TPM	CAN	
09	Steering Column Module	CAN	
10	Airbag	CAN	
11	Electronic Overhead Module	CAN	
12	Amplifier	CAN	
13	Electronic Shifter Module	CAN	
14	Hands free module (cell phone)	CAN	
15	Central Gateway / Front Control Module	CAN	
16	Radio	CAN	
17	Drivers Door Module	CAN	
18	Passengers Door Module	CAN	
19	Heat Ventilation & A/C	CAN	


Vehicle Selection | Special Functions | Options




Odometer
Correction




Read/Write
EEPROM




Dump Tool



ECU Flasher



Immobilizer
(SKIM)



Radio Codes

Previous

Open

Next

Open