

KESS V2 (SE87) FAQ

About installation and usage

Q: Where to download KESS V2 driver?

A: <http://www.chinaautodiag.com/download/kess-v2.zip>

Q: When KESS V2 read ECU, I got checksum error.

A: Please search “visual C++ 2005 library” on Google, then download it and install it, this error will be solved.

Q(1): How does KESS V2 checksums work? Does KESS V2 automatically confirm and rewrite? Does KESS v2 work with truck? Such as: Mercedes MP1/MP2/MP3 or MAN TGA.

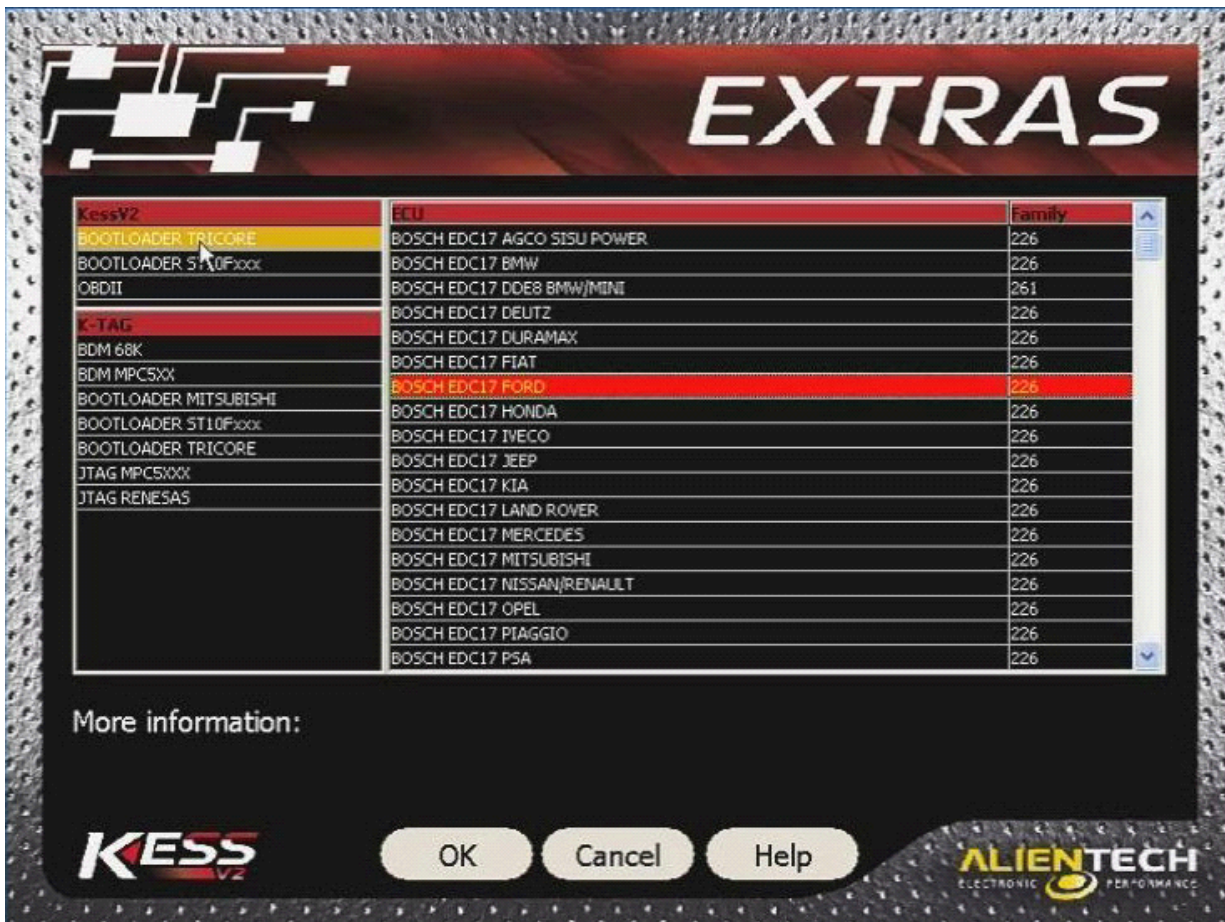
A (2): After reading the software, kess v2 will automatically calibrate checksums. KESS V2 doesn't work with truck, because the truck voltage is too high and KESS V2 will be burnt out.

Q (2): Then K-tag work with truck?

A (2): Yes, it does.

Q: How to connect KESS V2 to K-LINE med 17, do you have any manual or diagram?

A: If your car is OBD diagnostic socket, just plug the OBD cable into the car; if your car is not OBD diagnostic socket, after you select the ECU type in the KESS V2 software, the diagram will appear and show you how to connect (see the following pictures)



ECU BOSCH EDC17 for FORD vehicles

WARNING: to use this protocol of communication you have to remove and open the ECU. It is a risky operation, to be done with great care and caution to avoid damaging the ECU beyond repair.

After opening the ECU and before proceeding with reading and/or programming, you are strongly advised to reconnect the unit to the vehicle and start the engine, to make sure it still works.

In no event shall we be liable for any damage caused to the ECU during the opening. BY USING THIS PROTOCOL, YOU CONFIRM YOUR FULL AND UNCONDITIONAL ACCEPTANCE OF THIS TERMS AND CONDITIONS, YOU RELIEVE US FROM ANY RESPONSABILITY AND YOU RENOUNCE TO ALL RIGHTS TO CLAIM ANY COMPENSATION.

Thanks to the Bootloader Tricore Adapter you can backup, restore, read and write BOSCH EDC17 and MEDV ECUs equipped with microprocessors Tricore TC17xx.



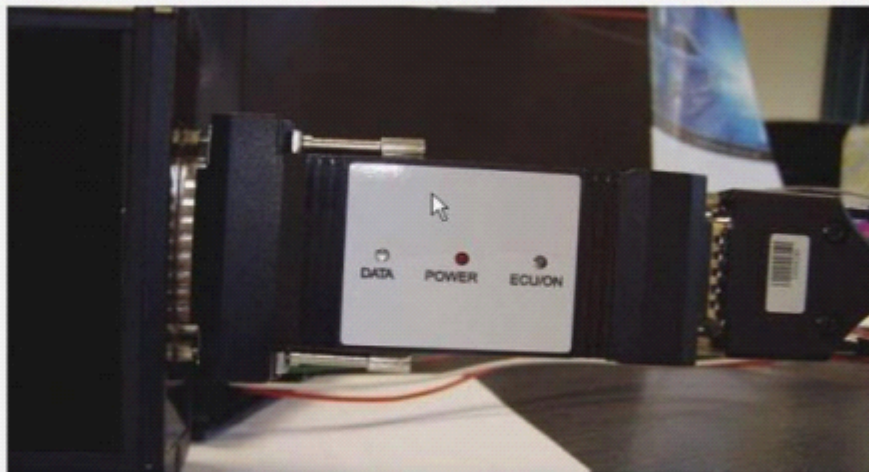
KES

Back

OK

ALIENTECH
ELECTRONIC PERFORMANCE

Thanks to the Bootloader Tricore Adapter you can backup, restore, read and write BOSCH EDC17 and MEDV ECUs equipped with microprocessors Tricore TC17xx.



KES

Back

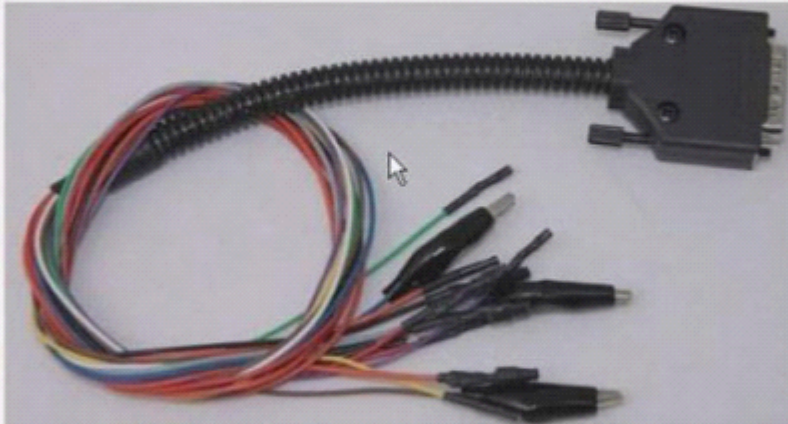
OK

ALIENTECH
ELECTRONIC PERFORMANCE

Bootloader Tricore Adapter 14P600BTLR

On this type of ECU you can make reading and programming in two different ways:

- direct connection to the ECU using the cable 14P600KT02
- using the positioning frame 14P800ADB0, the flat cable 14P600KT03 and the special board 14P600KT04



Cable 14P600KT02 for direct connection

KESS

Back

OK

ALIEN TECH
ELECTRONIC PERFORMANCE



Positioning frame 14P800ADB0, flat cable 14P600KT03 and special board 14P600KT04

Before programming, **always** make a backup copy of the ECU.

1. Remove the ECU from the vehicle;
2. Open the ECU, taking care not to damage the parts on the inside;
3. **Reconnect the ECU to the vehicle and start the engine, in order to make sure that it is still working and has not been damaged during the opening;**
4. Remove again the ECU from the vehicle;
5. Select the right plug-in;
6. Make the backup of the data on the ECU, selecting **Tool** from the following menu:

ID
READING
WRITING
TOOL

Select

Back

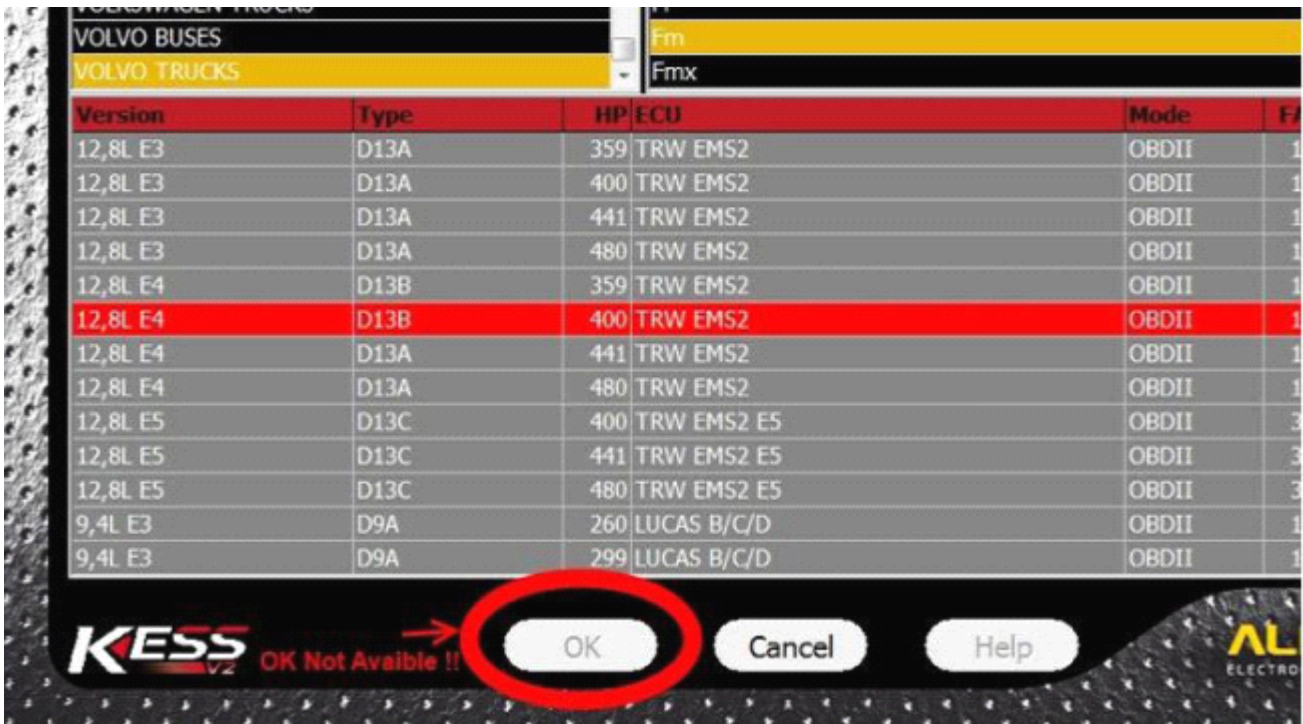
KESS

Back

OK

ALIEN TECH
ELECTRONIC PERFORMANCE

Q: when I use KESS V2 and choose the version 12, 8L E4, type D13B, HP 400, ECU TRW EMS2, “OK” button is not available.



A: “OK” button not available means KESS V2 doesn’t support this car model. Besides, KESS V2 only covers car models, not trucks.

Q: After I open “KSuite.exe” and ready to run KESS V2, all of the following icons are gray and locked, I can't go on.

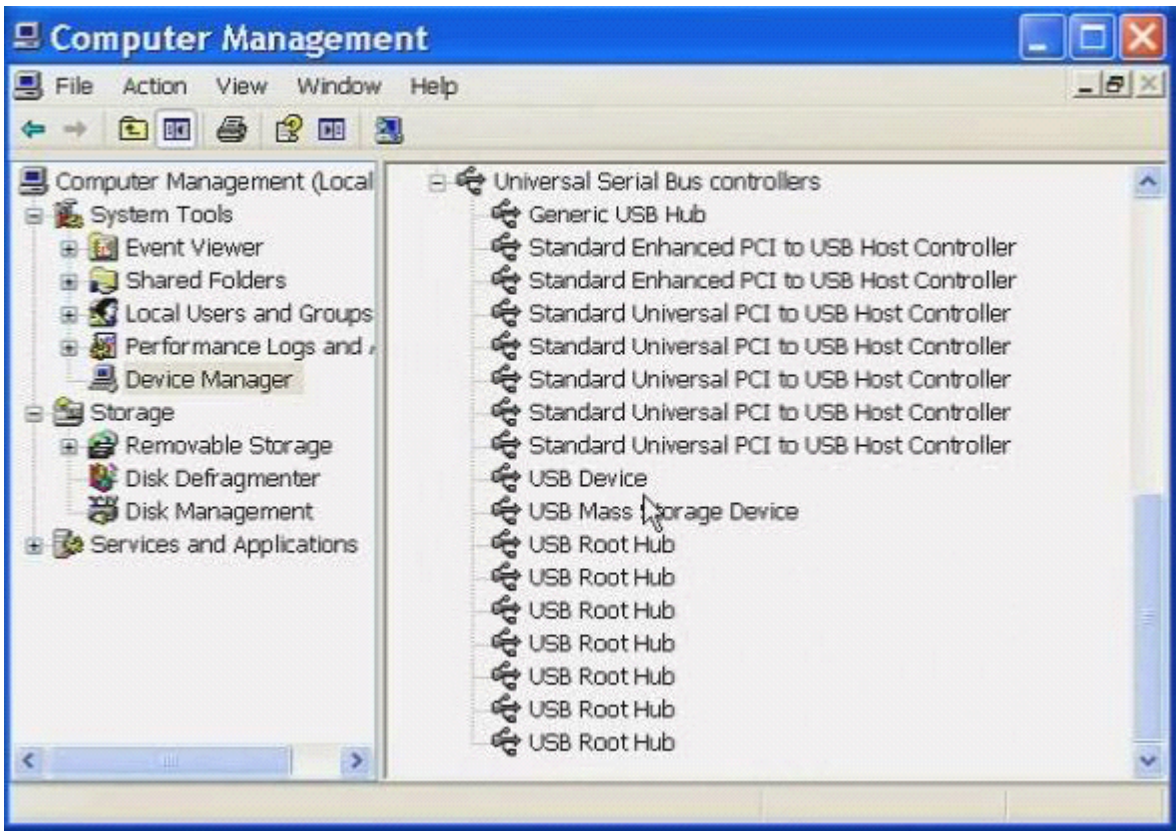


A: it means it doesn't Found New Hardware, back to check whether the driver is installed successfully.
Advice you contact us to send you KESS V2 video tutorial.

Q: KESS V2 has error "Connections not established"



A: The driver is not successfully installed, go to "Device Manager" to check whether it has KESS V2 driver?
Advice you contact us to send you KESS V2 video tutorial.



Q: What's the difference between KTAG and KESS V2?

A: KTAG and KESS V2 share the same software, but KESS V2 has OBD function (means KESS V2 program ECU by OBD diagnostic cable) while KTAG doesn't have.

Q: What's the difference between KESS V2 and FGTech Galletto 2?

A: Both KESS V2 and FGTech Galletto 2 work with a number of cars, but they program ECU via different ways. FGtech program ECU by BDM (in another word, FGTECH has BDM function), but KESS V2 doesn't support, Kess V2 has Anti-mediation lock module, it is better in working with new and encrypted cars than FGTech Galletto 2.

About KESS V2 basic information: Language , version and OS requirement

Q: Besides French, what other language KESS V2 is available?

A: KESS V2 language available: English, German, Spanish, Italian, Portuguese and French.



Q: Is yours KESS V2 master or slave? If slave, how it works? Do file have to decrypted/ crypted etc when reading and writing or how it's different than master one?

I know yet, if master, no any decrypt etc.

A: Our KESS V2 is Master.

Q: Both kess v2 and Ktag only work with Windows XP system?

A: Windows 7 is Okay too, but better use Windows 7 Professional. If Windows 7 is not Okay, use Windows XP professional.

About KESS V2 function

Q: Kess V2 describes "9. Full integration with ECM Titanium" but I didn't find it has ECM Titanium.

A: You misunderstood, this sentence means KESS V2 can work with ECM Titanium, not means KESS V2 contains ECM Titanium. KESS V2 is an ECU programming tool, and ECM Titanium is a set of programming software for adjusting power.

Q: Does KESS V2 support remapping the ECU? Or it can only read and write ECU?

A: KESS V2 doesn't support remapping the ECU.