

**KWP2000 chip tuning**

---

**KWP2000 OBDII chip tuning**

Using this interface you can change maps on 44 types of ECUs. You can read original maps, edit, modify (with other software, not included) and load it again into ECU of Your car. This interface read and write all content of the flash memory via diagnostic socket (OBD2) of the car or directly attached to the ECU plug. Include Pocet PC Software and Dashboard Corection Software

**LIST OF SUPPORTED CARS:**

**Fiat/Alfa:**

Alfa Romeo 145 1.4 Bosch M1.5.5

Alfa Romeo 145 1.6 Bosch M1.5.5

Alfa Romeo 146 1.4 Bosch M1.5.5

Alfa Romeo 146 1.6 Bosch M1.5.5

Alfa Romeo 146 1.8 Bosch M1.5.5

Alfa Romeo 146 2.0 Bosch M1.5.5

Alfa Romeo 156 1.6 Bosch M1.5.5

Alfa Romeo 156 1.8 Bosch M1.5.5

Alfa Romeo 156 2.0 Bosch M1.5.5

Alfa Romeo 166 2.0 Bosch M1.5.5

Alfa Romeo 166 2.0 Bosch M1.5.5

Alfa Romeo GTV 1.8 TS 16V Bosch M1.5.5

Alfa Romeo GTV 2.0 TS 16V Bosch M1.5.5

Alfa Romeo GTV 3.0 TS 16V Bosch M1.5.5

Alfa Romeo Spider 1.8 TS Bosch M1.5.5

Alfa Romeo Spider 2.0 TS 16V Bosch M1.5.5

Alfa Romeo Spider 3.0 TS 16V Bosch M1.5.5

Fiat Bravo/Brava 1.2 Bosch M1.5.5

**Fiat/Alfa/Lancia:**

Alfa Romeo 145 1.9 JTD Bosch EDC15C5

Alfa Romeo 146 1.9 JTD Bosch EDC15C5

**KWP2000 chip tuning**

---

Alfa Romeo 156 1.9 JTD Bosch EDC15C5

Alfa Romeo 156 2.4 JTD Bosch EDC15C5

Alfa Romeo 166 2.4 JTD Bosch EDC15C5

Fiat Bravo/Brava 1.9 JTD Bosch EDC15C5

Fiat Multipla 1.9 JTD Bosch EDC15C5

Fiat Marea 1.9 JTD Bosch EDC15C5

Fiat Marea 2.4 JTD Bosch EDC15C5

Lancia K 2.4 JTD Bosch EDC15C5

Lancia Lybra 1.9 JTD Bosch EDC15C5

Lancia Lybra 2.4 JTD Bosch EDC15C5

Lancia Z 2.0 JTD Bosch EDC15C5

**Smart**

MCC Smart Smart 0.7 Bosch MEG1.1

**Fiat:**

Fiat Punto 1.9 JTD Bosch EDC15C6

Fiat Punto 1.9 JTD Bosch EDC15C7

**Fiat/Alfa/Lancia:**

Alfa Romeo 147 1.9 JTD 16V Bosch EDC15C7

Alfa Romeo 147 1.9 JTD 8V Bosch EDC15C7

Alfa Romeo 156 1.9 JTD Bosch EDC15C7

Alfa Romeo 156 2.4 JTD Bosch EDC15C7

Alfa Romeo 166 2.4 JTD Bosch EDC15C7

Fiat Bravo/Brava 1.9 JTD Bosch EDC15C7

Fiat Doblo 1.9 JTD Bosch EDC15C7

Fiat Ducato 2.0 JTD Bosch EDC15C7

Fiat Ducato 2.3 JTD Bosch EDC15C7

Fiat Ducato 2.8 JTD Bosch EDC15C7

Fiat Marea 1.9 JTD Bosch EDC15C7

Fiat Marea 2.4 JTD Bosch EDC15C7

**KWP2000 chip tuning**

---

Fiat Multipla 1.9 JTD Bosch EDC15C7

Fiat Scudo 2.0 JTD Bosch EDC15C7

Fiat Stilo 1.9 JTD Bosch EDC15C7

Lancia Lybra 1.9 JTD Bosch EDC15C7

Lancia Lybra 2.4 JTD Bosch EDC15C7

Lancia Thesis 2.4 JTD Bosch EDC15C7

**Fiat/Lancia:**

Fiat Punto 1.2 Bosch ME7.2.1 Euro2

Lancia Y 1.2 Bosch ME7.2.1 Euro2

**Fiat/Lancia:**

Fiat Punto 1.2 Bosch ME7.H3

Fiat Stilo 2.4 Bosch ME7.3.1

Lancia Y 1.2 Bosch ME7.H3

**Citroen/Pergeot/Fiat/Lancia**

Citroen Berlingo 2.0 HDI Bosch EDC15C2

Citroen C5 2.0 HDI Bosch EDC15C2

Citroen C5 2.2 HDI Bosch EDC15C2

Citroen C8 2.0 HDI Bosch EDC15C2

Citroen Evasion 2.0 HDI Bosch EDC15C2

Citroen Jumper 2.0 HDI Bosch EDC15C2

Citroen Jumper 2.2 HDI Bosch EDC15C2

Citroen Jumper 2.8 HDI Bosch EDC15C7

Citroen Jumpy 2.0 HDI Bosch EDC15C2

Citroen Picasso 2.0 HDI Bosch EDC15C2

Citroen Synergie 2.0 HDI Bosch EDC15C2

Citroen Xantia 2.0 HDI Bosch EDC15C2

Citroen Xsara 2.0 HDI Bosch EDC15C2

Citroen Xsara Picasso 2.0 HDI Bosch EDC15C2

Fiat Ulysse 2.0 JTD 16V Bosch EDC15C2

**KWP2000 chip tuning**

---

Fiat Ulysse 2.2 JTD 16V Bosch EDC15C2

Lancia Phedra 2.0 JTD Bosch EDC15C2

Lancia Phedra 2.2 JTD Bosch EDC15C2

Peugeot 206 2.0 HDI Bosch EDC15C2

Peugeot 306 2.0 HDI Bosch EDC15C2

Peugeot 307 2.0 HDI 110PS Bosch EDC15C2

Peugeot 406 2.0 HDI Bosch EDC15C2

Peugeot 406 2.2 HDI Bosch EDC15C2

Peugeot 607 2.0 HDI Bosch EDC15C2

Peugeot 607 2.2 HDI Bosch EDC15C2

Peugeot 807 2.0 HDI Bosch EDC15C2

Peugeot 807 2.2 HDI Bosch EDC15C2

Peugeot Boxer 2.0 HDI Bosch EDC15C2

Peugeot Expert 2.0 HDI Bosch EDC15C2

Peugeot Partner 2.0 HDI Bosch EDC15C2

**VAG**

Audi A3 1.9 TDi VP37 Bosch EDC15V

Audi A3 1.9 TDi VP37 Bosch EDC15VM

Audi A3 1.9 TDi VP37 Bosch EDC15VM-1M

Audi A4 1.9 TDi VP37 Bosch EDC15V

Audi A4 1.9 TDi VP37 Bosch EDC15VM

Audi A4 1.9 TDi VP37 Bosch EDC15VM-1M

Audi A6 1.9 TDi PD Bosch EDC15P

Audi A6 1.9 TDi VP37 Bosch EDC15V

Audi A6 1.9 TDi VP37 Bosch EDC15VM

Audi A6 1.9 TDi VP37 Bosch EDC15VM-1M

Seat Alhambra 1.9 TDI VP37 Bosch EDC15V

Seat Alhambra 1.9 TDI VP37 Bosch EDC15VM

Seat Alhambra 1.9 TDI VP37 Bosch EDC15VM-1M

**KWP2000 chip tuning**

---

Seat Cordoba 1.9 TDI VP37 Bosch EDC15V

Seat Cordoba 1.9 TDI VP37 Bosch EDC15VM

Seat Cordoba 1.9 TDI VP37 Bosch EDC15VM-1M

Seat Ibiza 1.9 TDI VP37 Bosch EDC15V

Seat Ibiza 1.9 TDI VP37 Bosch EDC15VM

Seat Ibiza 1.9 TDI VP37 Bosch EDC15VM-1M

Seat Leon 1.9 TDI VP37 Bosch EDC15V

Seat Leon 1.9 TDI VP37 Bosch EDC15VM

Seat Leon 1.9 TDI VP37 Bosch EDC15VM-1M

Seat Toledo 1.9 TDI VP37 Bosch EDC15V

Seat Toledo 1.9 TDI VP37 Bosch EDC15VM

Seat Toledo 1.9 TDI VP37 Bosch EDC15VM-1M

Skoda Fabia 1.9 TDI VP37 Bosch EDC15V

Skoda Fabia 1.9 TDI VP37 Bosch EDC15VM

Skoda Fabia 1.9 TDI VP37 Bosch EDC15VM-1M

Skoda Octavia 1.9 TDI VP37 Bosch EDC15V

Skoda Octavia 1.9 TDI VP37 Bosch EDC15VM

Skoda Octavia 1.9 TDI VP37 Bosch EDC15VM-1M

VW Bora 1.9 TDI VP37 Bosch EDC15V

VW Bora 1.9 TDI VP37 Bosch EDC15VM

VW Bora 1.9 TDI VP37 Bosch EDC15VM-1M

VW Golf 4 1.9 TDI VP37 Bosch EDC15V

VW Golf 4 1.9 TDI VP37 Bosch EDC15VM

VW Golf 4 1.9 TDI VP37 Bosch EDC15VM-1M

VW New Beetle 1.9 TDI VP37 Bosch EDC15V

VW New Beetle 1.9 TDI VP37 Bosch EDC15VM

VW New Beetle 1.9 TDI VP37 Bosch EDC15VM-1M

VW Passat 1.9 TDI VP37 Bosch EDC15V

VW Passat 1.9 TDI VP37 Bosch EDC15VM

**KWP2000 chip tuning**

---

VW Passat 1.9 TDI VP37 Bosch EDC15VM-1M

VW Sharan 1.9 TDI VP37 Bosch EDC15V

VW Sharan 1.9 TDI VP37 Bosch EDC15VM

VW Sharan 1.9 TDI VP37 Bosch EDC15VM-1M

**Alfa/Lancia**

Alfa Romeo 147 1.6 Bosch ME7.3.1

Alfa Romeo 147 2.0 TS Bosch ME7.3.1

Alfa Romeo 156 1.6 Bosch ME7.3.1

Alfa Romeo 156 1.8 Bosch ME7.3.1

Alfa Romeo 156 2.0 Bosch ME7.3.1

Alfa Romeo 166 2.0 Bosch ME7.3.1

Alfa Romeo 166 2.5 Bosch ME7.3.1

Alfa Romeo 166 3.0 Bosch ME7.3.1

Alfa Romeo GTV 2.0 TS 16V Bosch ME7.3.1

Alfa Romeo GTV 3.0 TS 16V Bosch ME7.3.1

Alfa Romeo Spider 2.0 TS 16V Bosch ME7.3.1

Alfa Romeo Spider 3.0 TS 16V Bosch ME7.3.1

Lancia Lybra 2.0 Bosch ME7.3.1

Lancia Thesis 2.0 Turbo Bosch ME7.3.1

**Chrysler**

Chrysler Grand Cherokee 2.7 CRD Bosch EDC15C2

Chrysler Jeep Cherokee 2.5 CRD Bosch EDC15C2

Chrysler Jeep Cherokee 2.8 CRD Bosch EDC15C2

Chrysler PT Cruiser 2.2 CRD Bosch EDC15C2

Chrysler Voyager 2.5 CRD Bosch EDC15C2

**Mercedes**

Mercedes A-Klasse 1.7 CDI Bosch EDC15C6

Mercedes C-Klasse (W201) 2.2 CDI Bosch EDC15C6

Mercedes C-Klasse (W201) 2.7 CDI Bosch EDC15C6

**KWP2000 chip tuning**

---

Mercedes C-Klasse (W203) 2.0 CDI Bosch EDC15C6

Mercedes C-Klasse (W203) 2.2 CDI Bosch EDC15C5

Mercedes C-Klasse (W203) 2.2 CDI Bosch EDC15C6

Mercedes C-Klasse (W203) 2.7 CDI Bosch EDC15C6

Mercedes C-Klasse (W203) 3.2 CDI Bosch EDC15C6

Mercedes E-Klasse (W210) 2.0 CDI Bosch EDC15C6

Mercedes E-Klasse (W210) 2.2 CDI Bosch EDC15C6

Mercedes E-Klasse (W210) 2.7 CDI Bosch EDC15C6

Mercedes E-Klasse (W210) 3.2 CDI Bosch EDC15C6

Mercedes G-Klasse 2.7 CDI Bosch EDC15C6

Mercedes G-Klasse 4.0 CDI Bosch EDC15C6

Mercedes M-Klasse 2.7 CDI Bosch EDC15C6

Mercedes ML-Klasse 2.7 CDI Bosch EDC15C6

Mercedes ML-Klasse 4.0 CDI Bosch EDC15C6

Mercedes S-Klasse (W280) 3.2 CDI Bosch EDC15C6

Mercedes S-Klasse (W280) 4.0 CDI Bosch EDC15C6

Mercedes V-Klasse 2.0 CDI Bosch EDC15C6

Mercedes V-Klasse 2.2 CDI Bosch EDC15C6

Mercedes Vito 2.2 CDI Bosch EDC15C6

**Mercedes**

Mercedes A-Klasse 1.7 CDI Bosch EDC15C5

Mercedes C-Klasse (W201) 2.2 CDI Bosch EDC15C5

Mercedes M-Klasse 3.2 CDI Bosch EDC15C

Mercedes Sprinter 2.2 CDI Bosch EDC15C

Mercedes V-Klasse 2.2 CDI Bosch EDC15C5

Mercedes Vito 2.2 CDI Bosch EDC15C5

**Smart**

MCC Smart CDI 0.9 CDI EDG15C5

**VAG**

**KWP2000 chip tuning**

---

Audi A2 1.4 TDi PD Bosch EDC15P

Audi A3 1.9 TDi PD Bosch EDC15P

Audi A4 1.9 TDi PD Bosch EDC15P

Seat Alhambra 1.9 TDI PD Bosch EDC15P

Seat Cordoba 1.9 TDI PD Bosch EDC15P

Seat Ibiza 1.9 TDI PD Bosch EDC15P

Seat Leon 1.9 TDI PD Bosch EDC15P

Seat Toledo 1.9 TDI PD Bosch EDC15P

Skoda Fabia 1.9 TDI PD Bosch EDC15P

Skoda Octavia 1.9 TDI PD Bosch EDC15P

VW Bora 1.9 TDI PD Bosch EDC15P

VW Golf 4 1.9 TDI PD Bosch EDC15P

VW Lupo 1.2 TDI PD Bosch EDC15P

VW Lupo 1.4 TDI PD Bosch EDC15P

VW New Beetle 1.9 TDI PD Bosch EDC15P

VW Passat 1.9 TDI PD Bosch EDC15P

VW Polo 1.4 TDI PD Bosch EDC15P

VW Polo 1.9 TDI PD Bosch EDC15P

VW Sharan 1.9 TDI PD Bosch EDC15P

**VAG**

Audi A4 2.5 TDi VP44 Bosch EDC15P

Audi A6 2.5 TDi VP44 Bosch EDC15P

Audi A8 2.5 TDi VP44 Bosch EDC15P

Audi Allroad Quattro 2.5 TDi V6 Bosch EDC15P

VW Passat 2.5 TDI VP37 Bosch EDC15P

VW T4 Bus 2.5 TDI VP44 Bosch EDC15P

**BMW**

BMW Serie 3 (E46) 2.0 D (318d) Bosch DDE3.0

BMW Serie 5 (E39) 2.0 D Bosch EDC15



**Audi/Vw**

Audi/Volkswagen 1.8T Bosch ME7.5

**Opel/Renault**

Opel Vivaro 1.9 16V DI Bosch EDC15C2

Renault Espace 1.9 dCi Bosch EDC15C2

Renault Espace 2.2 dCi Bosch EDC15C2

Renault Kangoo 1.9 dCi Bosch EDC15C2

Renault Laguna 1.9 dCi Bosch EDC15C2

Renault Megane 1.9 dCi Bosch EDC15C2

Renault Scenic 1.9 dCi Bosch EDC15C2

Renault Scenic 1.9 dTi Bosch EDC15C2

Renault Trafic 1.9 dCi Bosch EDC15C2

**Opel**

Opel Astra F (4) 1.7 16V DTI Bosch EDC15M

Opel Astra F (4) 2.0 16V DI Bosch EDC15M

Opel Astra F (4) 2.2 16V DI Bosch EDC15M

Opel Astra G 1.7 16V DI Bosch EDC15M

Opel Astra G 2.0 16V DI Bosch EDC15M

Opel Frontera 2.2 DTI Bosch EDC15M

Opel Vectra B 1.7 16V DI Bosch EDC15M

Opel Vectra B 2.0 16V DI Bosch EDC15M

Opel Vectra C 2.0 16V DI Bosch EDC15M

Opel Vectra C 2.0 16V DTI Bosch EDC15M

Opel Zafira 2.0 16V DI Bosch EDC15M

**Ford**

Ford Galaxy 1.9 TDi PD Bosch EDC15P

**Nissan**

Nissan Almera Tino 2.0 Bosch EDC15C2

Nissan X-Trail 2.2 Bosch EDC15C2

**Fiat/Alfa/Lancia**

Alfa Romeo 156 2.0 Bosch ME3.1  
Alfa Romeo 166 2.5 V6 24V Bosch ME3.1  
Alfa Romeo GTV 3.0 V6 24V Bosch ME3.1  
Alfa Romeo Spider 3.0 V6 24V Bosch ME3.1  
Fiat Bravo/Brava 2.0 Bosch ME7.3.1  
Fiat Bravo/Brava 2.0 20V Bosch ME3.1  
Fiat Coupe 2.0 20V Bosch ME3.1  
Fiat Marea 2.4 MDI 20V Bosch ME3.1  
Lancia Lybra 2.0 i 20V Bosch ME3.1

**Alfa Romeo**

Alfa Romeo 156 2.5 Bosch ME2.1  
Alfa Romeo 166 2.0 V6 Turbo Bosch ME2.1  
Alfa Romeo 166 2.5 V6 24V Bosch ME2.1  
Alfa Romeo 166 3.0 V6 24V Bosch ME2.1

**BMW**

BMW Serie 3 (E36) 2.0 i Siemens MS41  
BMW Serie 3 (E36) 2.5 i Siemens MS41  
BMW Serie 3 (E36) 2.8 i Siemens MS41  
BMW Serie 5 (E39) 2.0 i Siemens MS41  
BMW Serie 5 (E39) 2.5 i Siemens MS41  
BMW Serie 7 (E38) 2.8 i Siemens MS41  
BMW Z3 Roadster 2.0 Siemens MS41  
BMW Z3 Roadster 2.8 Siemens MS41

**Opel**

Opel Coupe Turbo --- ME1.5.5

**Opel**

Opel Astra F (4) 1.8 16V Siemens Simtec70  
Opel Astra F (4) 2.0 16V Siemens Simtec70

**KWP2000 chip tuning**

---

Opel Astra G 1.8 16V Siemens Simtec70

Opel Astra G 2.0 16V Siemens Simtec70

Opel Omega B 2.0 16V Siemens Simtec70

Opel Vectra B 1.8 16V Siemens Simtec70

Opel Vectra B 2.0 16V Siemens Simtec70

Opel Vectra C 1.8 16V Siemens Simtec70

Opel Vectra C 2.0 16V Siemens Simtec70

Opel Zafira 1.8 16V Siemens Simtec70

Opel Zafira 2.0 16V Siemens Simtec70

**Opel**

Opel Astra F (4) 1.7 16V DTI Delco Y17DT

Opel Corsa B 1.7 16V Delco Y17DT

Opel Zafira 1.7 16V Delco Y17DT

**Ferrari**

Ferrari Modena 3.6 Bosch ME7.3H4

**Rover**

Rover 75 2.0 CDT Bosch DDE4.0

Rover 75 Tourer 2.0 CDT Bosch DDE4.0

**Opel**

Opel Astra G 1.2 16V Bosch M1.5.5

Opel Corsa B 1.0 12V Bosch M1.5.5

Opel Corsa B 1.2 16V Bosch M1.5.5

Opel Corsa C 1.0 12V Bosch M1.5.5

Opel Corsa C 1.2 16V Bosch M1.5.5

**Opel**

Opel Astra F (4) 1.8 16V Siemens Simtec90

Opel Astra F (4) 2.0 16V Siemens Simtec90

Opel Astra G 1.8 16V Siemens Simtec90

Opel Astra G 2.0 16V Siemens Simtec90

**KWP2000 chip tuning**

---

Opel Omega B 2.0 16V Siemens Simtec90

Opel Vectra B 1.8 16V Siemens Simtec90

Opel Vectra B 2.0 16V Siemens Simtec90

Opel Vectra C 1.8 16V Siemens Simtec90

Opel Vectra C 2.0 16V Siemens Simtec90

Opel Zafira 1.8 16V Siemens Simtec90

Opel Zafira 2.0 16V Siemens Simtec90

**Hyundai/Kia**

Hyundai Accent 1.5 CRDI Bosch EDC15C2

Hyundai Elantra 2.0 CRDI Bosch EDC15C2

Hyundai Matrix 1.5 CRDI Bosch EDC15C2

Hyundai Santa Fe 2.0 CRDI Bosch EDC15C2

Hyundai Trajet 2.0 CRDI Bosch EDC15C2

Kia Carens 2.0 CRDi 16V Bosch EDC15C2

Kia Sorento 2.5 CRDi Bosch EDC15C2

**Volvo**

Volvo V40 2.0 TDI Bosch EDC15C3

**BMW/Rover**

BMW Serie 3 (E46) 3.0 D Bosch DDE4.0

BMW Serie 5 (E39) 2.5 D Bosch DDE4.0

BMW Serie 5 (E39) 3.0 D Bosch DDE4.0

BMW Serie 7 (E38) 3.0 D Bosch DDE4.0

BMW Serie X5 (E53) 3.0 D Bosch DDE4.0

Land Rover Freelander 2.0 CDT Bosch DDE4.0

**Mini**

Mini Cooper 2.0 D Bosch EDC15C2 DDE

**Opel**

Opel Astra F (4) 1.4 16V Delco

Opel Astra F (4) 1.6 16V Delco

**KWP2000 chip tuning**

---

Opel Vectra B 1.4 16V Delco

Opel Vectra B 1.6 16V Delco

**BMW**

BMW Serie 3 (E36) 1.8 i Bosch ME5.2.1b

BMW Z3 Roadster 1.9 Bosch ME5.2.1b

**Izuzu**

Izuzu 2.0 16V DI Bosch EDC15M

**BMW**

BMW Serie 3 (E36) 2.0i Siemens Ms43

BMW Serie 3 (E36) 2.5i Siemens Ms43

BMW Serie 3 (E36) 2.3i Siemens Ms43

BMW Serie 3 (E36) 2.8i Siemens Ms43

BMW Serie 3 (E36) 3.0i Siemens Ms43

BMW Serie 3 (E36) 3.2i Siemens Ms43

BMW Serie 5 (E46) 2.0i Siemens Ms43

BMW Serie 5 (E46) 2.5i Siemens Ms43

BMW Serie 5 (E46) 2.3i Siemens Ms43

BMW Serie 5 (E46) 2.8i Siemens Ms43

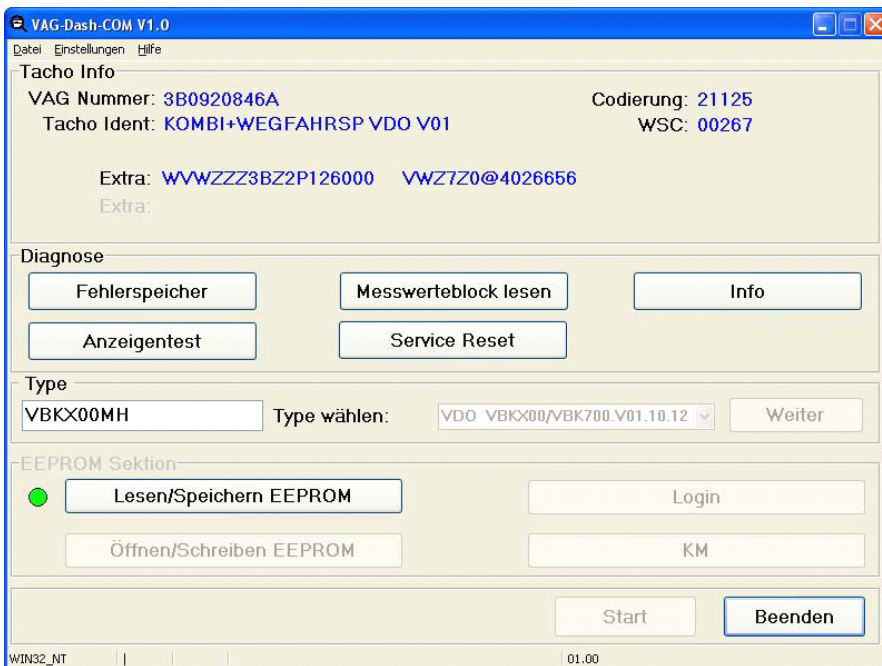
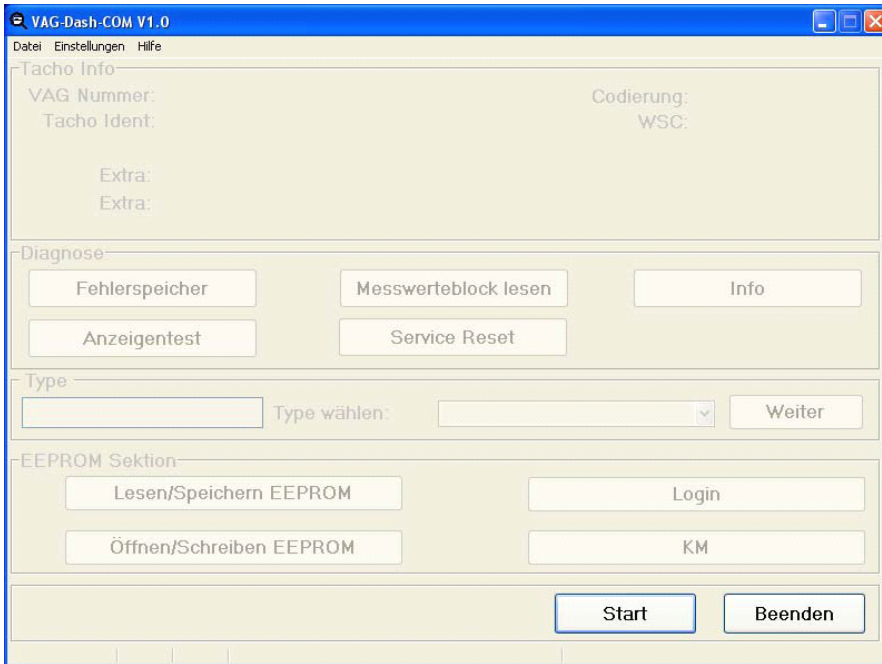
BMW Serie 5 (E46) 3.0i Siemens Ms43

BMW Serie 5 (E46) 3.2i Siemens Ms43

Audi/Volkswagen 1.9 (2,5) EC15VM+ 29F800

**KWP2000 chip tuning**

**software screenshots:**



**KWP2000 chip tuning**

Messwerteblock lesen		
Motorstart erlaubt	NEIN	Schlüssel oder Motorsteuergerät nicht oder falsch angelemt
Motorsteuergerät antwortet	NEIN	Motorsteuergerätenlernung derzeit nicht möglich
Schlüssel OK	NEIN	Anlernung eines Transponders dieses Types nicht möglich
Anzahl angelemteter Schlüssel	2	Maximal 8 Schlüssel möglich
Transpondercode	NEIN	Transpondercode entspricht nicht dem Gespeicherten
Transponder Status	OK	Transponder nicht gesperrt. Anlernung an diese WFS möglich
Festcode zulässig	NEIN	Festcode des Transponders ist nicht zulässig
WFS Status	6	WFS angelemt, Normalzustand
Tacho Sperrzeit	10	min. Zeigt an, wieviel Zeit vergehen muss, bevor ein weiterer Loginversuch gemacht werden kann
Motorsteuergerät Sperrzeit	0	min. Zeigt an, wieviel Zeit vergehen muss, bevor ein weiterer Kanal 50 Anlernungsversuch gemacht werden kann
Transponder Sperrzeit	0	min. Zeigt an, wieviel Zeit vergehen muss, bevor ein Transponder wieder erkannt wird. (Diese Funktion tritt nach 20 versuchten Starts mit nicht angelemteten Transpondern in Kraft)
<input type="button" value="Schliessen"/>		

VAG-Dash-COM V1.0		
Datei Einstellungen Hilfe		
Tacho Info		
VAG Nummer: 3B0920846A	Codierung: 21125	
Tacho Ident: KOMBI+WEGFAHRS SP VDO V01	WSC: 00267	
Extra: VWZZ3BZ2P126000	VWZ720@4026656	
Extra:		
Diagnose		
<input type="button" value="Fehlerspeicher"/>	<input type="button" value="Messwerteblock lesen"/>	<input type="button" value="Info"/>
<input type="button" value="Anzeigentest"/>	<input type="button" value="Service Reset"/>	
type	Type wählen:	<input type="button" value="Weiter"/>
VBKX00MH	VDO VBKX00/VBK700.V01.10.12	
EEPROM Sektion		
<input type="button" value="Lesen/Speichern EEPROM"/>	<input type="button" value="Login"/>	
<input type="button" value="Öffnen/Schreiben EEPROM"/>	<input type="button" value="KM"/>	
<input type="button" value="Start"/>		<input type="button" value="Beenden"/>
WIN32_NT		01.00

Package contains

- interface
- software include over 1000 Files for Tuning
- Driver USB for Windows 98/2000/XP
- cable USB

Notes:

**Sample price:** USD130/unit (FOB,Shenzhen)

**Order Price(MOQ 50pcs):** US\$ 95.00/pc (FOB,Shenzhen)

Production Lead Time: Within 25 days.

Sample Lead Time : Within 3 days upon receiving of charges. and freight cost for sending sample is at buyer's account

Email: sales02@careucar.com MSN: careucar@hotmail.com  
 Skype: careucar Yahoo: careucar@ymail.com