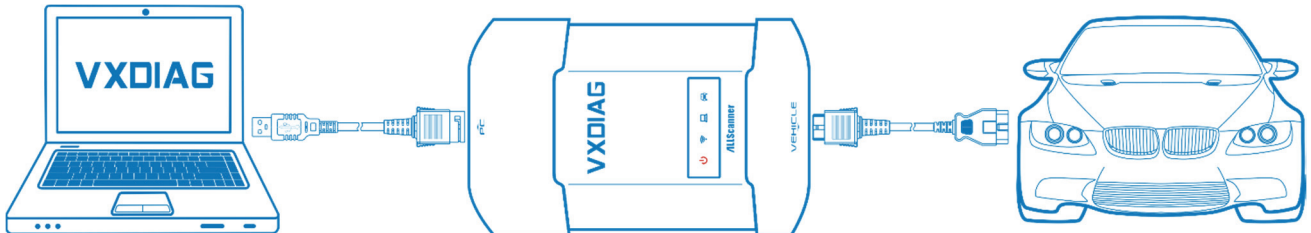


VXDIAG Introduction

Profile

Brand-new design VXDIAG, first integrated the three automotive industry standards, supports all major vehicle bus protocols, have strong compatibility and it is the best equipment to realize OEM level diagnostic functions.



Features

One Device to Support Multiple OEM Diagnostics

- Achieved the world's most of brand OEM level vehicle diagnostic, One device can replace mass expensive OEM tools
- Advanced Diagnostics fully consistent with the OEM tools, even beyond the OEM tools
- One-click to install OEM support driver and update online, Easy to use

Brand-New Design VXDIAG Hardware

- Equipped with high-speed processor VXDIAG is a high-performance Vehicle Network Interface
- Support 4 x CAN BUS and 2 x K-Line, multi-protocol high-speed and concurrent communication
- With the innovation design of OBD-II intelligent bus multiplex hardware, one device can support all standard and legacy vehicle bus protocols
- Supports 24V heavy-duty and diesel vehicles communication
- Rugged design can be used in a variety of harsh environments

Compatible with Three Automotive Industry Standard

- SAE-J2534-1/2 Pass-Thru Driver with EURO 5
- ISO-22900-1/2 MVCI with D-PDU Driver
- RP-1210A/B/C Heavy Duty VDA Driver

J2534 OEM Level ECU Reprogramming Function

- ECU software update and calibration
- ECU replace flash and programming

OEM Vehicle Diagnostic Function

#	OEM	Diagnostic Software	Compatible	Status
1	PASSTHRU	SAE-J2534-1/2 Pass-Thru	YES	Release

2	PORSCHE	Porsche PIWIS-II Tester	YES	Release
3	TOYOTA	TOYOTA Techstream TIS	YES	Release
4	HONDA	HONDA Diagnostic System HDS	YES	Release
5	SUBARU	SUBARU Select Monitor SSM	YES	Release
6	VOLVO	VOLVO VIDA	YES	Release
7	JLR	Jaguar & Land Rover SDD	YES	Release
8	CHRYSLER	Chrysler wiTECH Diagnostic	YES	Develop
9	GM	GM GDS2	YES	Develop
10	GM	GM Tech2Win	YES	Develop
11	FORD	FORD IDS	YES	Develop
12	MAZDA	MAZDA IDS	YES	Develop
13	KIA	KIA GDS	YES	Develop
14	HYUNDAI	HYUNDAI GDS	YES	Develop
15	MMC	Mitsubishi MUT-III	YES	Develop
16	NISSAN	* NISSAN Consult-III Plus	YES	Develop
17	SUZUKI	* Suzuki SDT-II	YES	Develop
18	VAG	* VW & AUDI ODIS	YES	Develop
19	BMW	* BMW RHEINGOLD ISTA/D	YES	Develop
20	BENZ	* BENZ XENTRY	YES	Develop
21	FERRARI	* Ferrari DEIS Tester	YES	Develop
22	MASERATI	* Maserati Diagnosi MDVCI	YES	Develop

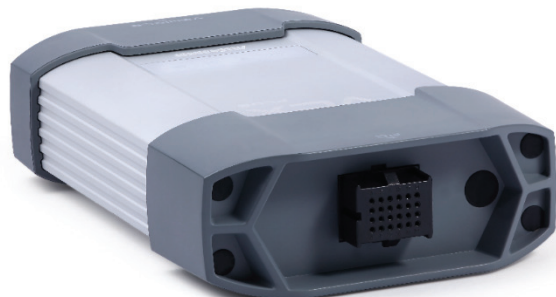
Vehicle Bus Protocols

Supported Automotive Protocols	<p>ISO-9141 K-Line ISO-14230 K-Line ISO-15765 CAN SAE-J1850-VPW (GM Class2) SAE-J1850-PWM (FORD SCP) ISO-11898-2 DWCAN ISO-11898-3 DWFTCAN SAE-J2411 Single Wire CAN (GMLAN) VAG TP16 CAN VAG TP20 CAN (SAE-J2819) VAG KW81 (SAE J2818) SAE-J2610 SCI (Chrysler) SAE-J1567 CCD BUS (Chrysler) SAE-J2740 GM ALDL SAE-J2809 (HONDA DIAG-H) NISSAN DDL UART with CLOCK BMW DS2 FORD UBP</p>
Supported Heavy-duty Protocols	<p>CAN125/CAN250/CAN500/CAN1000 SAE-J1939 CAN SAE-J1708/J1587 On RS485 CAT DATALINK (Caterpillar) ATA DATALINK (Caterpillar)</p>

Specifications

ITEM	DESCRIPTION
CPU	32bit 180MHz ARM CPU
Storage	1MByte
Cable Interface (PC)	USB2.0
Network Interface (Optional)	LAN 10/100M Ethernet
Wireless Interface (Optional)	WLAN 802.11 b/g/n Wi-Fi
Diagnostic Interface	24PIN highly reliable and easy-swap interface to OBD-II 16PIN
Indicator Light	4 LED indicator lights: Power, Wireless, Host and Vehicle.
Power	Vehicle power input: DC 9V-36V Compatible: 12V&24V
Power Dissipation	2W
Size	L x W x H = 175 x 110 x 45 (mm)
Weight	Device Weight: 0.6 Kg Package Weight: 2.3 Kg
Shell	Aluminum metal & Rugged plastic shell
Working Temperature	-20 ~ +70 °C
Storage Temperature	-40 ~ +85 °C
Standard Certification	Certification of Euro CE and US FCC

Product Overview



Device Operation Status (Red)



Wireless Network Status (Blue)



Host Communication Status(Blue)



Vehicle Communication Status(Blue)

Product Package



VCI Device



USB LAN cable



OBD-II diagnostic cable



Tool box and package

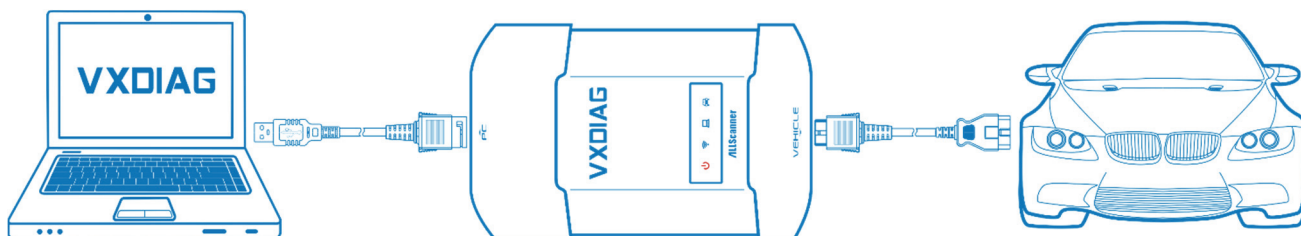


CD, User Manual, Fix Card

VXDIAG 产品介绍

产品概述

全新设计的 VXDIAG，首次将三大汽车工业标准集成于一个设备，支持所有主流车辆总线协议，具备强大的兼容性，VXDIAG 是实现众多原厂车辆诊断的最佳设备。



产品特性

一个设备支持众多原厂车辆诊断

- 实现世界主要品牌车型的原厂级诊断功能，一个设备可替代众多昂贵的 OEM 设备
- 各种高级诊断功能与原厂完全一致，性能甚至超出原厂
- 一键安装原厂支持驱动和在线升级，易于使用

全新设计的 VXDIAG 硬件

- 搭载高速处理器的 VXDIAG 是一个高性能的车辆网络接口
- 支持 4 路 CAN BUS，2 路 K-Line/L-Line，实现多协议高速并发通信
- 创新设计的 OBD-II 智能总线多路通信硬件，支持所有标准和原厂车辆总线协议
- 硬件支持 12V 和 24V 汽车通讯，可支持重型和柴油车辆诊断
- 坚固的设计能使用在各种恶劣环境

满足三大汽车工业标准设计

- SAE-J2534-1/2 Pass-Thru Driver with EURO 5
- ISO-22900-1/2 MVI with D-PDU Driver
- RP-1210A/B/C Heavy Duty VDA Driver

J2534 原厂级 ECU 编程功能

- ECU 软件升级和标定
- ECU 更换刷写和编程

原厂车辆诊断功能

#	OEM	Diagnostic Software	Compatible	Status
1	PASSTHRU	SAE-J2534-1/2 Pass-Thru	YES	Release
2	PORSCHE	Porsche PIWIS-II Tester	YES	Release
3	TOYOTA	TOYOTA Techstream TIS	YES	Release
4	HONDA	HONDA Diagnostic System HDS	YES	Release

5	SUBARU	SUBARU Select Monitor SSM	YES	Release
6	VOLVO	VOLVO VIDA	YES	Release
7	JLR	Jaguar & Land Rover SDD	YES	Release
8	CHRYSLER	Chrysler wiTECH Diagnostic	YES	Develop
9	GM	GM GDS2	YES	Develop
10	GM	GM Tech2Win	YES	Develop
11	FORD	FORD IDS	YES	Develop
12	MAZDA	MAZDA IDS	YES	Develop
13	KIA	KIA GDS	YES	Develop
14	HYUNDAI	HYUNDAI GDS	YES	Develop
15	MMC	Mitsubishi MUT-III	YES	Develop
16	NISSAN	* NISSAN Consult-III Plus	YES	Develop
17	SUZUKI	* Suzuki SDT-II	YES	Develop
18	VAG	* VW & AUDI ODIS	YES	Develop
19	BMW	* BMW RHEINGOLD ISTA/D	YES	Develop
20	BENZ	* BENZ XENTRY	YES	Develop
21	FERRARI	* Ferrari DEIS Tester	YES	Develop
22	MASERATI	* Maserati Diagnosi	YES	Develop

车辆总线协议

支持汽车诊断协议	<p>ISO-9141 K-Line</p> <p>ISO-14230 K-Line</p> <p>ISO-15765 CAN</p> <p>SAE-J1850-VPW (GM Class2)</p> <p>SAE-J1850-PWM (FORD SCP)</p> <p>ISO-11898-2 DWCAN</p> <p>ISO-11898-3 DWFTCAN</p> <p>SAE-J2411 Single Wire CAN (GMLAN)</p> <p>VAG TP16 CAN</p> <p>VAG TP20 CAN (SAE-J2819)</p> <p>VAG KW81 (SAE J2818)</p> <p>SAE-J2610 SCI (Chrysler)</p> <p>SAE-J1567 CCD BUS (Chrysler)</p> <p>SAE-J2740 GM ALDL</p> <p>SAE-J2809 (HONDA DIAG-H)</p> <p>NISSAN DDL UART with CLOCK</p> <p>BMW DS2</p> <p>FORD UBP</p>
支持重型车辆诊断协议	<p>CAN125/CAN250/CAN500/CAN1000</p> <p>SAE-J1939 CAN</p> <p>SAE-J1708/J1587 On RS485</p> <p>CAT DATALINK (Caterpillar)</p>

ATA DATALINK (Caterpillar)





技术规格

项目	描述
处理器	32bit 180MHz ARM 处理器
存储器	1MByte
有线接口 (PC)	USB2.0
网络接口 (PC) (选配)	LAN 10/100M 以太网
无线接口 (PC) (选配)	WLAN 802.11 b/g/n 无线网络
诊断接口 (车辆)	24PIN 高可靠易插拔接口转 OBD-II 16PIN
指示灯	4 个 LED 指示灯：电源，无线，通信和车辆。
供电	车辆电源输入：DC 9V-36V 兼容 12V 和 24V
功耗	2W
尺寸	L x W x H = 175 x 110 x 45 (mm)
重量	设备重量：0.6Kg 产品+工具箱+包装重量：2.3Kg
外壳	铝金属+加固型塑胶外壳
工作温度	-20 ~ +70 °C
储存温度	-40 ~ +85 °C
标准认证	符合欧盟 CE 和美国 FCC

产品预览



指示灯

	设备工作状态 (红色)
	无线网络状态 (蓝色)
	主机通信状态 (蓝色)
	车辆通信状态 (蓝色)

产品附件



设备



USB 通信电缆



OBD-II 诊断电缆



工具箱和包装



光盘, 用户手册, 保修卡